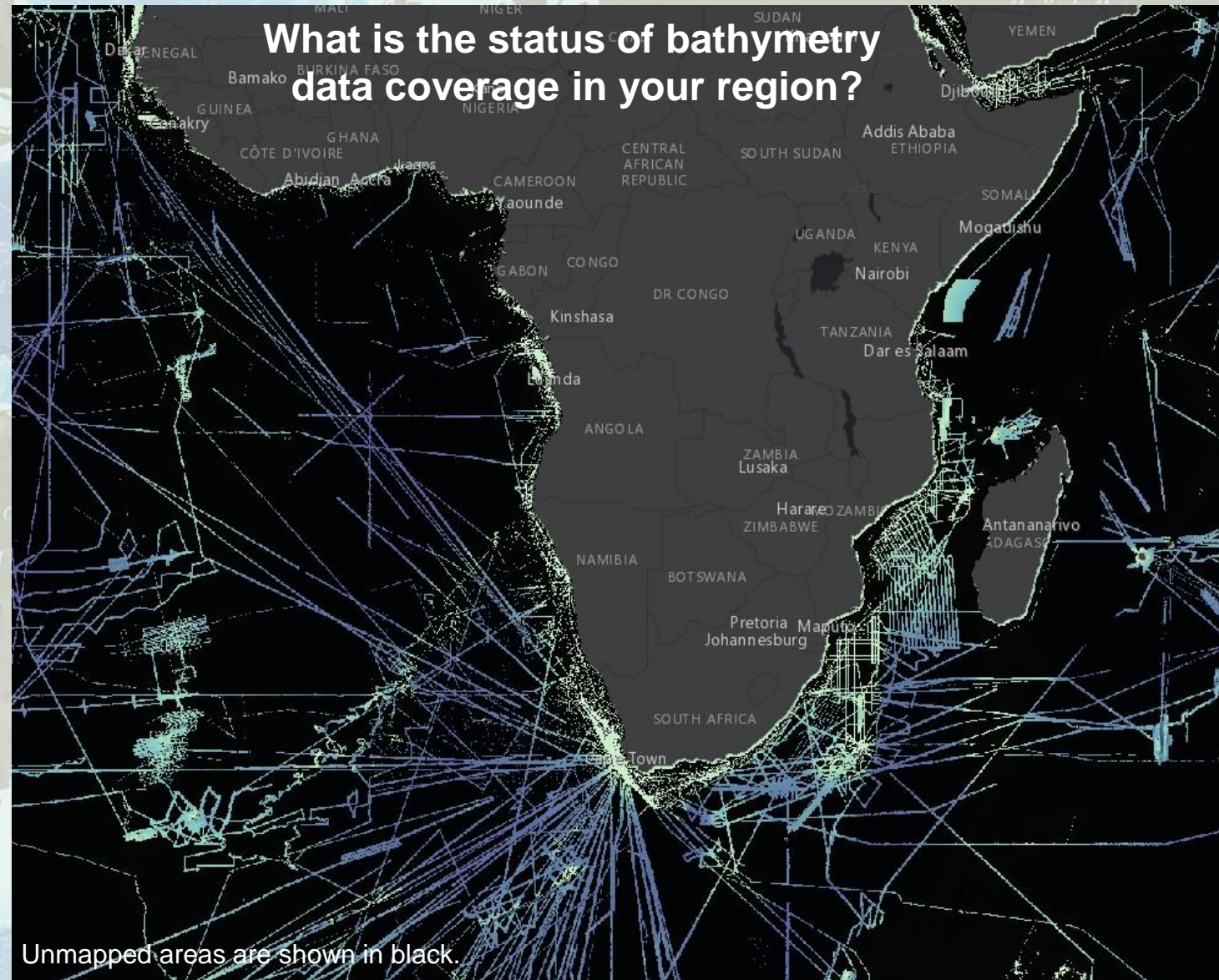


# The Nippon Foundation - GEBCO Seabed 2030 Project

Seabed 2030 is a collaborative project between the Nippon Foundation of Japan and the General Bathymetric Chart of the Oceans (GEBCO). It aims to bring together all available bathymetric data to produce the definitive map of the world ocean floor by 2030 and make it available to all.

The Atlantic and Indian Oceans Regional Center covers the area extending from 60°N to 50°S, from the Americas in the west to Australia in the East (to 140°E). Visit the Center's website to learn more about its engagement throughout the region.

Explore the current data coverage:  
<https://bit.ly/3xyoJzi>





## Why is Seabed 2030 important?

- 🎯 Bathymetry data is an essential ocean observation
- 🎯 Seabed mapping data has broad use and value
- 🎯 Ocean processes extend beyond territorial waters
- 🎯 Supports policy and decision making for sustainable use of the ocean
- 🎯 Completing a world ocean map can only be achieved through coordination and cooperation



## How can you advance seabed mapping in your region?

- 📁 Explore and use existing GEBCO Products in your region
- 📁 Share information about needs and challenges related to seabed mapping in your region
- 📁 Share data and/or information about existing data
- 📁 Connect with the seabed mapping community in your region
- 📁 Contact the Atlantic and Indian Ocean Regional Center for support and technical guidance

**Download the GEBCO Grid:**  
[www.gebco.net](http://www.gebco.net)

**Contribute data:**  
[www.seabed2030.org/contribute](http://www.seabed2030.org/contribute)

**Email us:**  
[atlantic-indian@seabed2030.org](mailto:atlantic-indian@seabed2030.org)

Visit [www.seabed2030.org](http://www.seabed2030.org) for more information