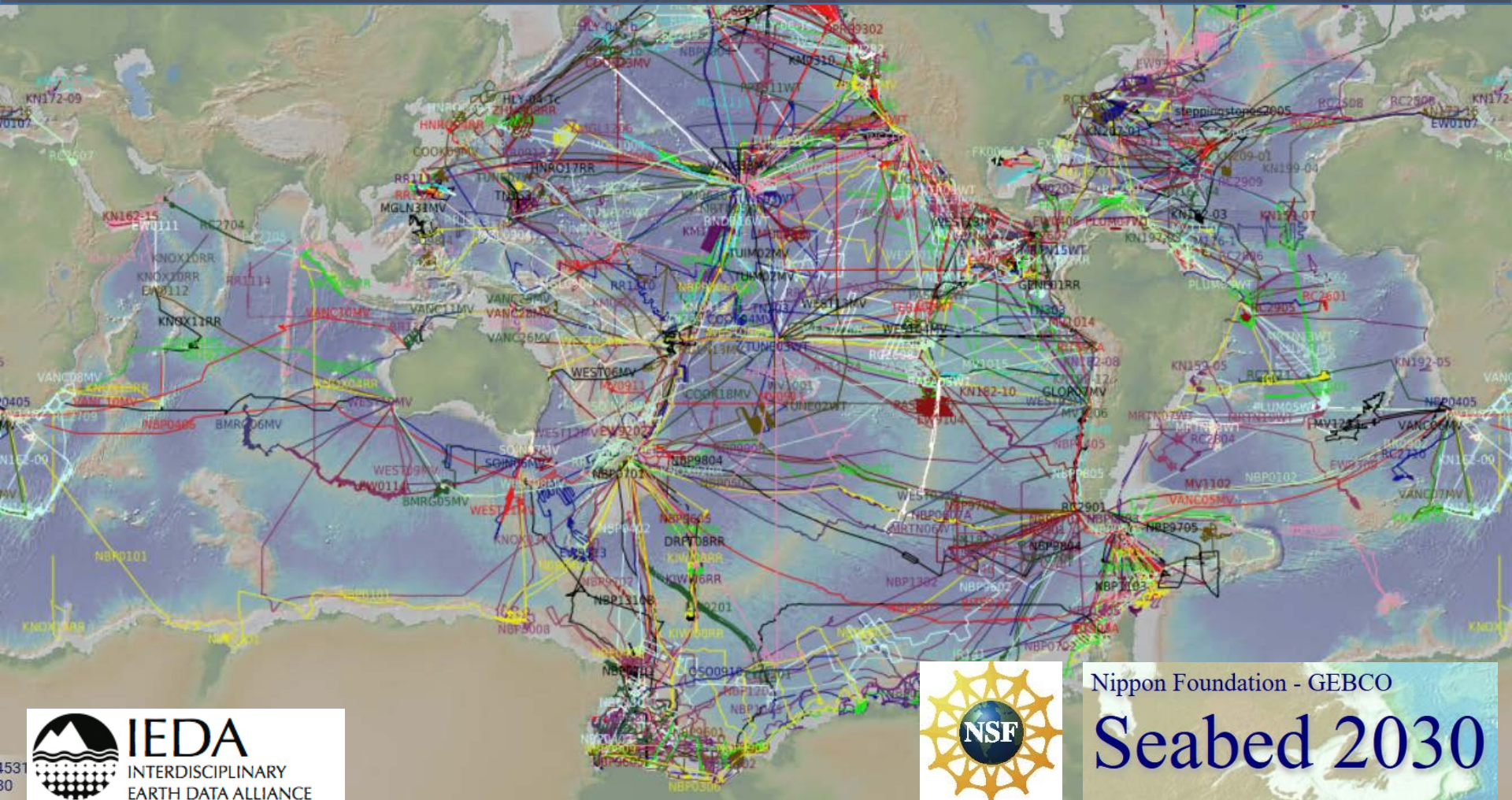


# Frank Nitsche, Vicki Ferrini and the IEDA team



# IEDA/MGDS - Background

*IEDA = Interdisciplinary Earth Data Alliance*

*MGDS = Marine Geoscience Data Synthesis*

- Data from US academic ships (R2R)
- Data from *NB Palmer* and *LM Gould*
- Collected by PI-driven project
- Restricted hold for two years (usually)
- Integrating multibeam data into GeoMapApp and GMRT
- Long-term archive at NCEI

*R/V N.B. Palmer*



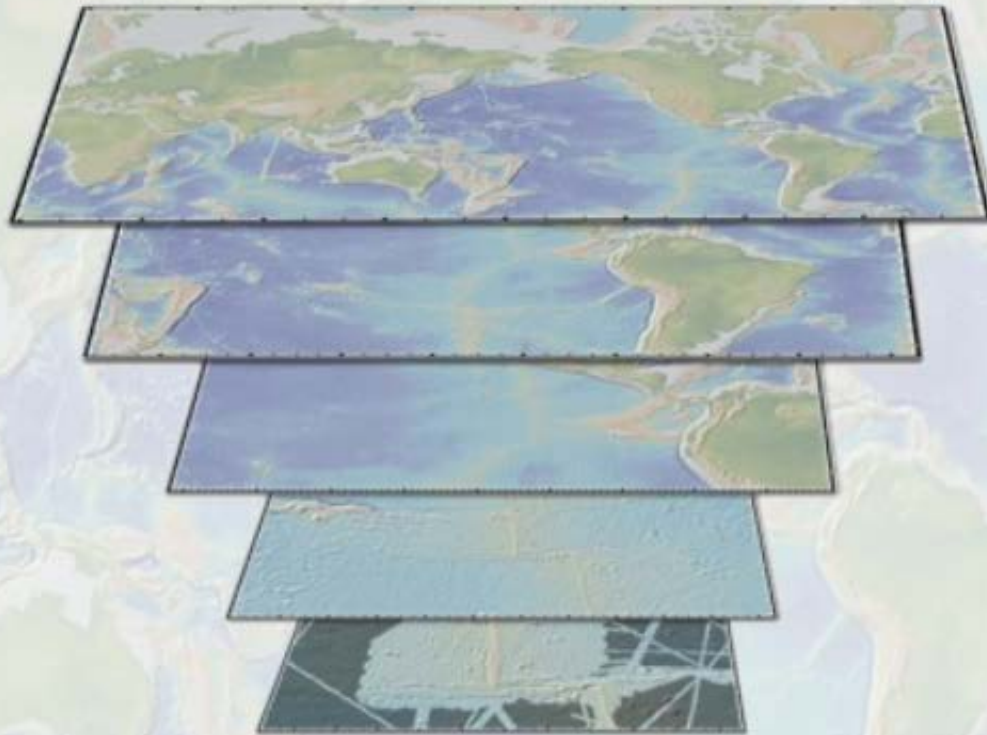
*R/V L.M. Gould*



*Photo by Debbie Meyer*



# GMRT – Global Multi-Resolution Topography



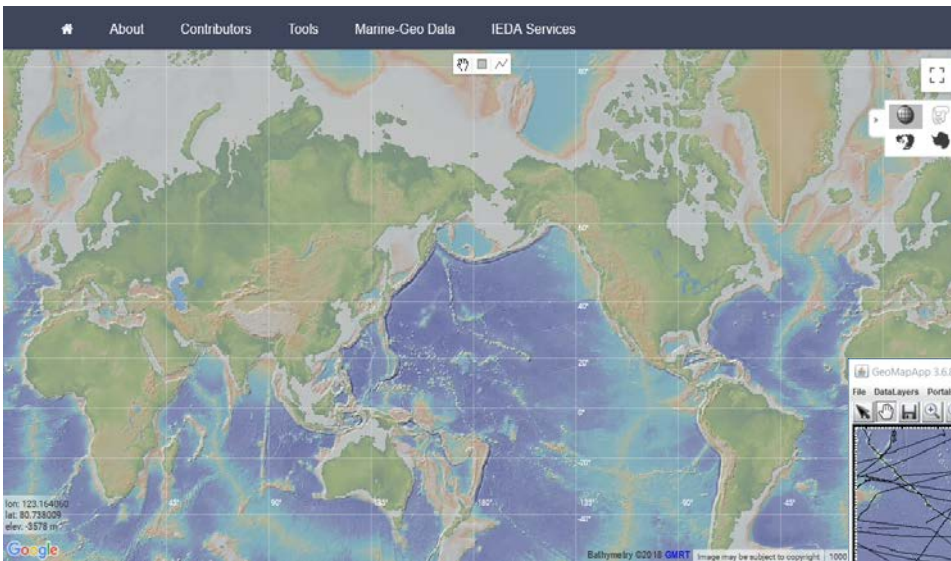
Global coverage



100m swath data and grids

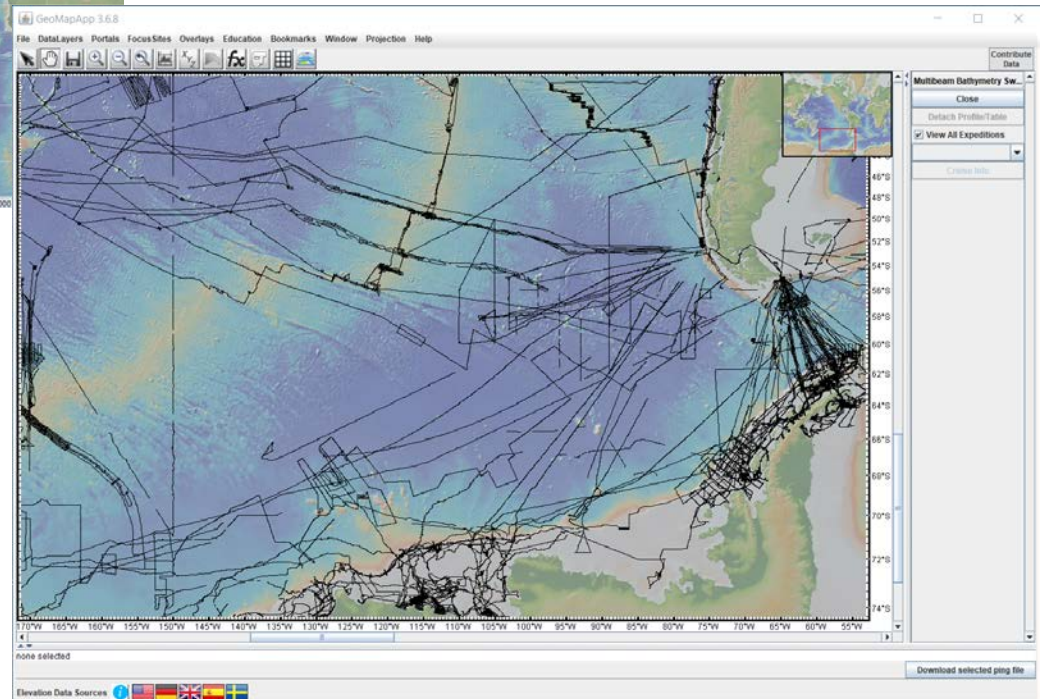
User experiences seamless transition between resolutions based on chosen zoom level

# GMRT – Access to data



[www.gmrt.org/GMRTMapTool/](http://www.gmrt.org/GMRTMapTool/)

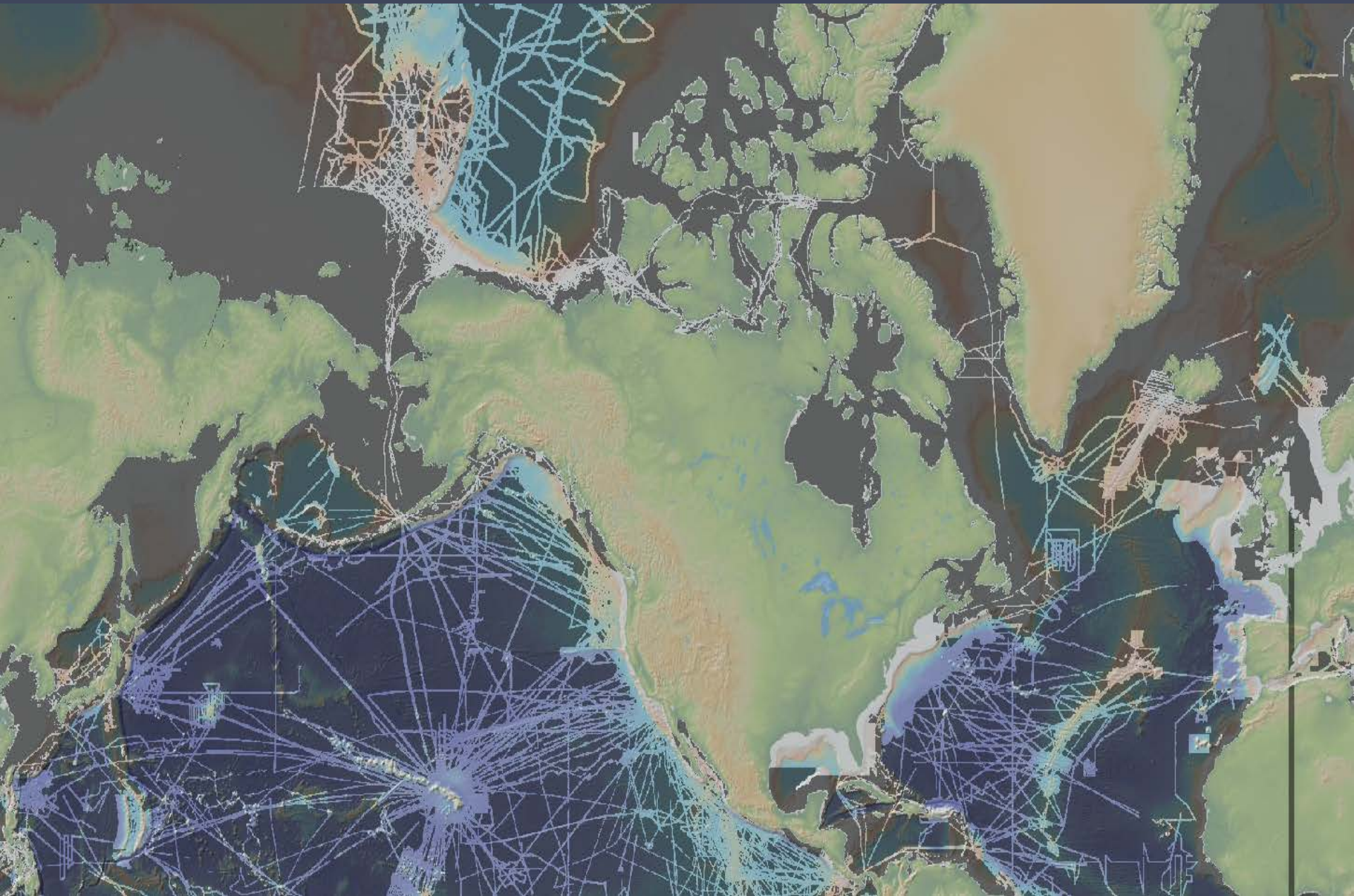
**GeoMapApp**  
[www.geomapapp.org](http://www.geomapapp.org)



**Web Services**  
**GMRT WMS (Mercator and Polar projection)**

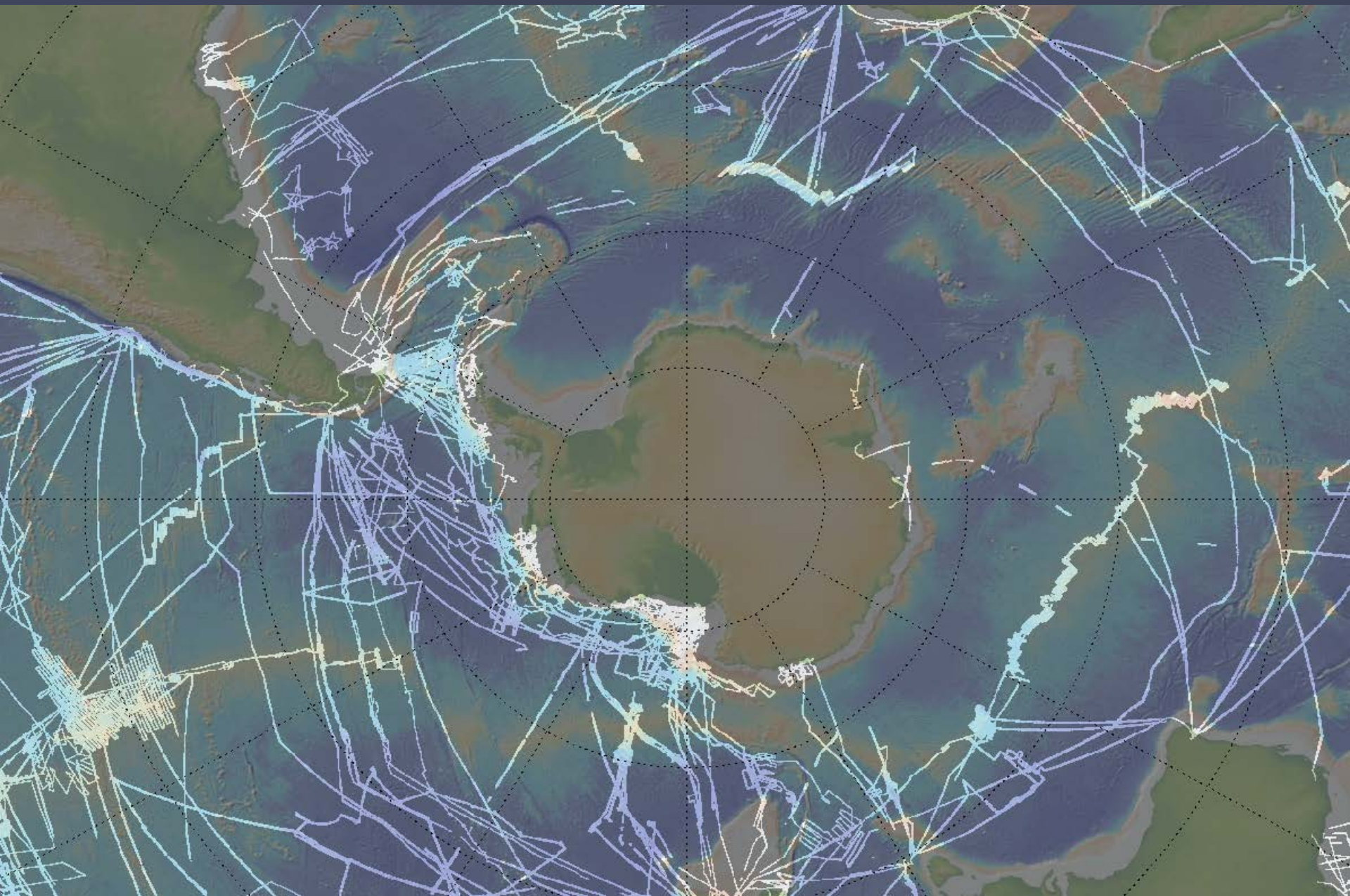


# GMRT - Arctic and North Pacific Data Holdings





# GMRT - Southern Ocean Data Holdings



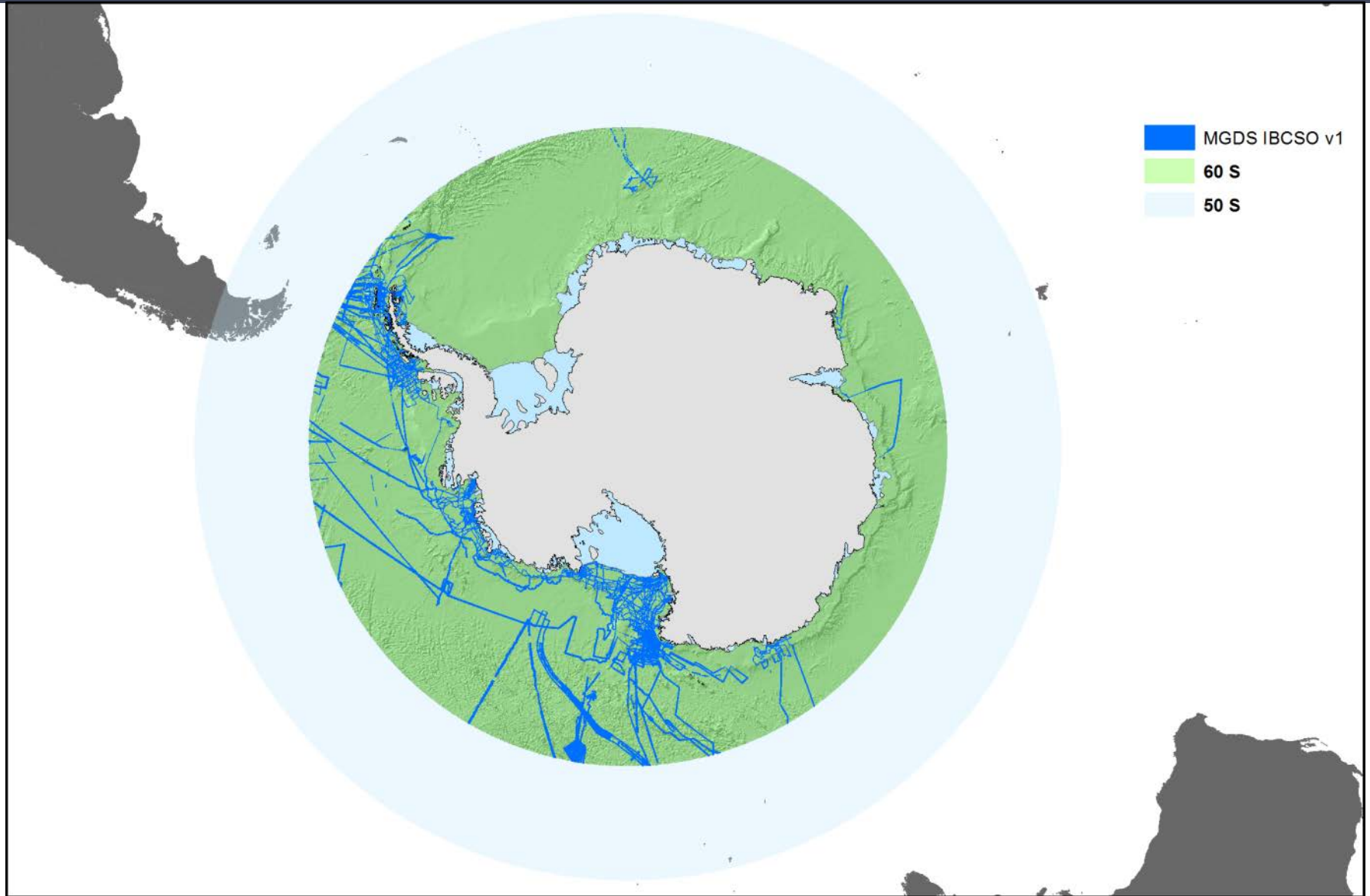


# GMRT - Southern Ocean Data Holdings

A map of the Southern Ocean, centered on Antarctica, showing a dense network of survey tracks. The tracks are color-coded, with blue and purple lines forming a complex web across the ocean, and yellow and orange lines indicating specific survey areas. The map includes a grid of latitude and longitude lines.

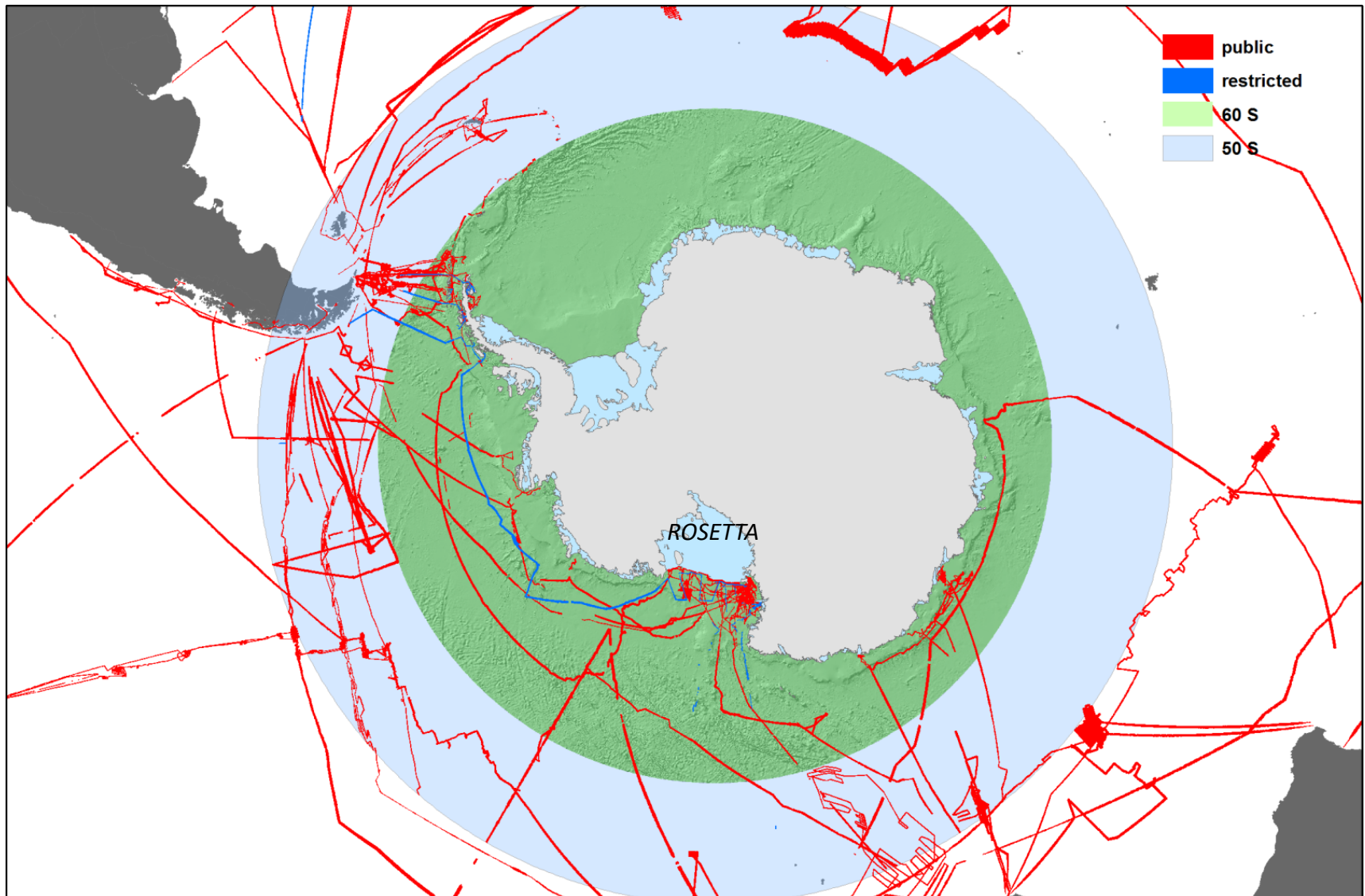
**GMRT grids (400m) have been provided to regional data centers**

# Data Provided for IBCSO v1





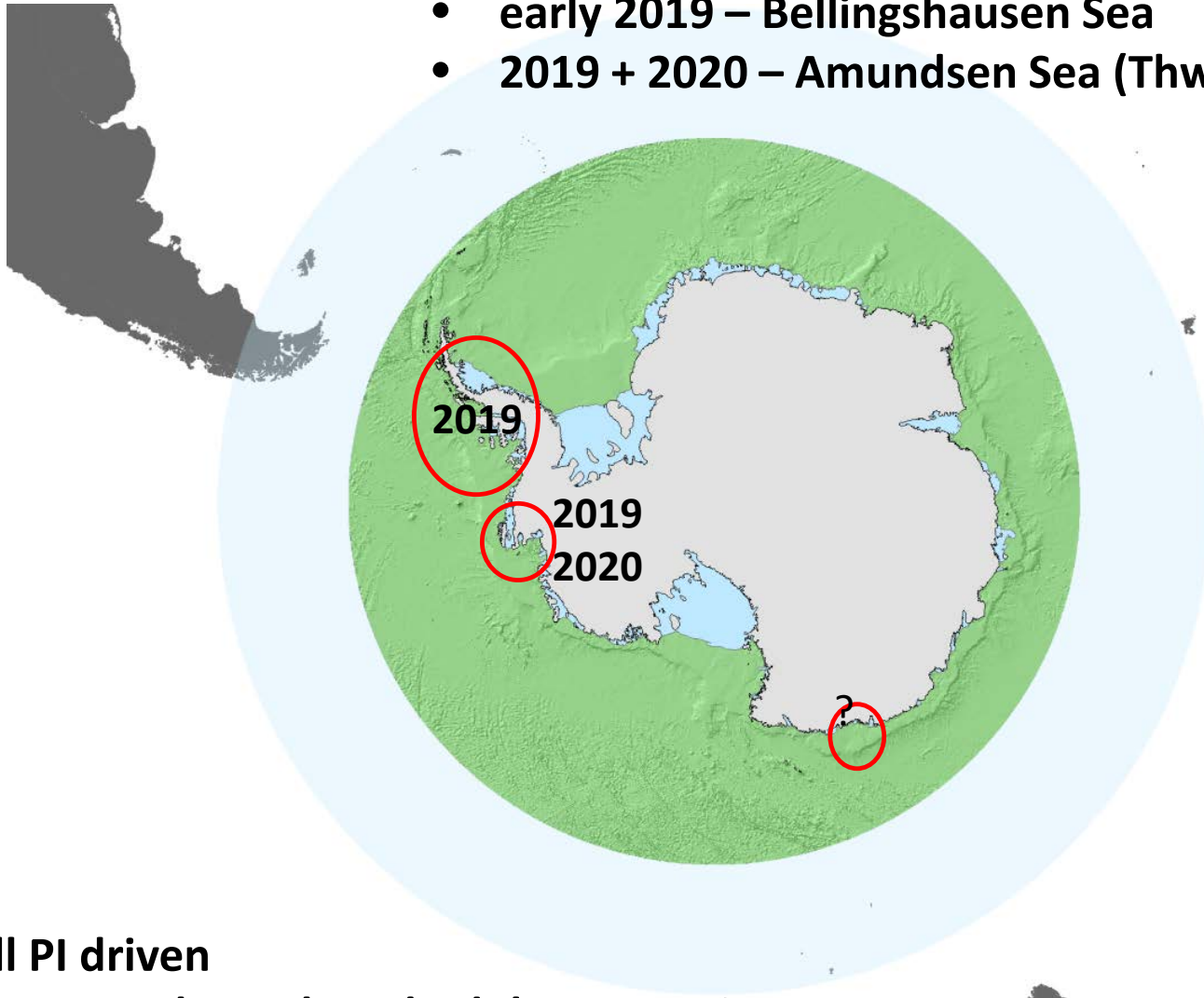
# MGDS multibeam data not in IBCSO v1



23 new multibeam cruises 2011 - 2017

# Upcoming Cruises

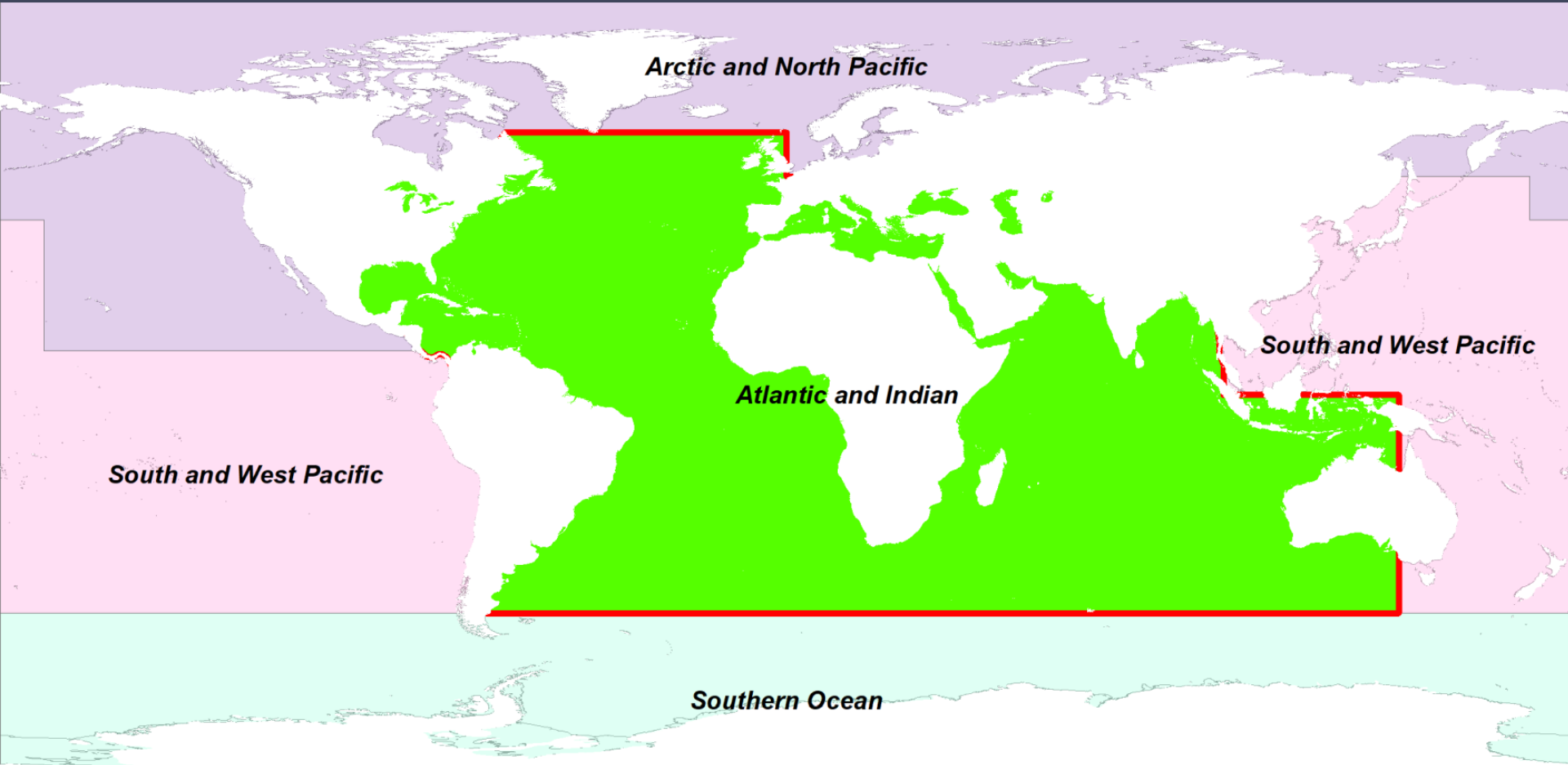
- early 2019 – Bellingshausen Sea
- 2019 + 2020 – Amundsen Sea (Thwaites)



- All PI driven
- Not sure about the schedule



# Atlantic and Indian Ocean Regional Center



***Atlantic & Indian Regional workshop***

***Oct 30 – Oct 31, at Lamont***

**Contact: [atlantic-indian@seabed2030.org](mailto:atlantic-indian@seabed2030.org)**

Nippon Foundation - GEBCO

**Seabed 2030**