

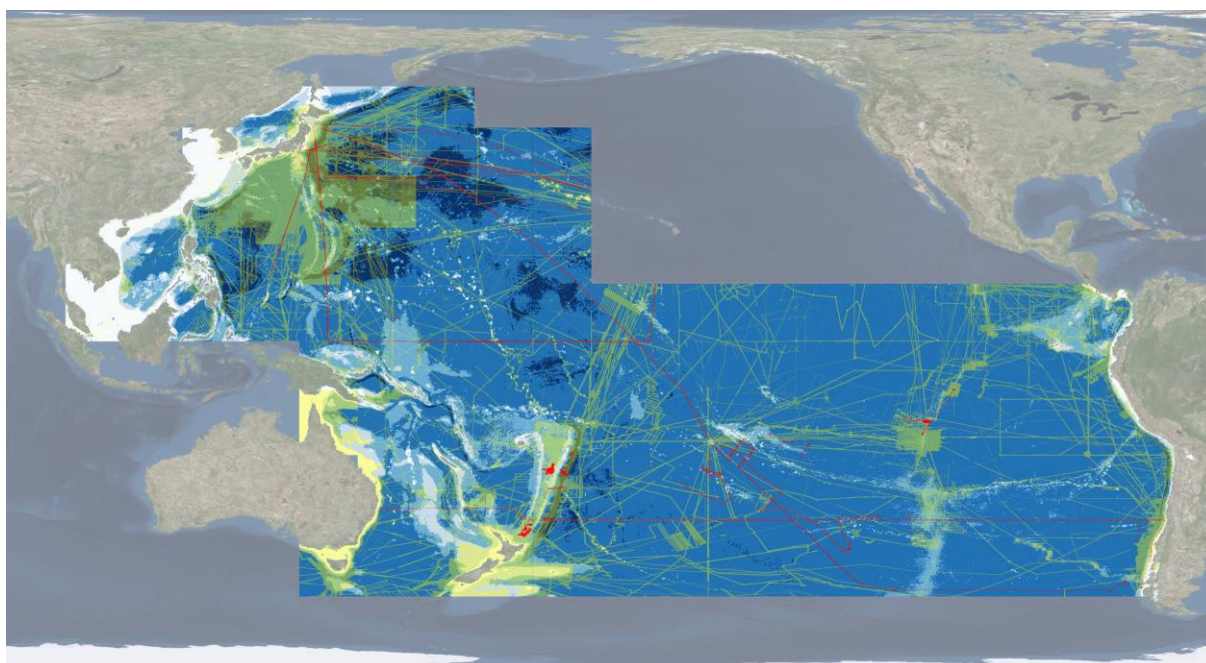


Nippon Foundation – GEBCO – Seabed 2030 Project

Inaugural South and West Pacific Centre Workshop

3– 6 March 2019

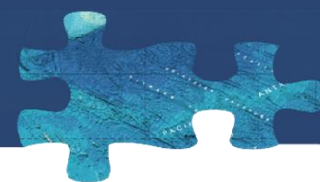
Royal Port Nicholson Yacht Club, Wellington, New Zealand



Convenor Geoffroy Lamarche (NIWA/Uni Auckland)

Committee: Jenny Black (GNS Science); Adam Greenland (LINZ); Kevin Mackay (NIWA); Helen Neil (NIWA); Glen Rowe (LINZ); Vaughan Stagpoole (GNS Science); Tilmann Steinmetz (NIWA); Deborah Frost (LINZ); Evgenia Bazhenova (NIWA)

email: [pacific@seabed2030.org](mailto:pacific@seabed2030.org)



## Sunday 3 March – Arrival, Icebreaker

17:00 – 19:00 Registration and icebreaker

---

## Monday 4th March – Introduction, presentations

08.45–09.00 Registration

### Session 1: Introduction - chair Geoffroy Lamarche

- 09:00–09:20 Mana Whenua Mihi Whakatau - Māori (indigenous people of the land) welcome, *Peter Jackson, Kaumatua - Taranaki Whānui*  
*Geoffroy Lamarche (NIWA, SaWPaC Head)*
- 09:20–09:30 Housekeeping, *Geoffroy Lamarche (NIWA, SaWPaC Head)*
- 09:30–10.00 Welcome - *Helen Neil, General Manager, Operations, NIWA*
- Opening keynote - Seabed 2030 – Seabed 2030: Past, present and future,  
*Robin Falconer (GEBSCO)*

10:00–10:30 Coffee Break

Group photo

### Session 2: Presentations (Data in the SaWP region) - chair Vaughan Stagpoole

- 10.30–11.00 Introduction and objectives, *Geoffroy Lamarche (NIWA, SaWPaC Head)*
- 11.00–11.20 Bathymetric Surveys of JHOD: Sharing in Seabed 2030, *Masanao Sumiyoshi (Hydrographic and Oceanographic Department, Japan Coast Guard)*
- 11.20–11.40 Introduction to JAMSTEC and its possible contribution to Seabed 2030, *Eiichi Kikawa (JAMSTEC)*
- 11.40–12.00 The introduction of the Seabed investigation in Chinese Academy of Sciences, *Diao Xinyuan (Chinese Academy of Sciences)*
- 12.00–12:30 Floor Discussion

12.30–13.30 Lunch

### Session 2: Presentations (Data in the SaWP region) - chair Adam Greenland

- 13.30–13.45 South and West Pacific Centre: progress so far, *Kevin Mackay and Tilmann Steinmetz (NIWA)*
- 13.45–14.00 Arctic and North Pacific RDACC Update, *Paul Johnson (CCOM-UNH)*
- 14:00–14:15 Bathymetric datasets held at SPC on behalf member countries, *Sachindra Singh (SPC)*
- 14:15–14:30 AusSeabed: Collaborating to maximise Australian Seabed Mapping Efforts, *Kim Picard (Geoscience Australia)*
- 14:30–14:45 Seabed mapping efforts in the Coral Sea, *Robin Beaman (James Cook University)*

*14:45–15.15 Coffee break and portal demo session*

**Session 3: Presentations (Data in the SaWP region) - chair Jenny Black**

- |             |  |
|-------------|--|
| 15.15–15.40 | French contribution to Seabed 2030 (Shom), <i>Mikael Le Gleau (SHOM Nouméa)</i>  |
| 15.40–16.00 | Deepsea swath bathymetric data from research vessels in the EEZ of New Caledonia, Wallis and Futuna, French Polynesia, <i>Julien Collot (Geological Survey of New Caledonia, Nouméa)</i> |
| 16:00–16:15 | Status of Bathymetry Data in the Cook Islands, <i>Vaipo Mataora (Infrastructure Cook Islands)</i>  |
| 16.15–16.30 | The RNZN and Seabed 2030 - <i>CDR Matt Wray (Royal New Zealand Navy)</i>   |
| 16.45–17.00 | Day 1 wrap up  |
- 
- 

**Tuesday 5 March Day 2 – cont. Presentations and Discussion**

**Session 4: Presentations (Data centres, collection, technology) - chair Kevin Mackay**

- |             |  |
|-------------|--|
| 09.00–09.20 | GEBCO-NF Alumni Team's entry in the Shell Ocean Discovery XPRIZE competition, <i>Evgenia Bazhenova (GEBCO, SaWPaC)</i> |
| 09.20–09.40 | The Role of the IHO Data Centre for Digital Bathymetry in Seabed 2030, <i>Gina Brewer-Mills (NOAA)</i>                 |
| 09.40–10.00 | Bathymetric Data Management: Challenges, Approaches and Innovations, <i>Caitlyn Raines (Esri Redlands, USA)</i>        |
| 10.00–10.15 | Open Geospatial Consortium (OGC) on DGGS (Discrete Global Grid System), <i>Robert Gibb (Landcare Research)</i>         |

*10.15–10.45 Coffee break*

**Session 5: RMC Discussion – led by Geoffroy Lamarche**

- |             |  |
|-------------|--|
| 10.45–11:00 | Introduction to Discussion Sessions  |
| 11:00–11.45 | Regional Mapping Committee (RMC) composition discussion  |
| 11.45–12.00 | Relationship Building in SW Pacific, John Maschke ( <i>Australasian Hydrographic Society</i> ) |

*12.00–13.00 Lunch*

**Session 6: SAWPAC Data Discussion – led by Vanessa Lucieer**

- |             |   |
|-------------|---|
| 13.00–15.00 | Data we have / know about – identify gaps<br>Missing data set list; How to contribute; Data security; Data release agreements |
|-------------|---|

*15.00–15.30 Coffee break*

**Session 7: Discussion Data Discussion cont. – led by Geoffroy Lamarche & Kevin Mackay**

- |             |   |
|-------------|---|
| 15:30–17:00 | Problems, challenges<br>Time line             |
| 17:00–17:30 | Wrap up from Discussion Summary / Conclusions |

18.30 – Conference Dinner

## Wednesday 6 March Day 3 – Summary & Conclusions

**(PLEASE NOTE DIFFERENT LOCATION - CQ HOTEL 223 Cuba St)**

### Session 8: Conclusions – led by Geoffroy Lamarche

09.00–10.15 Action plan; Data release agreements; Strategy planning

(We will break in groups to share experiences and develop individual action plans)

10.15–10.45 *Coffee break*

10.45–12.00 Data exchange and small discussions

Wrap up and summary - reporting from break-out sessions

12:00 *Workshop end*

