

# Griding procedures

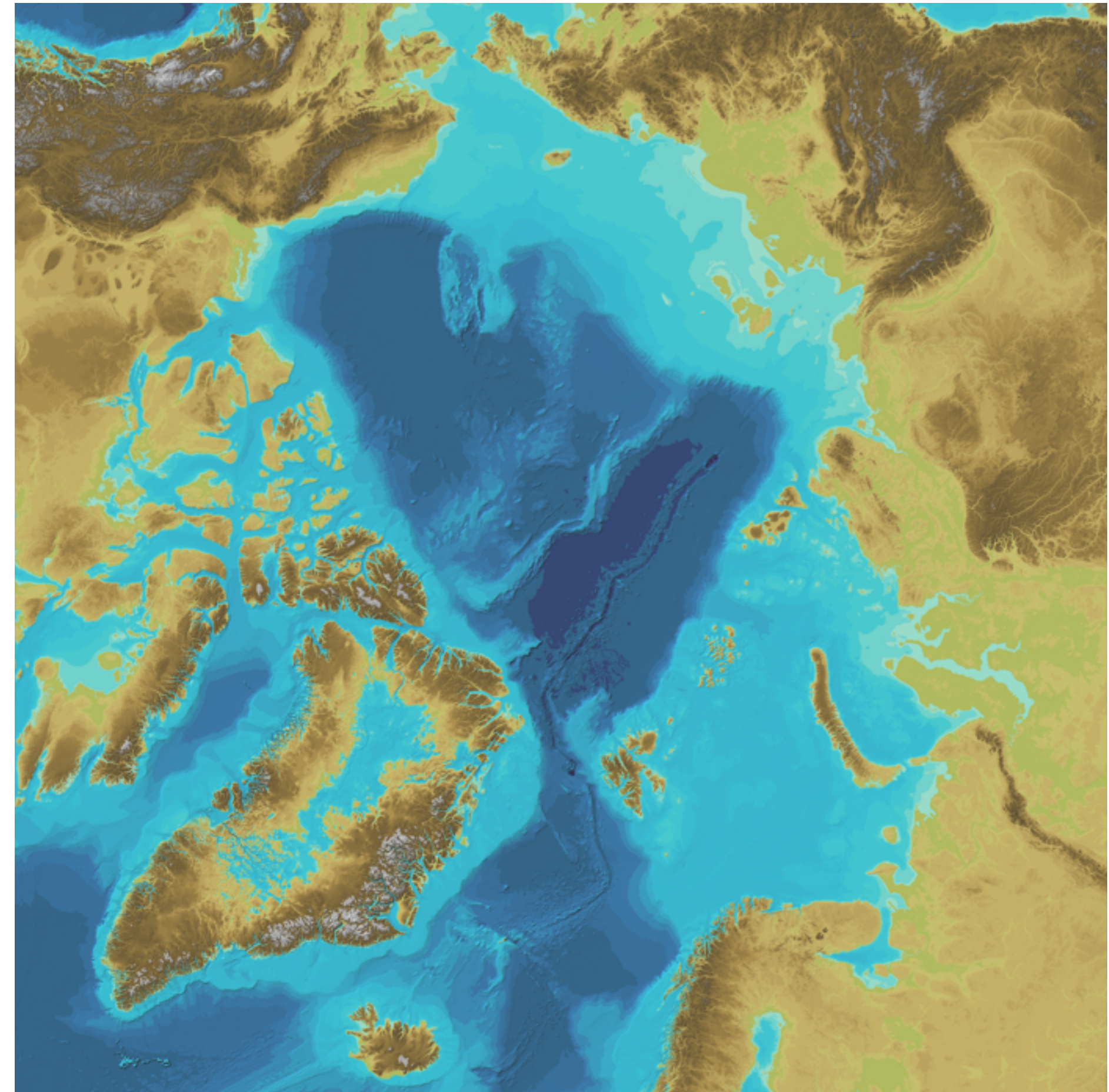
Rezwan Mohammad  
Stockholm University

# Data flow

1. Meta data and boundary polygon
2. Data cleaning
3. Convert to XYZ format

# Gridding procedures

1. Format all data in XYZ format
2. Tile the domain into 9 sub-regions
3. Run block median using a grid of 100 metre resolution
4. Grid at 2000 metre resolution using a continuous spline function with tension
5. Resample to 100 metre resolution
6. Overlay high resolution multi beam data pre-processed by block median at 500, 250 and 100 metre





# Gridding procedures

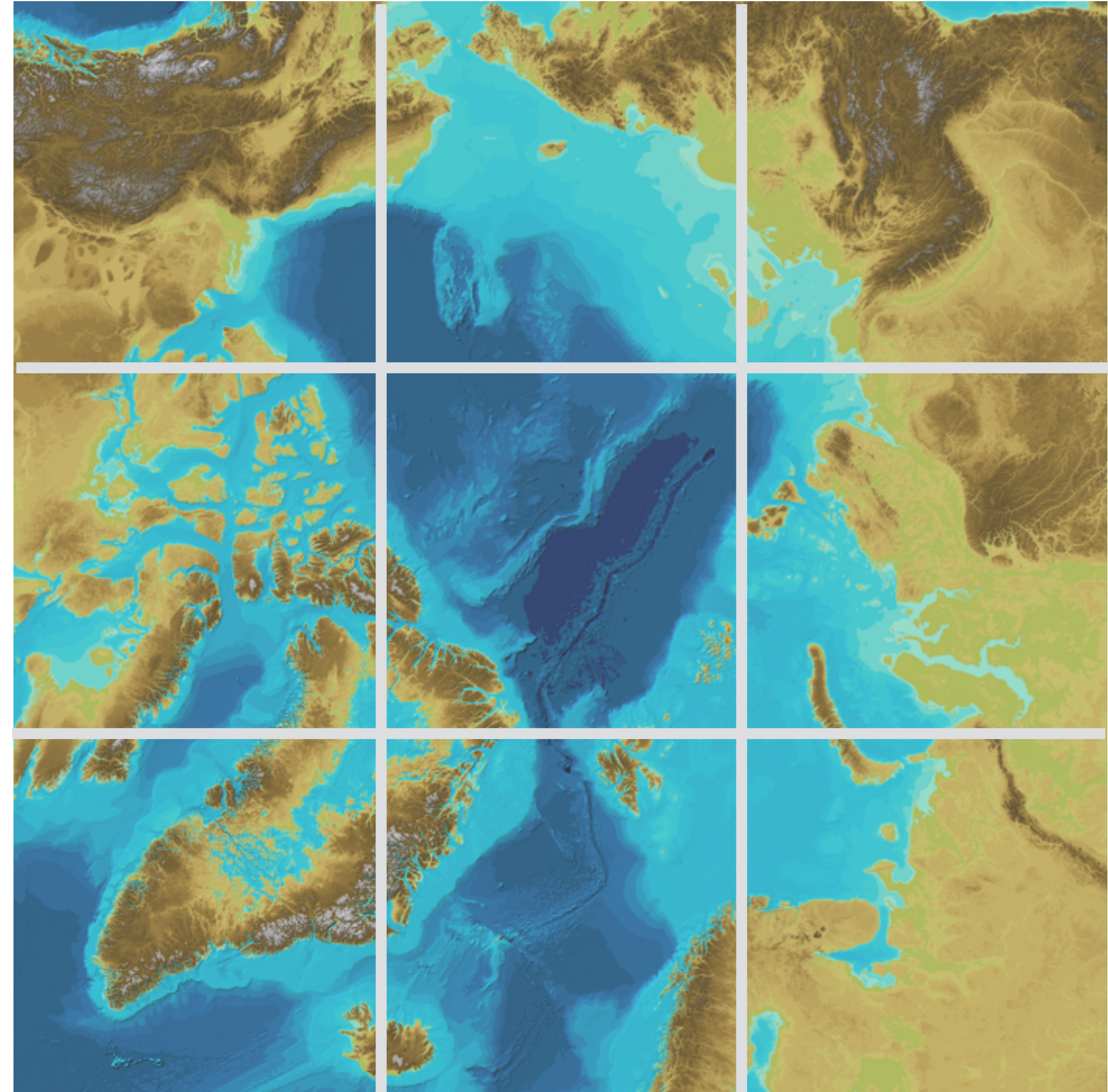
1. Format all data in XYZ format
2. Tile the domain into 9 sub-regions
3. Run block median using a grid of 100 metre resolution
4. Grid at 2000 metre resolution using a continuous spline function with tension
5. Resample to 100 metre resolution
6. Overlay high resolution multi beam data pre-processed by block median at 500, 250 and 100 metre

-830718.029462854145	-397822.498733108107	-502.304473876953125
-830703.031467129826	-397822.498733108107	-506.56500244140625
-830688.033471405623	-397822.498733108107	-506.512176513671875
-830673.035475681419	-397822.498733108107	-509.8924560546875
-830658.037479957216	-397822.498733108107	-512.60369873046875
-830643.039484233013	-397822.498733108107	-510.825531005859375
-830628.04148850881	-397822.498733108107	-506.987548828125
-830613.043492784607	-397822.498733108107	-508.0966796875
-830598.045497060404	-397822.498733108107	-508.114288330078125
-830583.047501336201	-397822.498733108107	-506.95233154296875
-830568.049505611998	-397822.498733108107	-507.022735595703125
-830553.051509887795	-397822.498733108107	-505.9840087890625
-830538.053514163592	-397822.498733108107	-504.663604736328125
-830523.055518439272	-397822.498733108107	-503.888946533203125
-830508.057522715069	-397822.498733108107	-504.76922607421875
-830493.059526990866	-397822.498733108107	-504.381927490234375
-830478.061531266663	-397822.498733108107	-503.6953125
-830463.06353554246	-397822.498733108107	-502.920654296875
-830448.065539818257	-397822.498733108107	-503.096710205078125
-830433.067544094054	-397822.498733108107	-504.4171142578125
-830418.069548369851	-397822.498733108107	-505.5791015625
-830403.071552645648	-397822.498733108107	-505.913604736328125
-830388.073556921445	-397822.498733108107	-505.755157470703125
-830373.075561197242	-397822.498733108107	-505.948822021484375
-830358.077565473039	-397822.498733108107	-506.582611083984375
-830343.079569748836	-397822.498733108107	-505.89599609375
-830328.081574024633	-397822.498733108107	-505.0333251953125
-830313.08357830043	-397822.498733108107	-504.76922607421875
-830868.009420096176	-397837.49619932432	-498.853790283203125
-830853.011424371973	-397837.49619932432	-499.804473876953125



# Gridding procedures

1. Format all data in XYZ format
2. Tile the domain into 9 sub-regions
3. Run block median using a grid of 100 metre resolution
4. Grid at 2000 metre resolution using a continuous spline function with tension
5. Resample to 100 metre resolution
6. Overlay high resolution multi beam data pre-processed by block median at 500, 250 and 100 metre



# Block median at 100 m

1. Format all data in XYZ format
2. Tile the domain into 9 sub-regions
3. Run block median using a grid of 100 metre resolution
4. Grid at 2000 metre resolution using a continuous spline function with tension
5. Resample to 100 metre resolution
6. Overlay high resolution multi beam data pre-processed by block median at 500, 250 and 100 metre

1

2

3

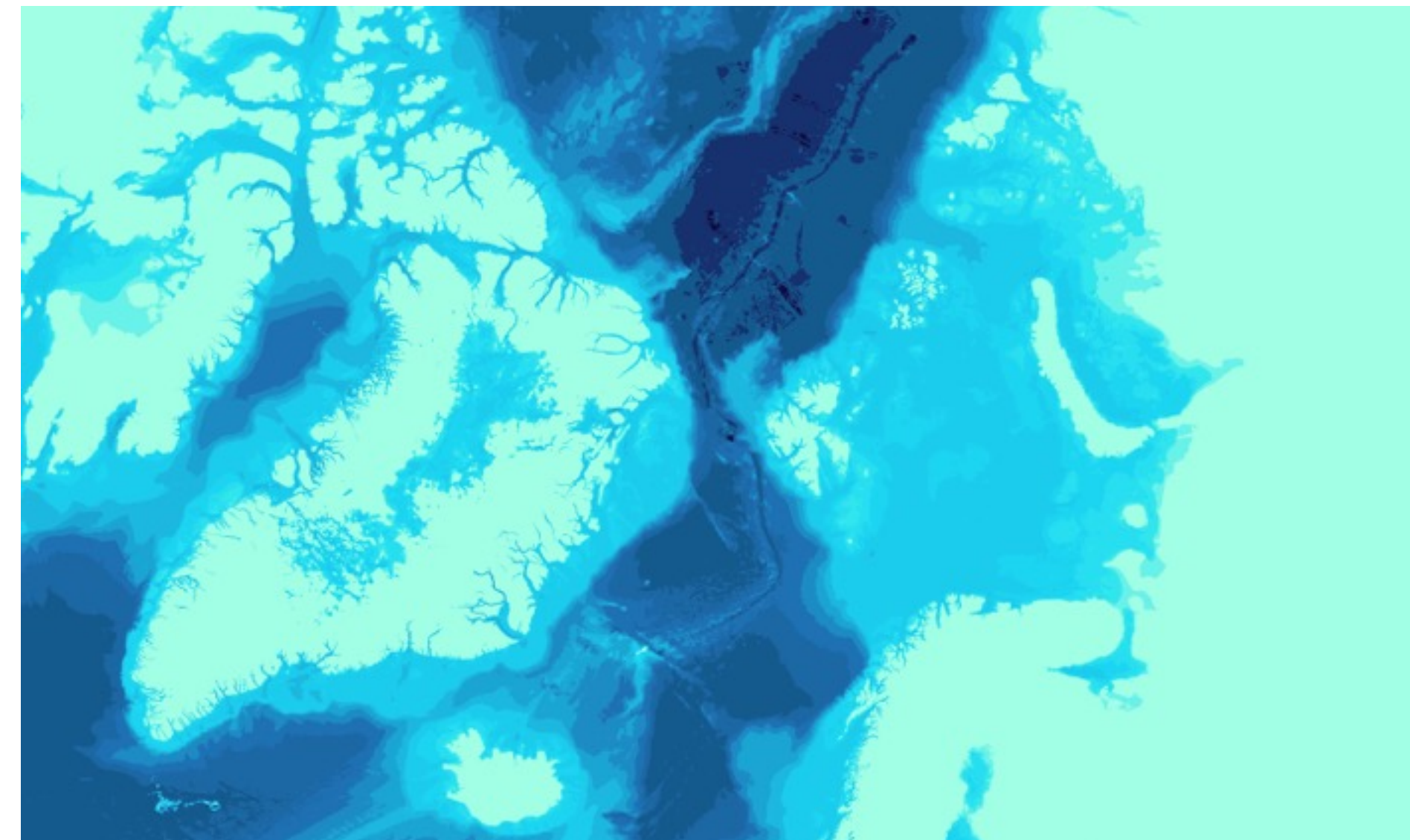
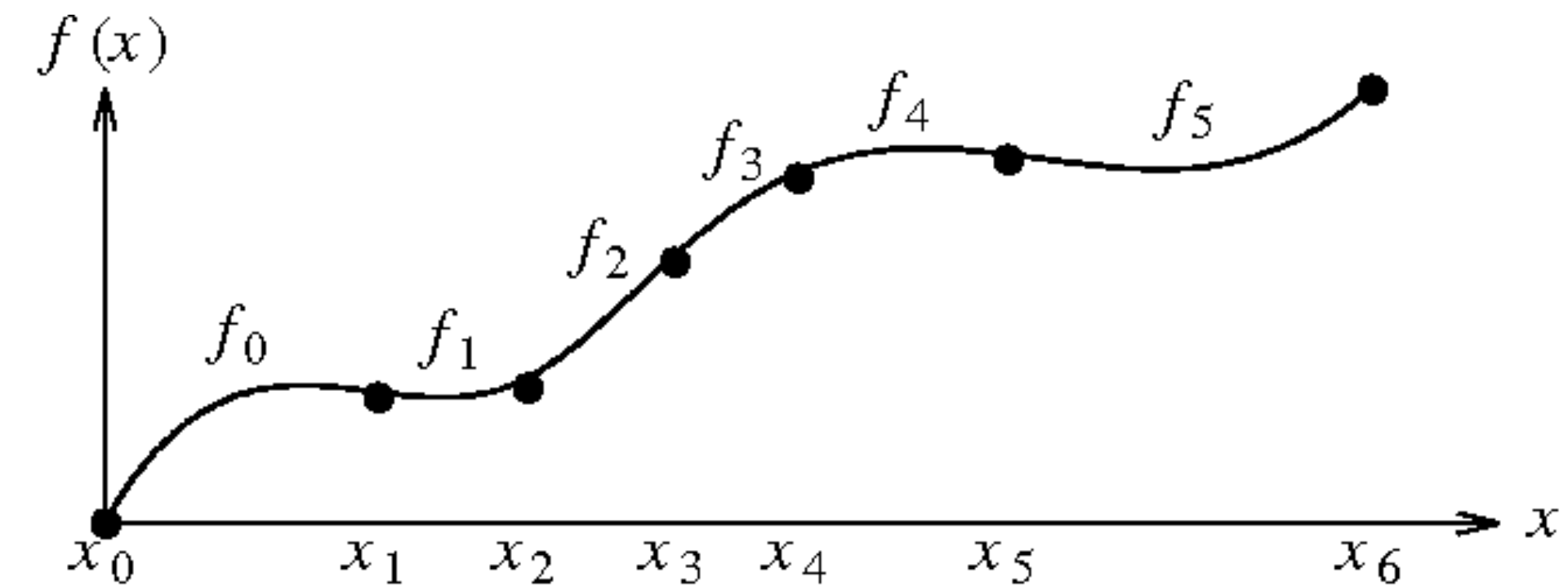
4

5



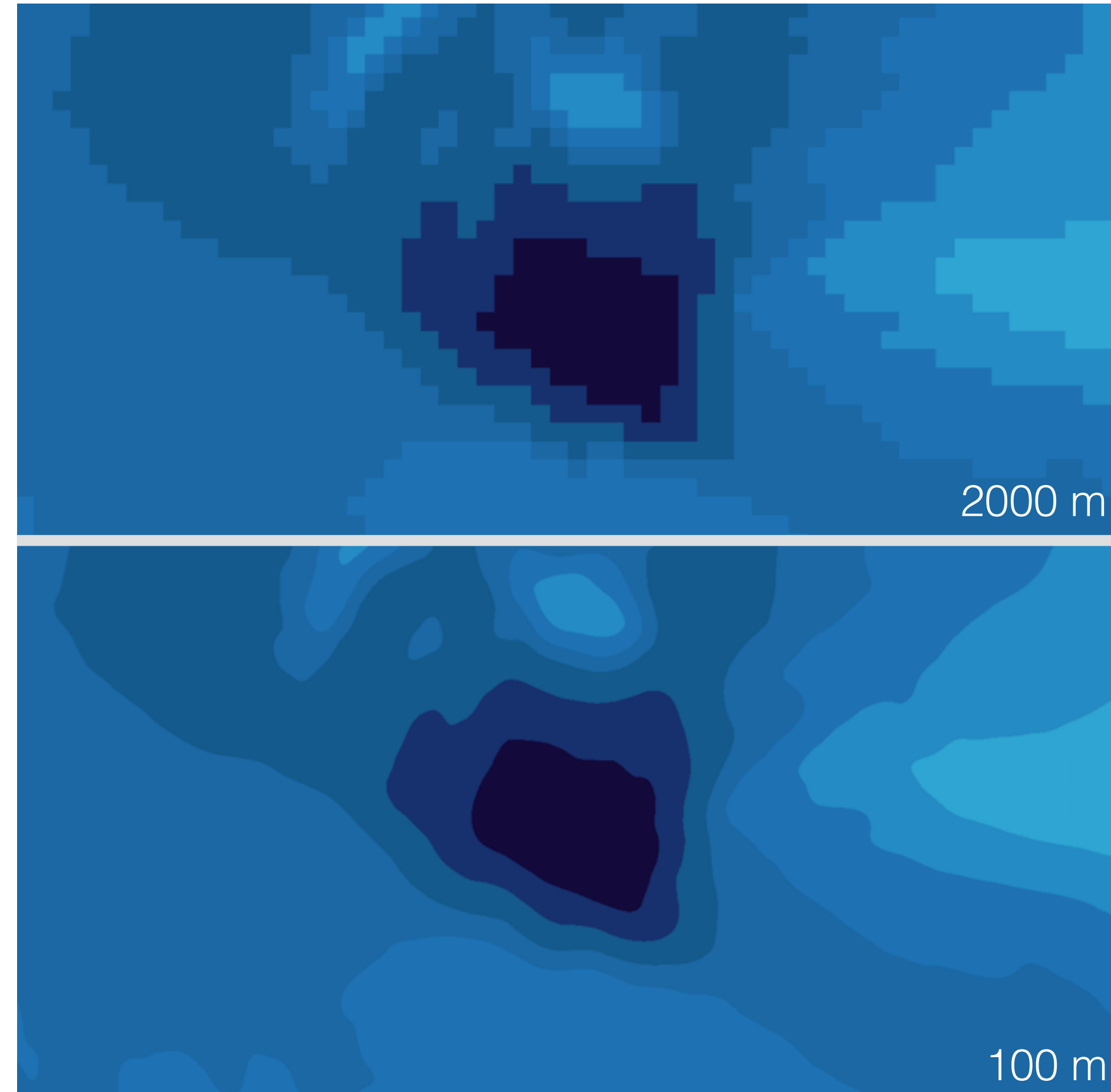
# Grid at 2000 m

1. Format all data in XYZ format
2. Tile the domain into 9 sub-regions
3. Run block median using a grid of 100 metre resolution
4. Grid at 2000 metre resolution using a continuous spline function with tension
5. Resample to 100 metre resolution
6. Overlay high resolution multi beam data pre-processed by block median at 500, 250 and 100 metre



# Resample to 100 m

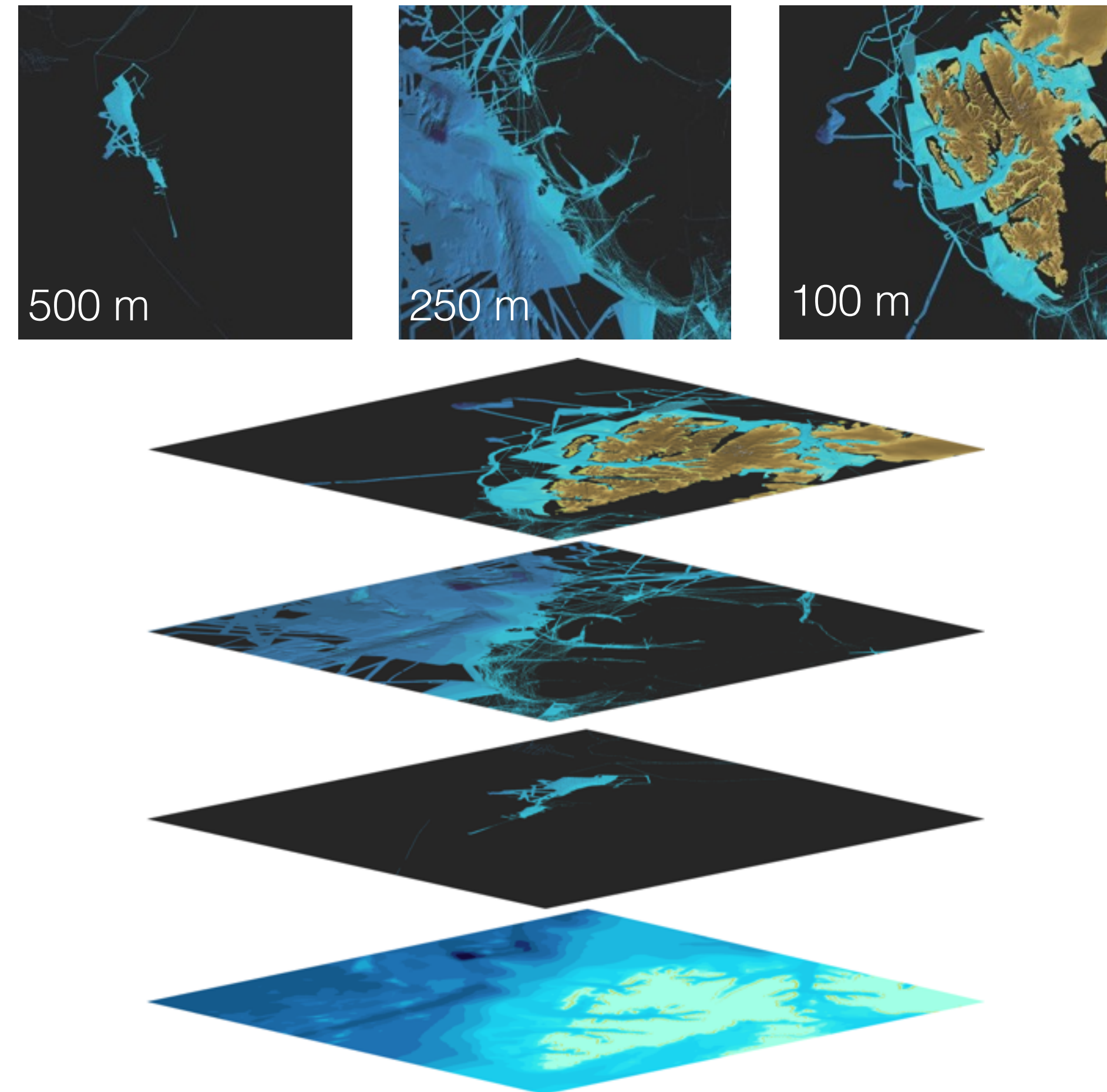
1. Format all data in XYZ format
2. Tile the domain into 9 sub-regions
3. Run block median using a grid of 100 metre resolution
4. Grid at 2000 metre resolution using a continuous spline function with tension
5. Resample to 100 metre resolution
6. Overlay high resolution multi beam data pre-processed by block median at 500, 250 and 100 metre



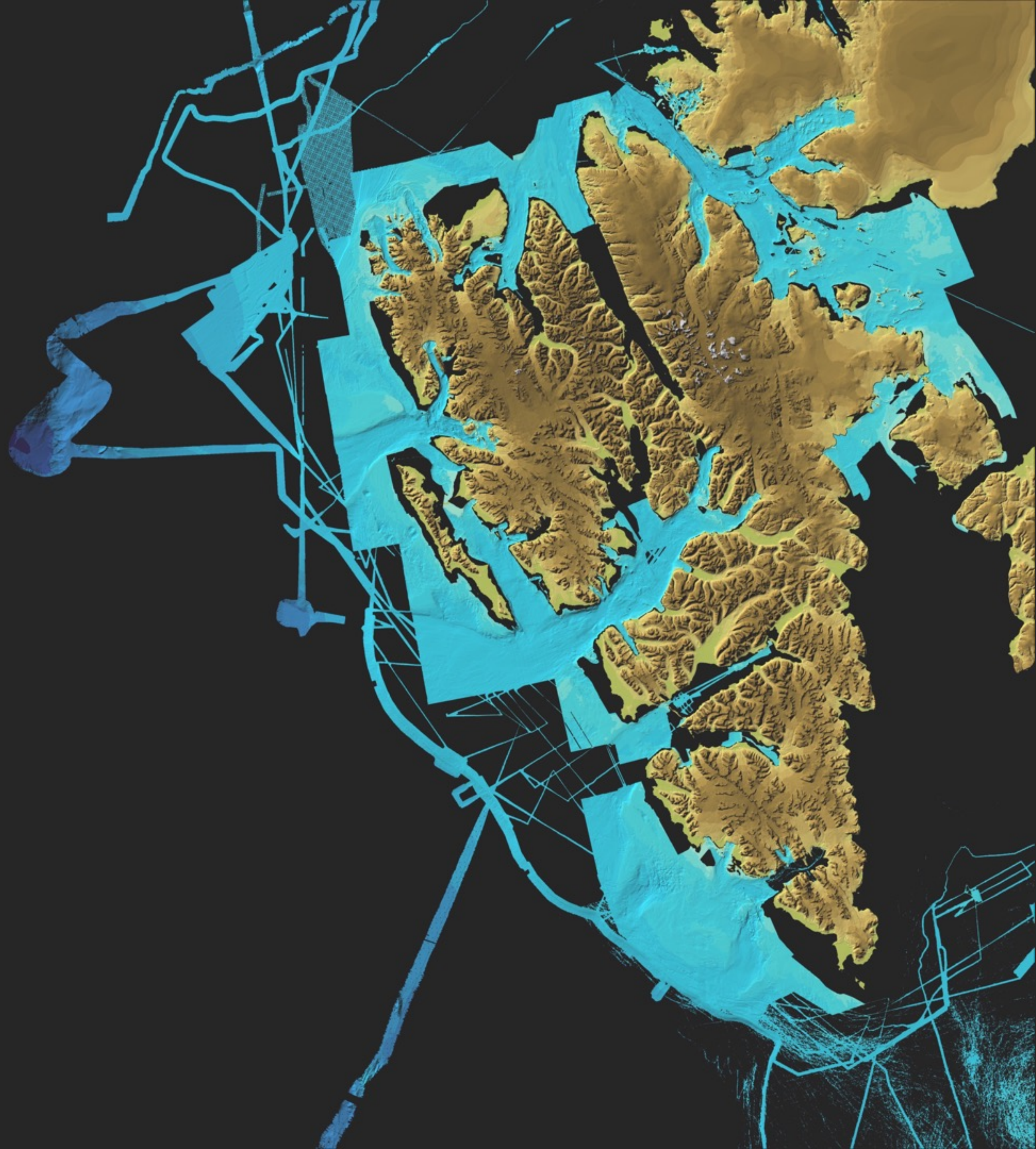


# Remove and restore

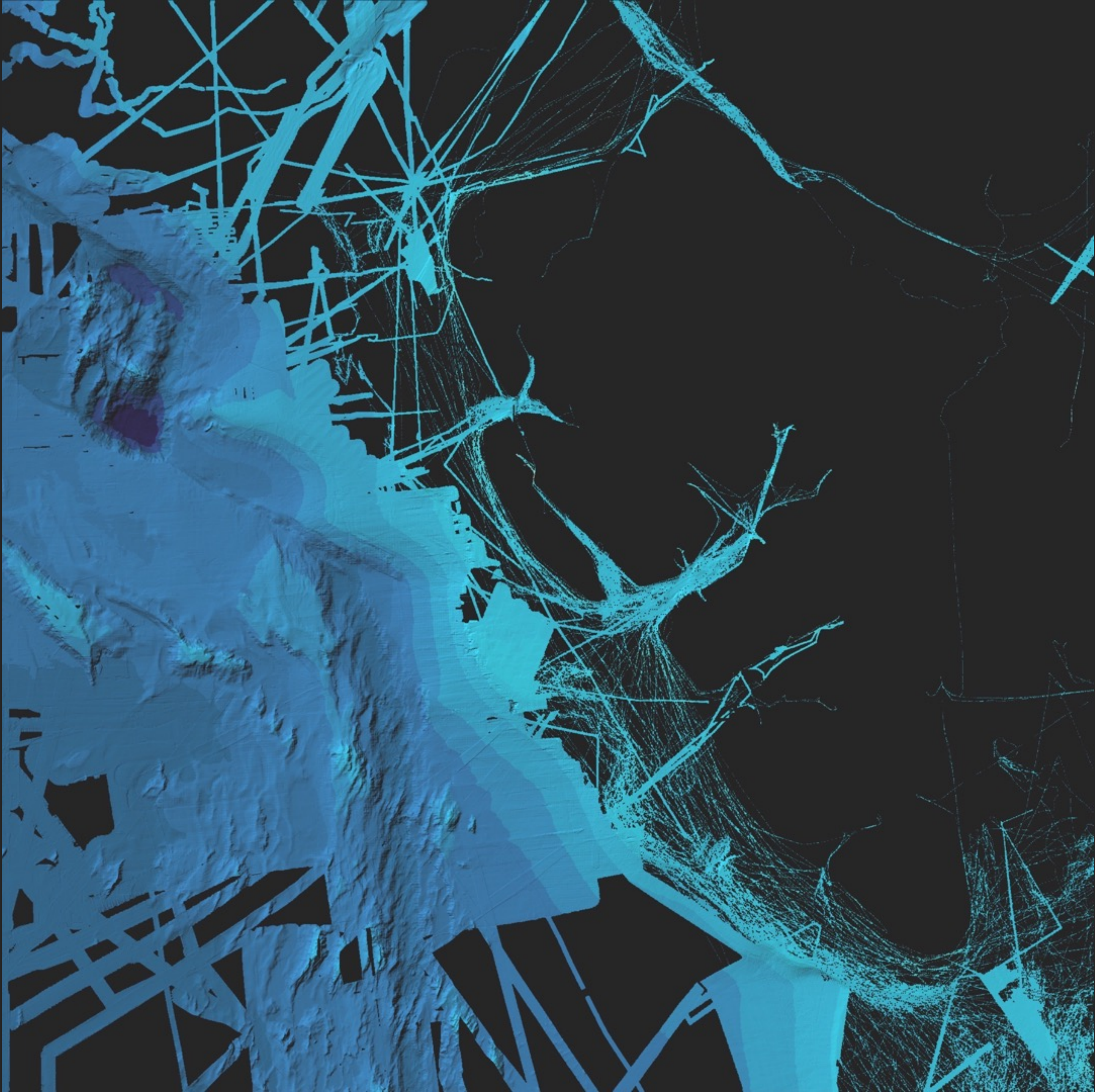
1. Format all data in XYZ format
2. Tile the domain into 9 sub-regions
3. Run block median using a grid of 100 metre resolution
4. Grid at 2000 metre resolution using a continuous spline function with tension
5. Resample to 100 metre resolution
6. Overlay high resolution multi beam data pre-processed by block median at 500, 250 and 100 metre



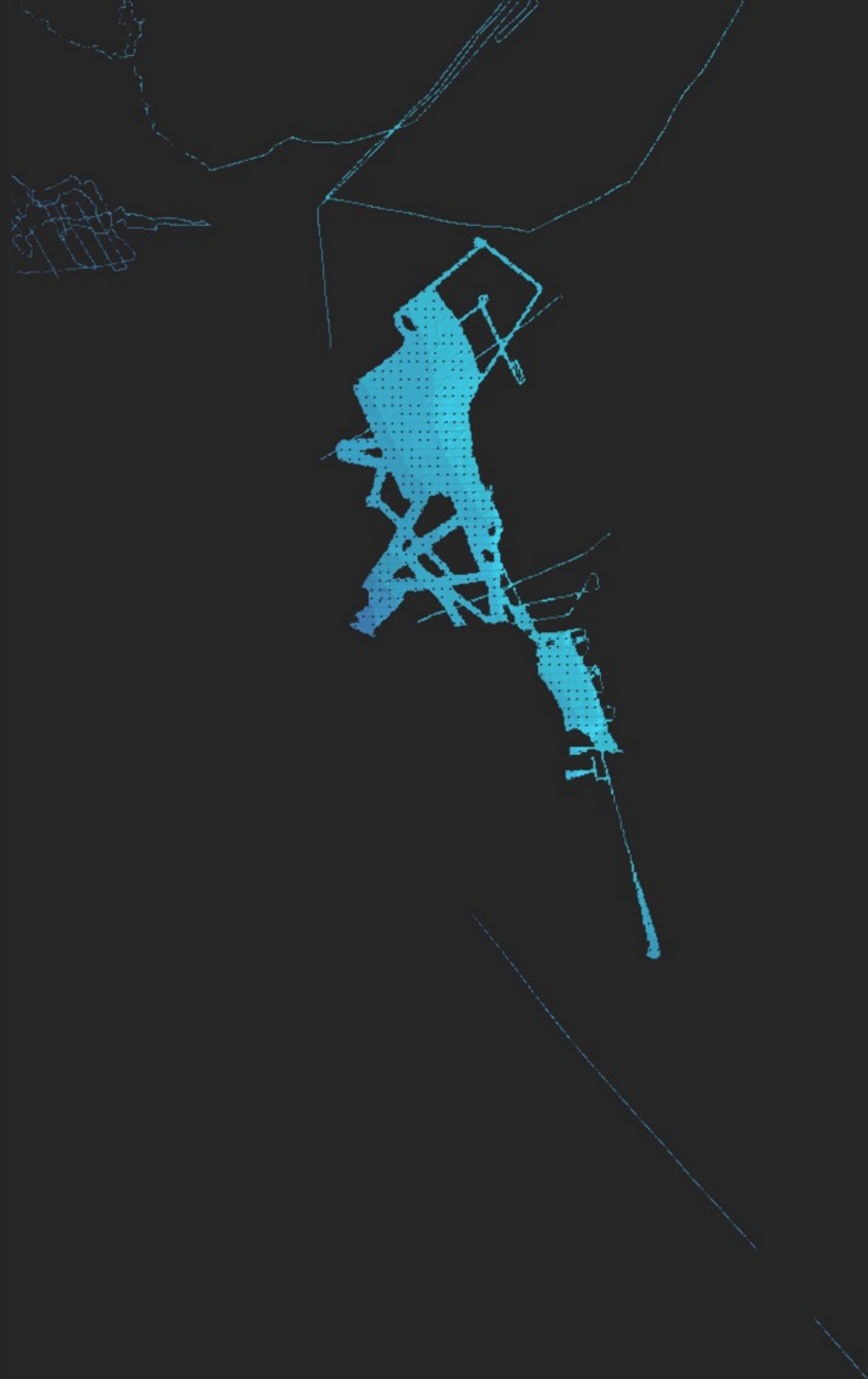










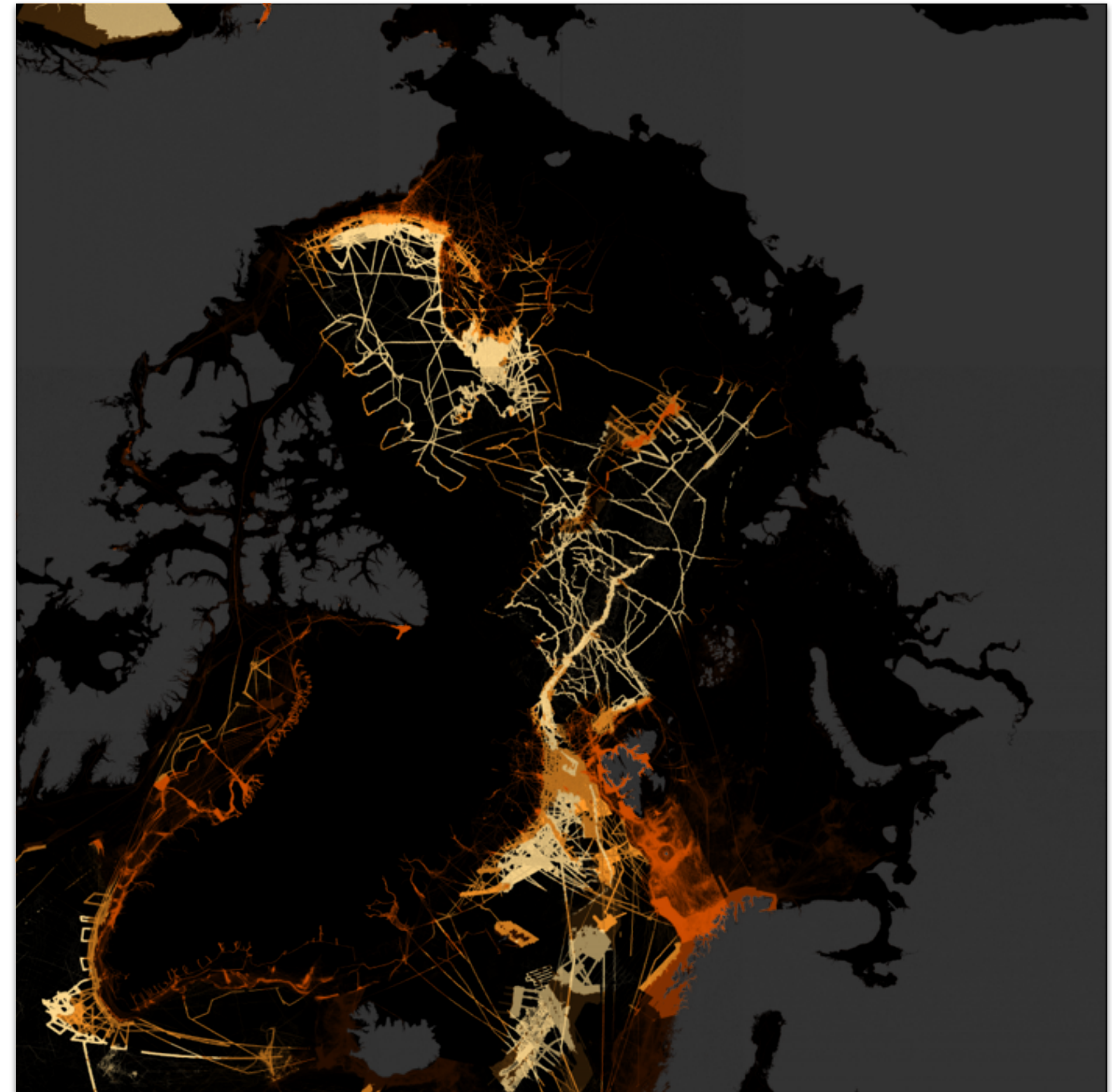






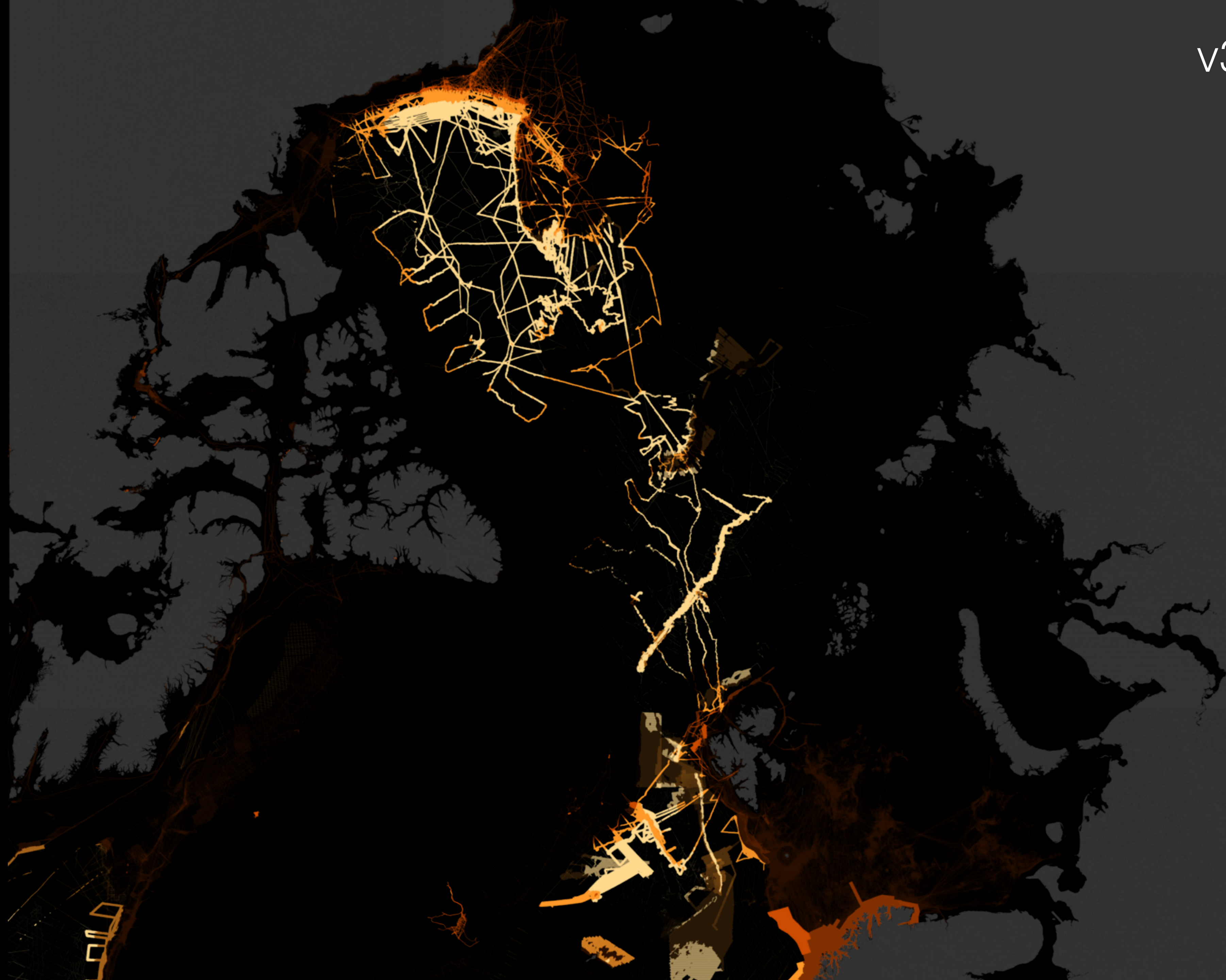
# Statistics

• ...





v3.0





v3.2





