

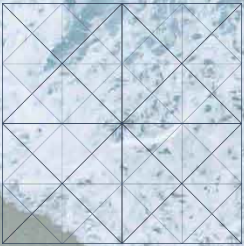


KONGSBERG

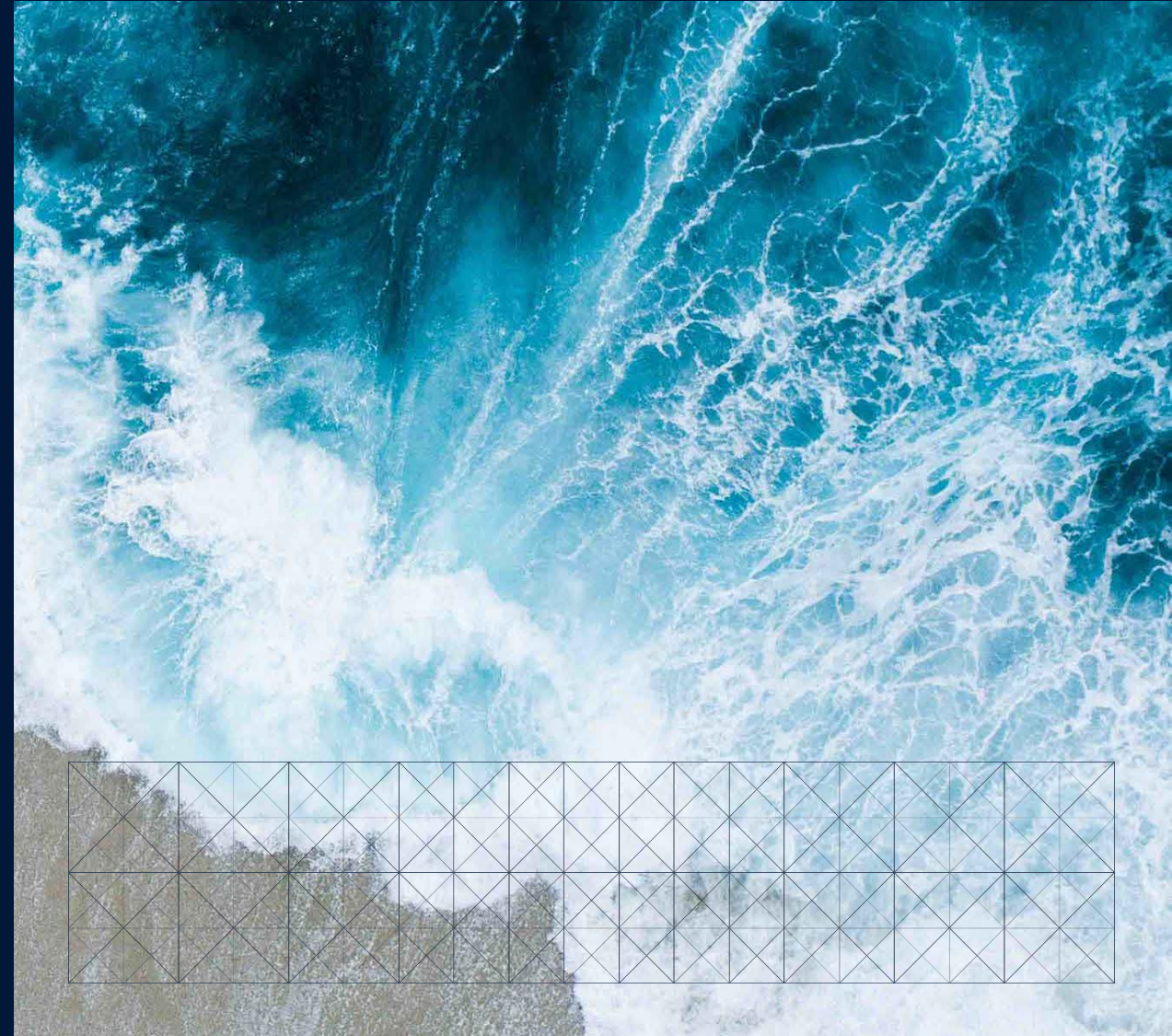
Mapping Cloud

VISUALIZE, ANALYZE AND SHARE
MULTIBEAM DATA IN REAL TIME

09/11/2018



Terje Haga Pedersen | Kongsberg Maritime





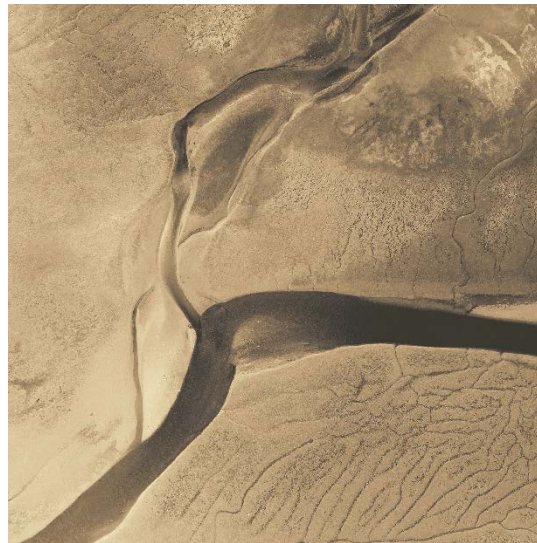
KONGSBERG

KONGSBERG – a diversified company



KONGSBERG MARITIME

Global market leader within offshore, subsea and merchant marine applications



KONGSBERG DEFENCE & AEROSPACE

Modern product portfolio in growing defence and aerospace niches



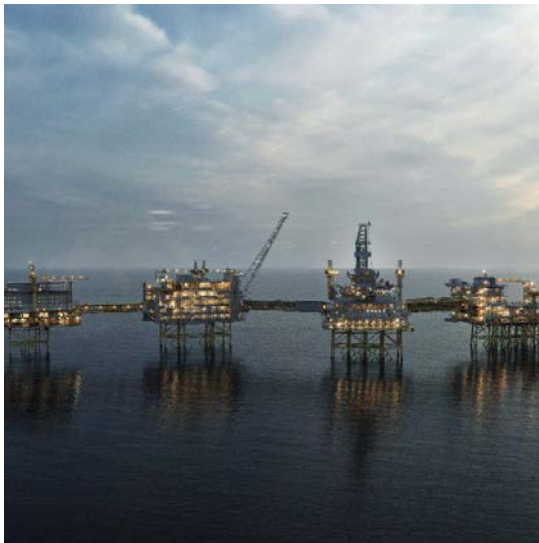
KONGSBERG DIGITAL

Provider of next generation digital solutions to customers within maritime, oil & gas, and renewables & utilities



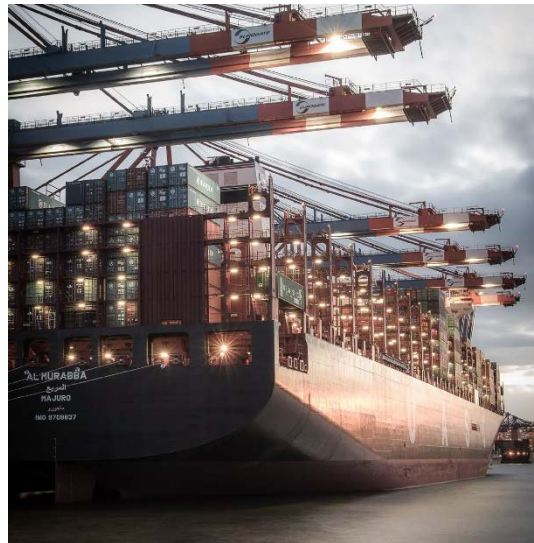
KONGSBERG

Kongsberg Maritime



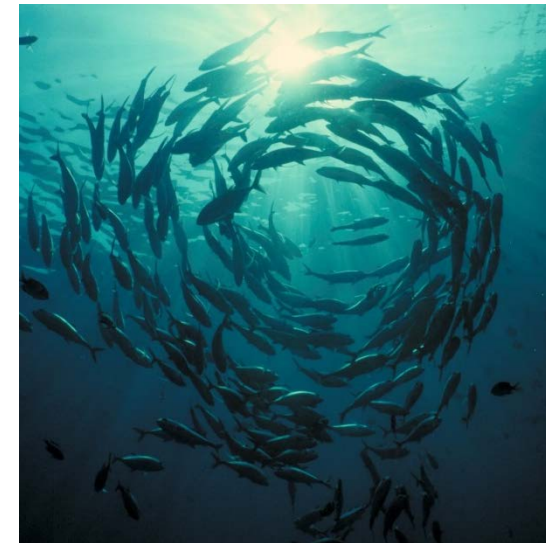
OIL & GAS

Exploration
Development
Production
Decommissioning



SEABORNE TRANSPORTATION

Liquid bulk
Dry bulk
General cargo
Passenger
LNG& LPG



MARINE

Fisheries
Aquaculture
Underwater mapping
Subsea monitoring
Research
Naval



KONGSBERG

Mapping Cloud

Visualize, analyze and share multibeam data in real time

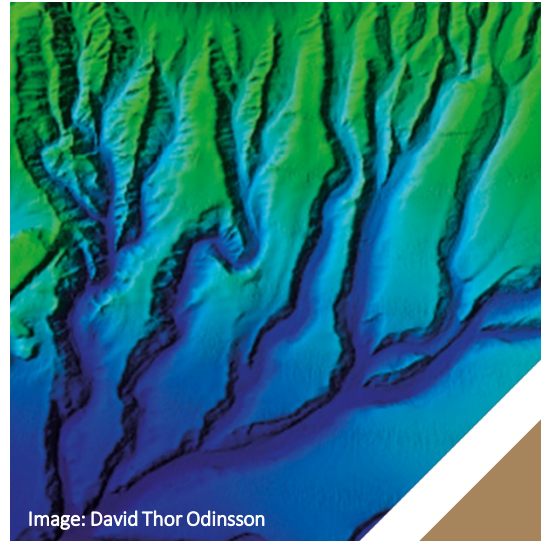




KONGSBERG

AT A GLANCE:

Data storage
Processing
ESRI interfaces



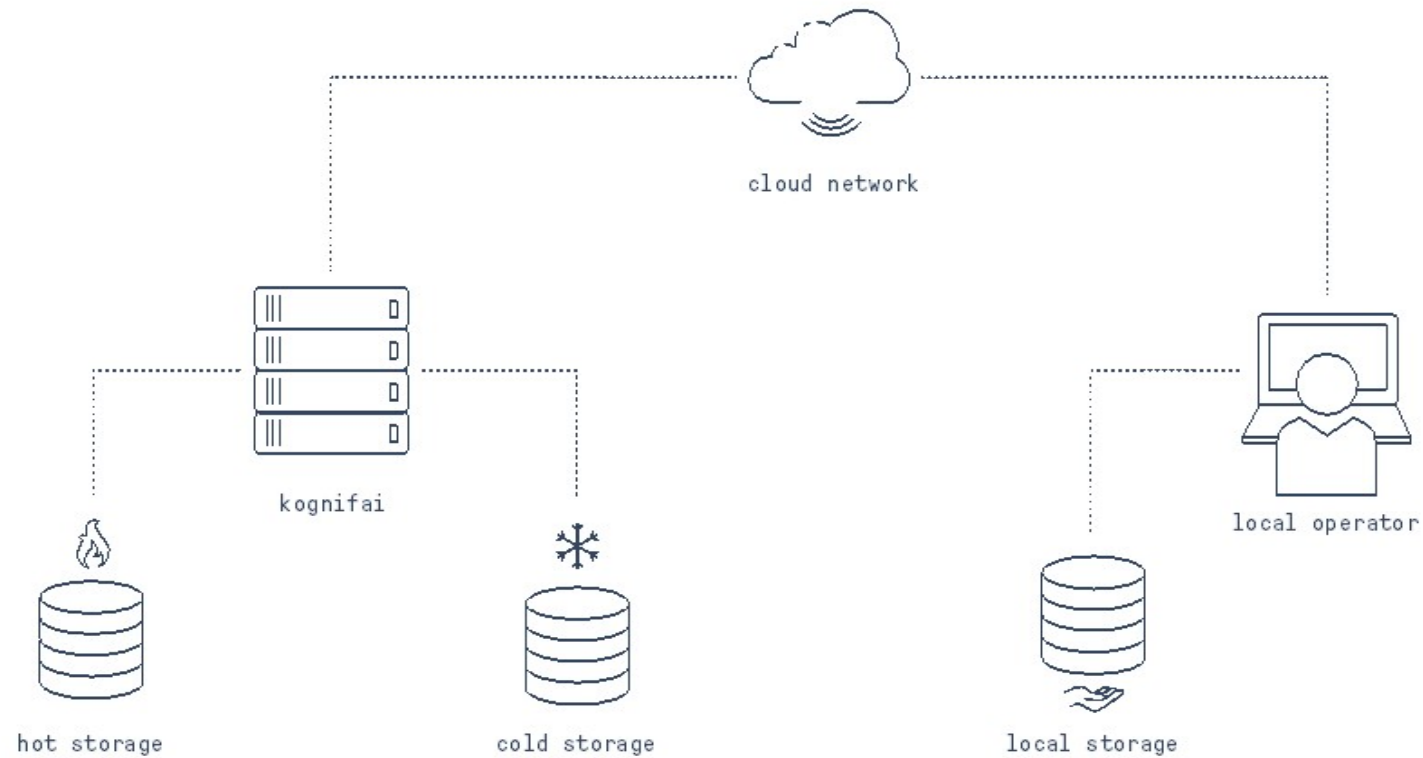
- Easy storage of different types of data in the Cloud
- Upload and distribute real-time data
- Use the Cloud to manage sharing, processing and archiving
- Run your existing applications in a virtual machine environment
- Share results with partners and customers through web browsers



KONGSBERG

Storage

Managing your data in the Cloud





KONGSBERG

Mapping Cloud Storage

File handling in Mapping Cloud



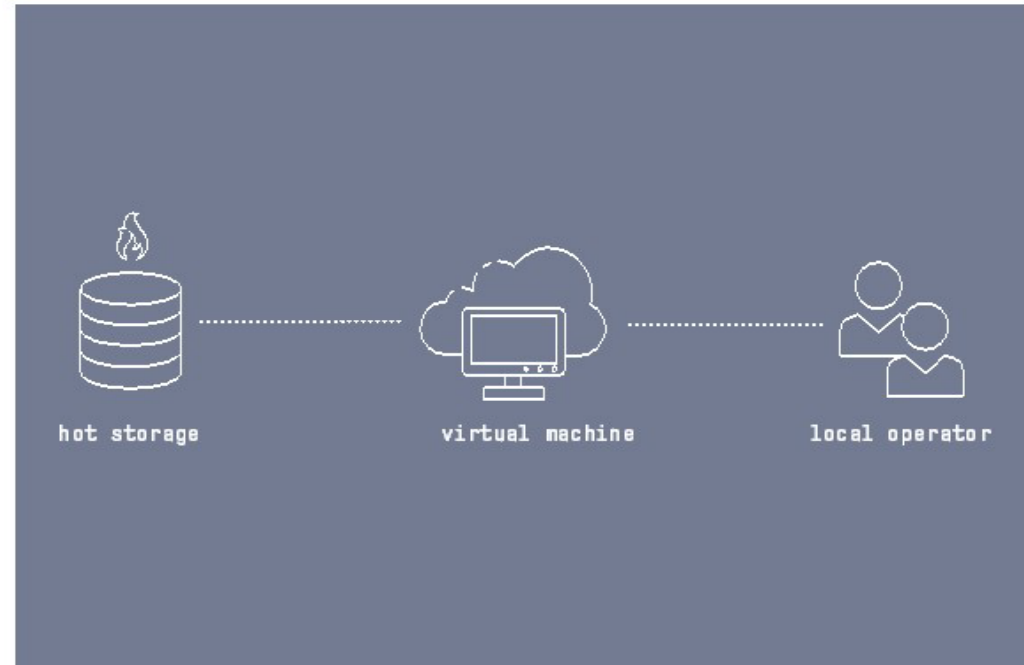
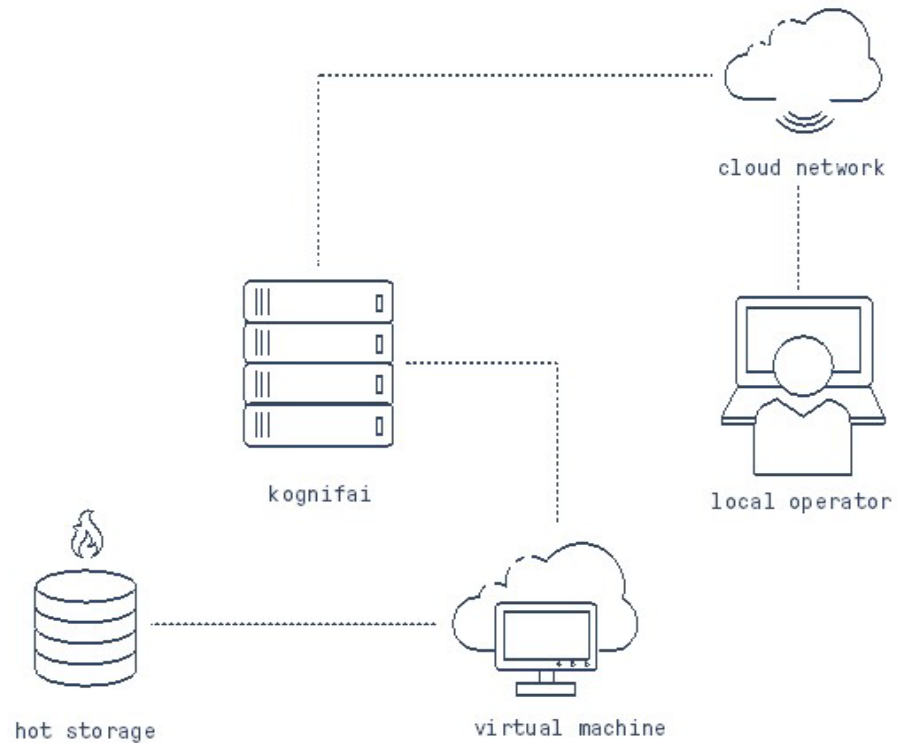
KONGSBERG PROPRIETARY: This document contains KONGSBERG information which is proprietary and confidential. Any disclosure, copying, distribution or use is prohibited if not otherwise explicitly agreed with KONGSBERG in writing. Any authorised reproduction in whole or in part, must include this legend © 2017 KONGSBERG – All rights reserved.



KONGSBERG

Virtual Machine

Your completely customised, personal workspace





KONGSBERG

Mapping Cloud VM

Virtual Machine in Mapping Cloud



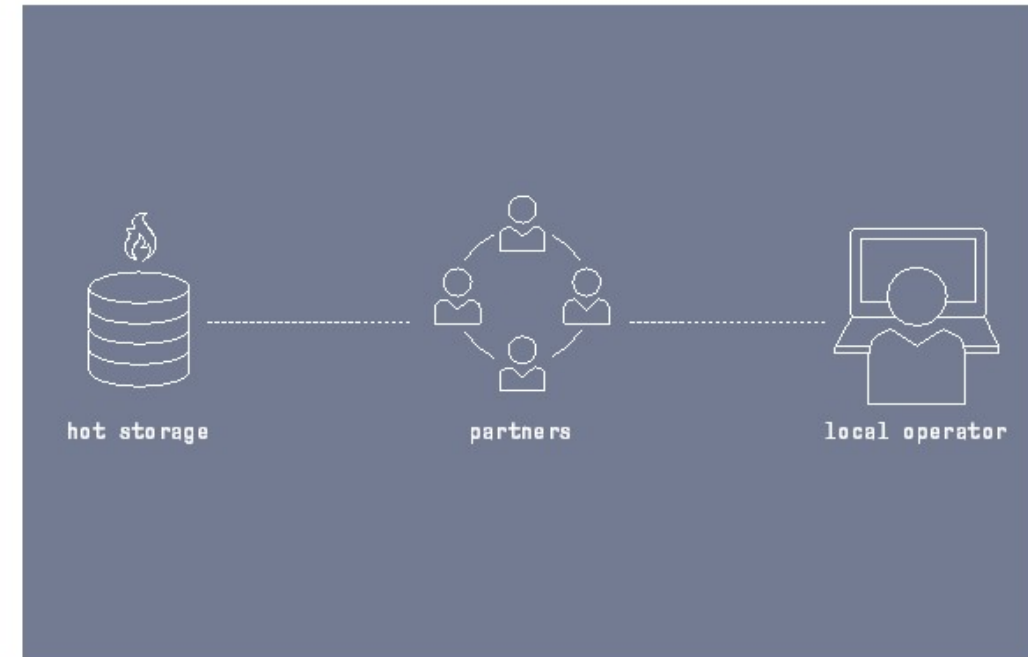
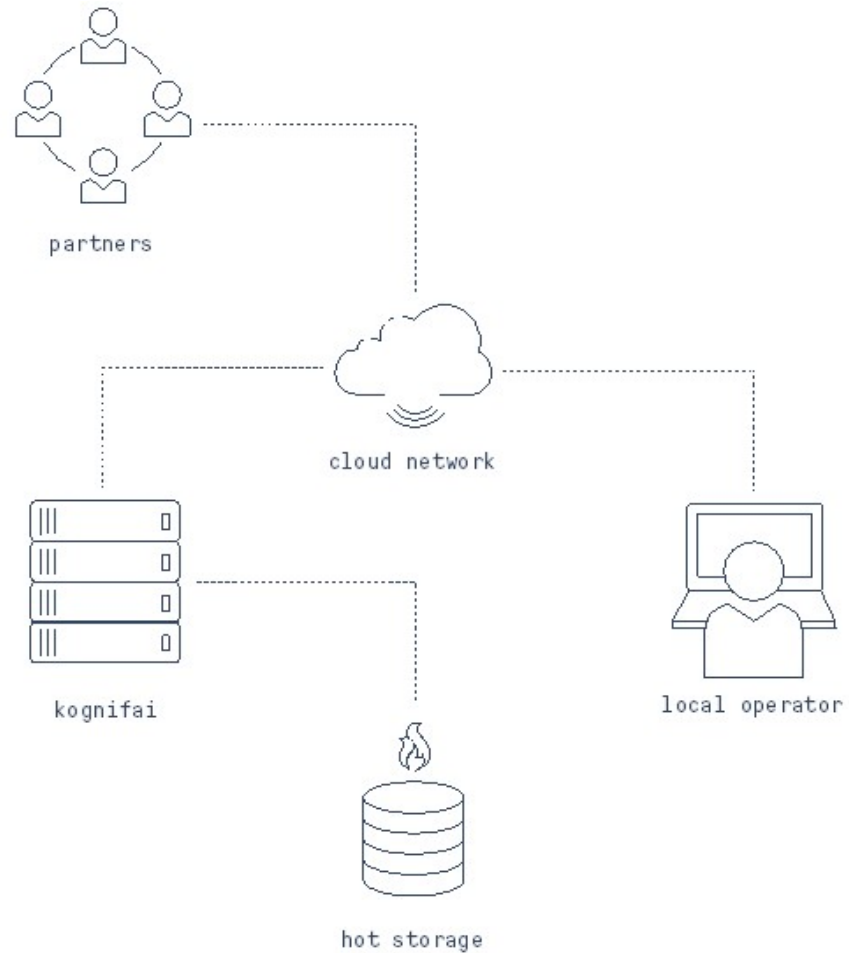
KONGSBERG PROPRIETARY: This document contains KONGSBERG information which is proprietary and confidential. Any disclosure, copying, distribution or use is prohibited if not otherwise explicitly agreed with KONGSBERG in writing. Any authorised reproduction in whole or in part, must include this legend © 2017 KONGSBERG – All rights reserved.



KONGSBERG

Partners

Every cloud can talk to each other in the virtual atmosphere

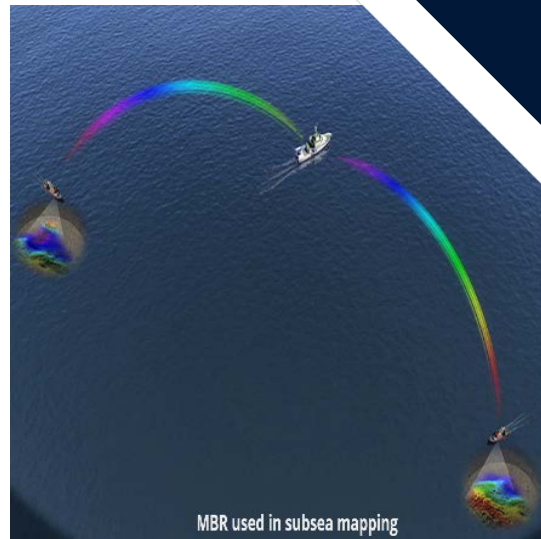
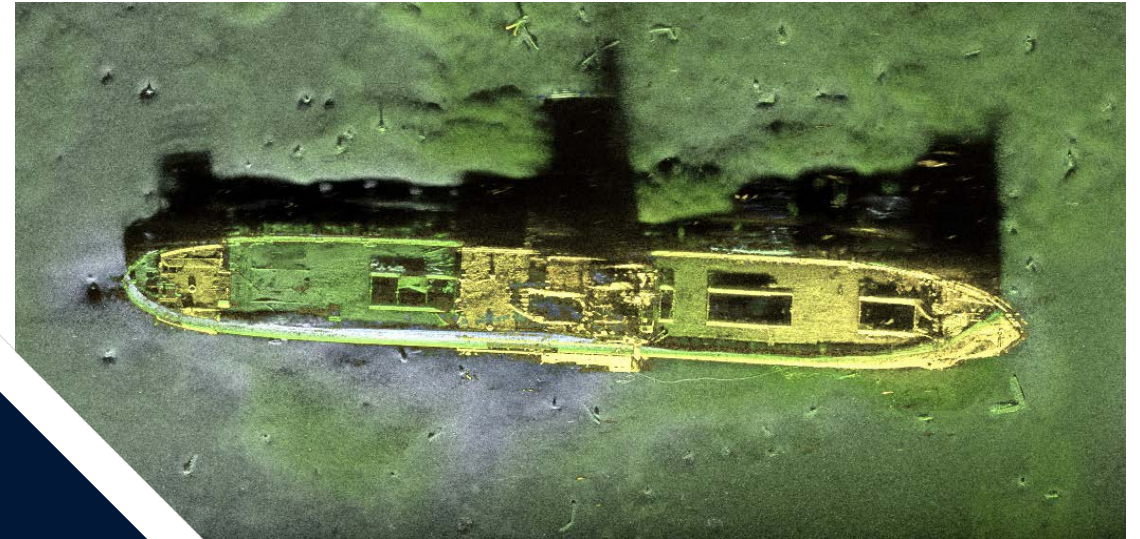




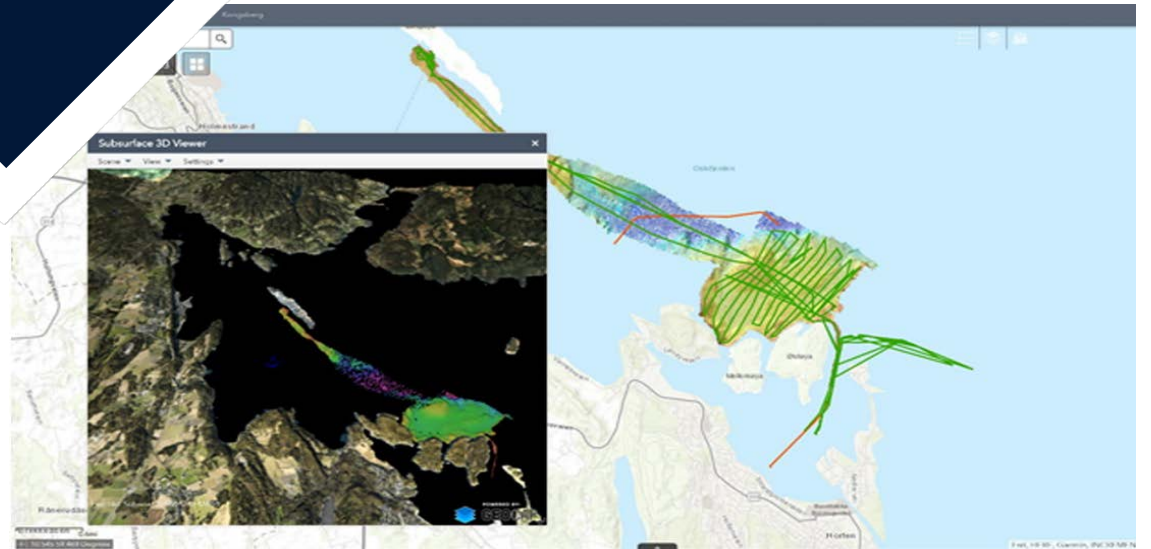
KONGSBERG

Working with partners

Skills and experiences can be shared to build a complete picture.



MBR used in subsea mapping

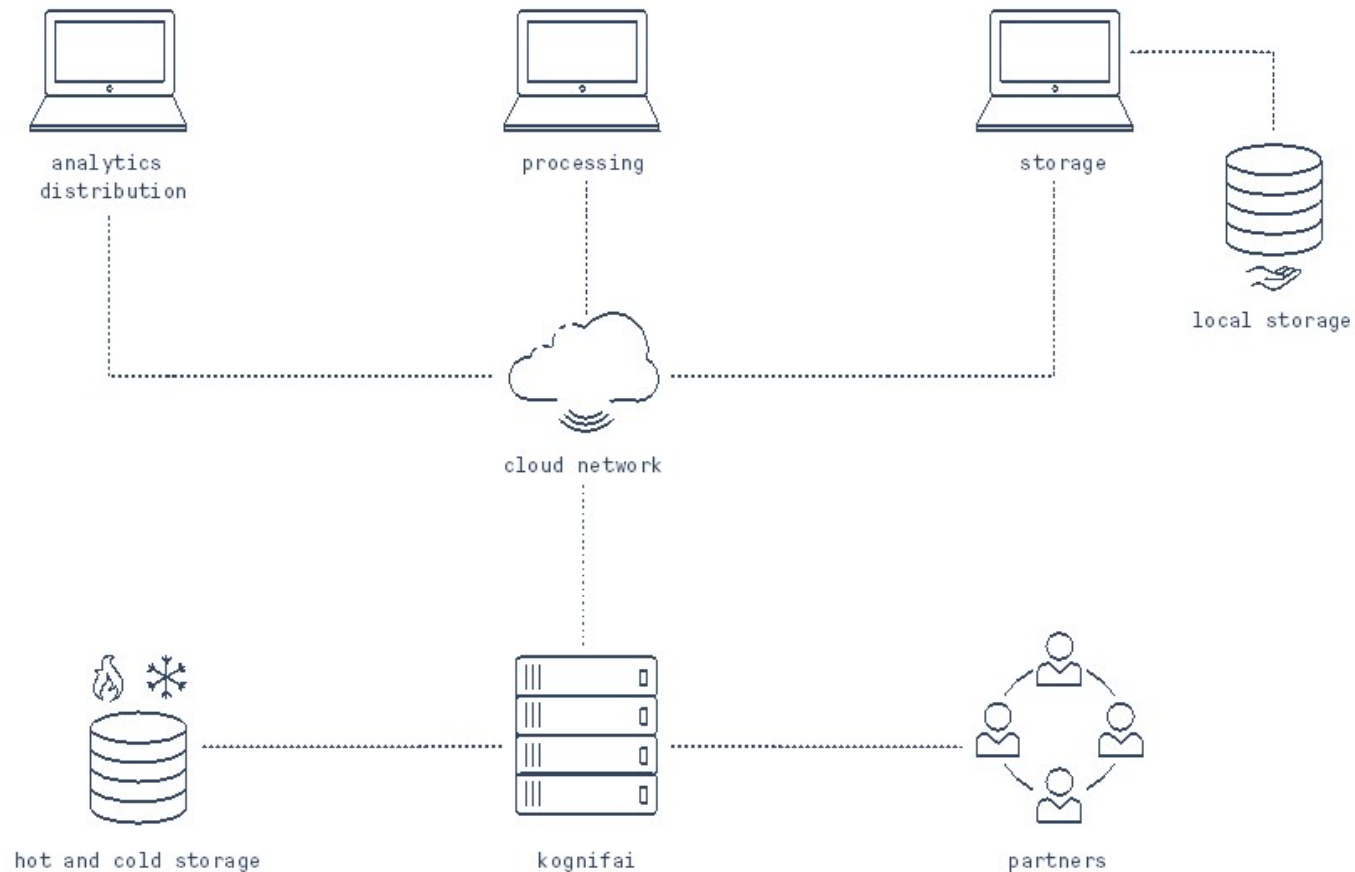




KONGSBERG

Partners

Mapping Cloud provides the freedom to work on shared data, stored and accessible whenever you need it

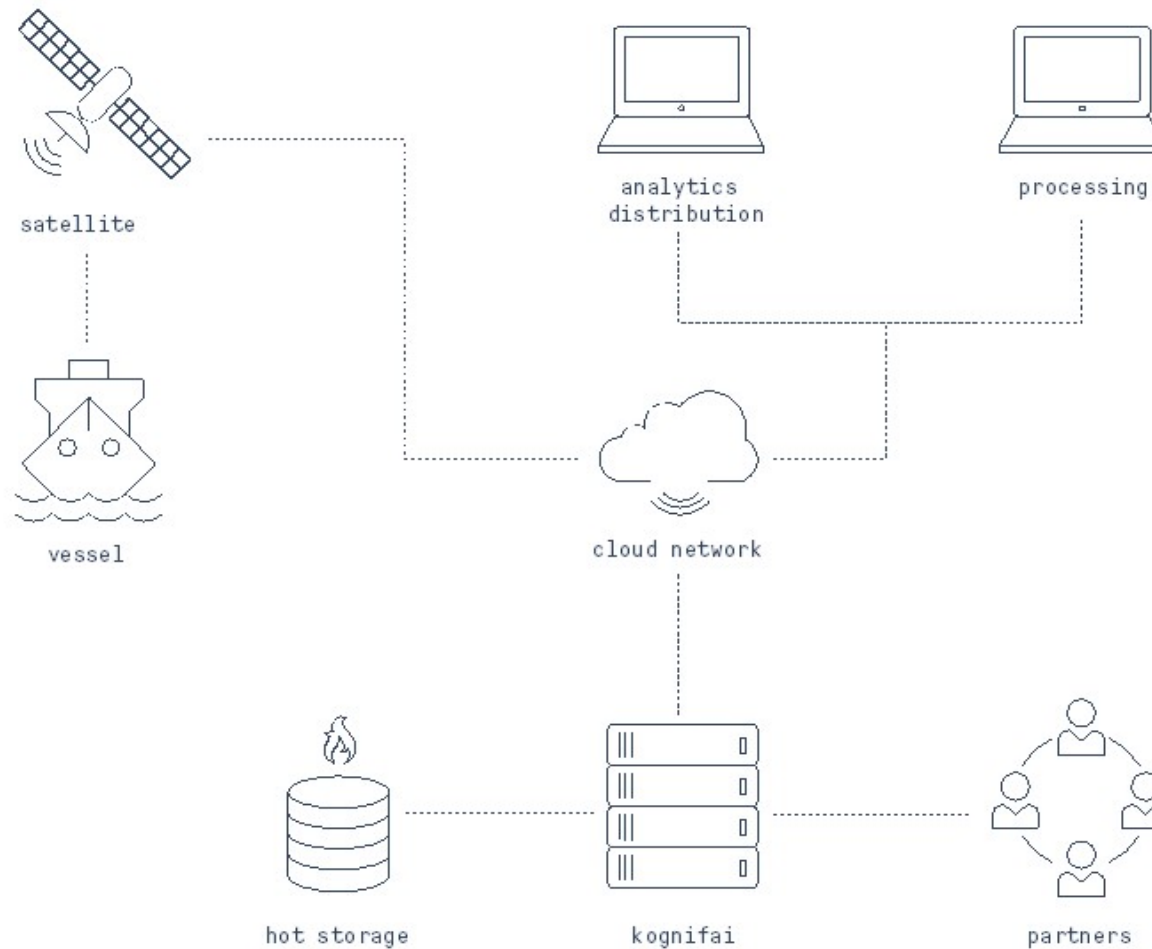




KONGSBERG

Real time

Everyone can work on data in real time - no matter where you are in the world

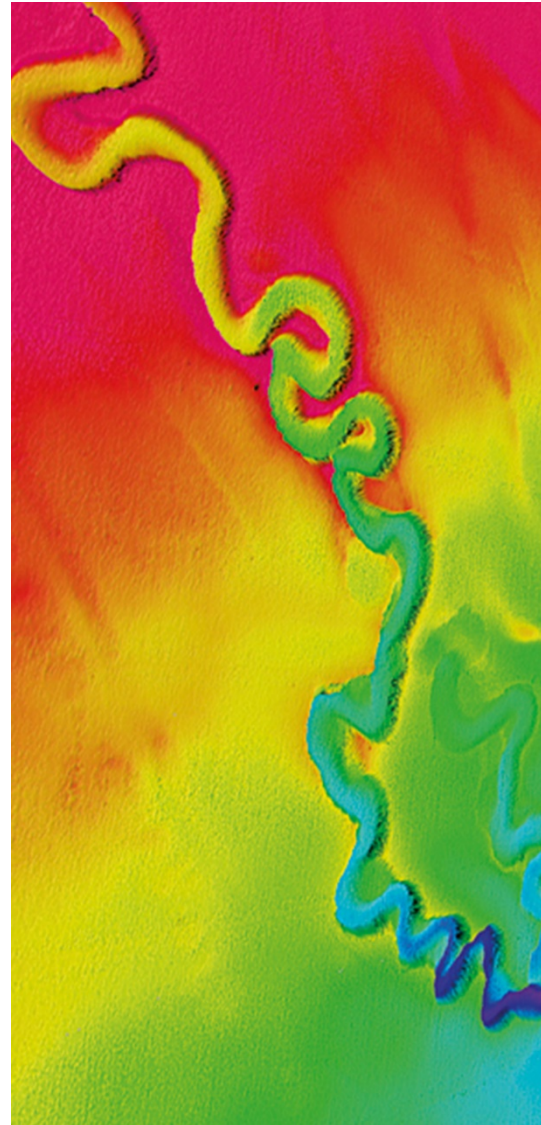




KONGSBERG

Deliverables

- Storage
- Virtual Machine
- Connection to Partners



Processing VM

- Choose preconfigured VMs
- VM is connected to Storage, ready to process data
- Install your own processing software on VM just as a regular PC

Storage

- Download Windows Desktop Application to help copy files from Local Storage to Mapping Cloud
- Storage App to manage Hot/Cold storage
- File management

Partners

- ESRI
- Earth Analytic
- Geocap





KONGSBERG

Partners

Boost Productivity: Kongsberg Maritime assists in configuring the connection between storage and partners for seamless integration.



ESRI

The global leader in spatial analytics



EARTH ANALYTIC

Specialists in science-based geospatial analysis and systems architecture design



GEOCAP

Specialists in geographical information and visualization.

Mapping Cloud

Near future development

- Improve sharing capabilities
 - Different data density
 - Integrated User management
 - Realtime operations
 - Generic software for realtime upload of multibeam data: DTM, xyz, metadata
- Software Development Kit
 - Provide training for developers
- App-store
 - Let everyone make applications



KONGSBERG

Thank you

Terje.haga.pedersen@km.kongsberg.com

