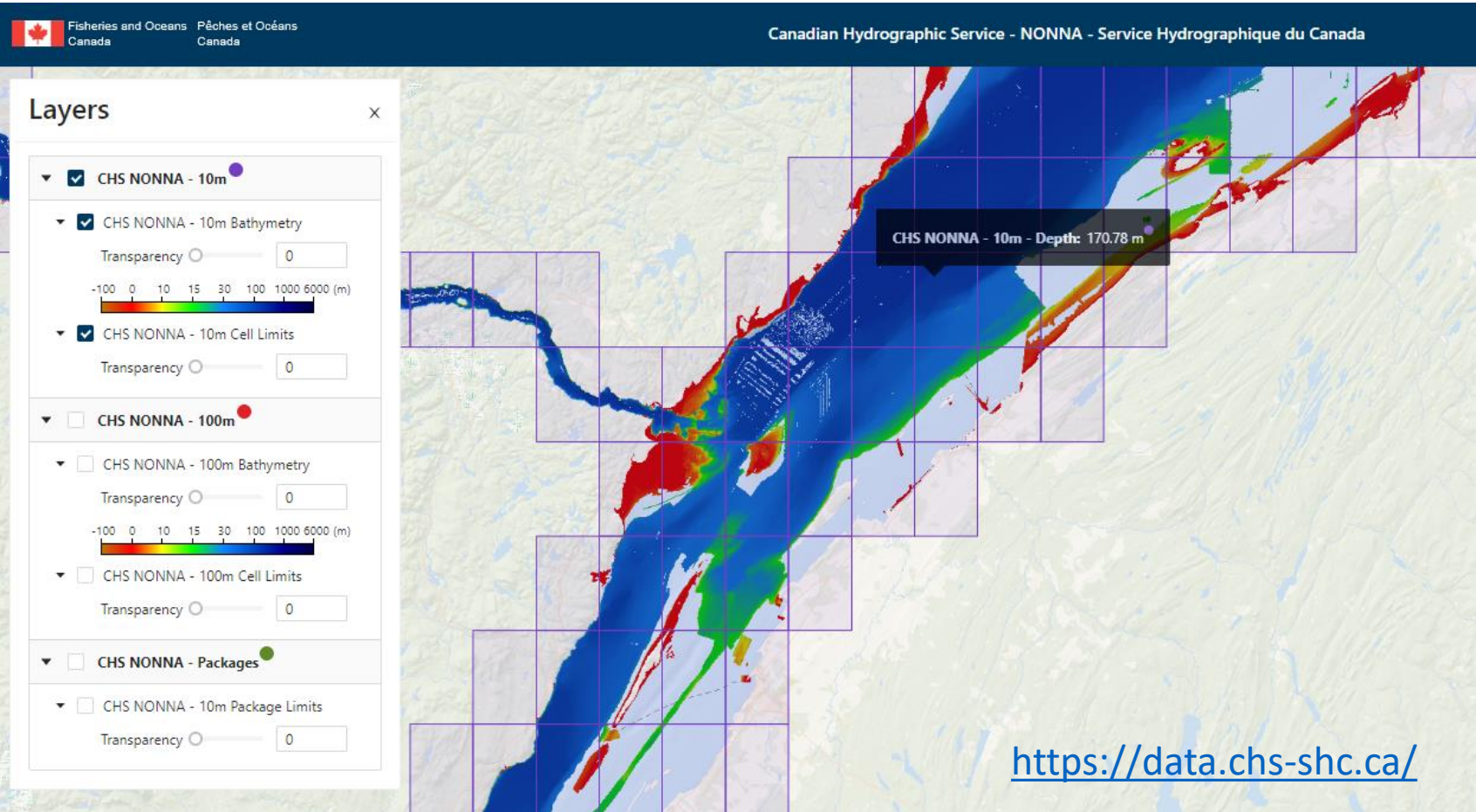


Contribute to Seabed2030 through CARIS Cloud's Bathymetry Data Service



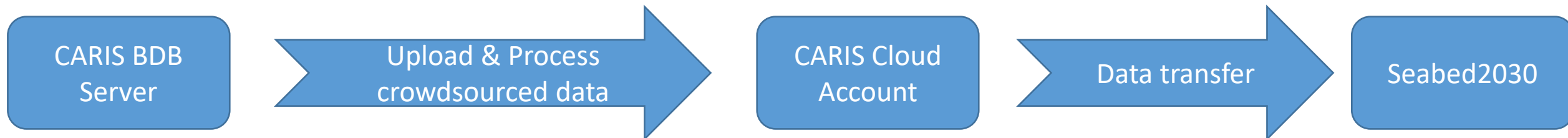
July 2023



Teledyne Geospatial
Imaging Solutions for Land and Water

Overview

- CARIS Cloud can be the link between stakeholders interested in sharing their data and Seabed2030.
- Selected bathymetric data can be uploaded, processed and transferred to Seabed2030 data holdings automatically at specifications configured by the user.
- Most Hydrographic Offices in the region have implemented CARIS Bathy DataBASE



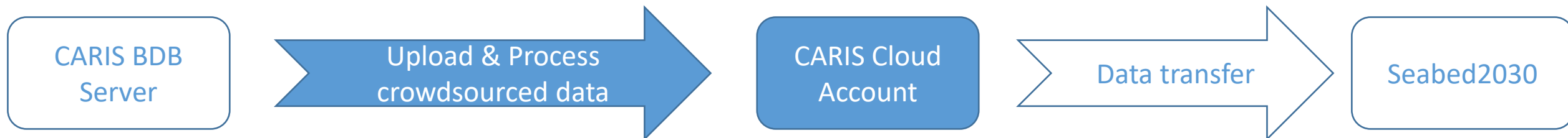
BDB Server 5.4

- BDB Server 5.4 with connection to CARIS Cloud account to schedule and configure data pipeline to automatically upload and process BDB data and make it available to CARIS Cloud users
 - Select gridded data to upload
 - Configure processes to execute when uploading data. For example:
 - Generate gridded tile products with resolution, extent and formats (CSAR, ASCII, BAG, S-102, GeoTIF) specified by users
 - Update raster mosaic distributed as OGC services (WMS, WMTS)



CARIS Cloud with Bathymetry Data Service app

- Cloud hosted solution to upload & process, manage, disseminate hydrospatial data and products
- Several applications can be activated, notably Bathymetry Data Service to enable gridded bathymetry pipeline
 - REST API to define and execute jobs (chains of processes)



Transfer to Seabed 2030

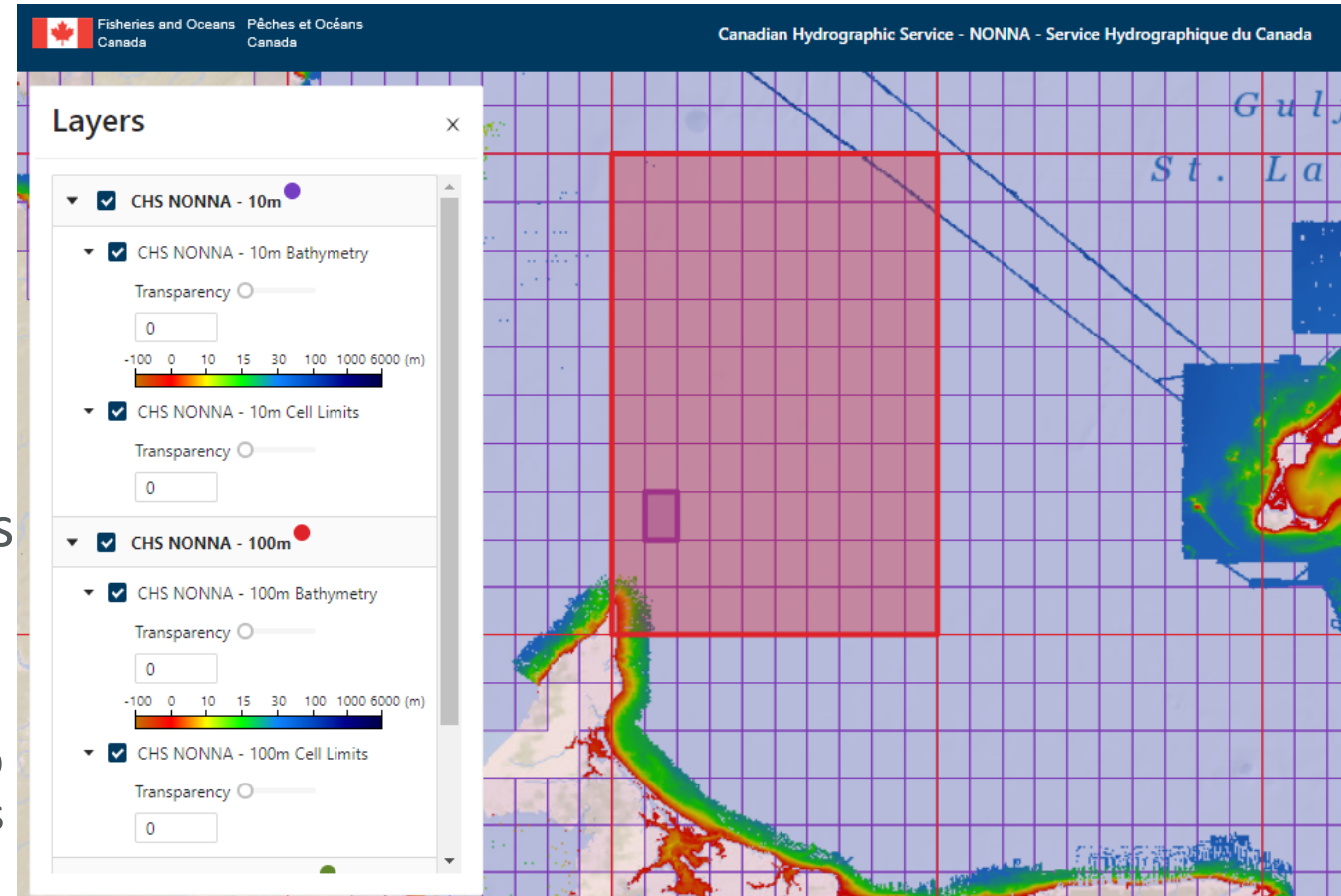
- CARIS Cloud has a modern REST API, which can be used by other systems to receive notifications when new data is available and to download the data.
- CARIS Cloud also has a simple and customizable Discovery Viewer to find and download data
 - CHS NONNA portal is an example: <https://data.chs-shc.ca/dashboard/map>



Bathy Data Service for MSDI & Data Sharing

- Access datasets through APIs, **OGC web services** in desktop and web apps
- Reduce ad-hoc requests for data by serving prepared data products to stakeholders
- Support multiple datasets for sharing (ASCII, CSAR, BAG, GeoTIF)
- Reduces unwanted access to production DBs
- Easily configure different products for different stakeholder groups
 - Supply access to data in portals, web and desktop applications using industry standard OGC services
 - Use any standards-based viewer
- Example: CHS NONNA

<https://data.chs-shc.ca/>



Reproduced with the permission of the Canadian Hydrographic Service

Questions?