



Fiji Hydrographic Service

“Charting Fiji’s Waters since 1970 ”

REPUBLIC OF THE FIJI ISLANDS



REPUBLIC OF FIJI ISLANDS

- ❑ is an island country part of Oceania in the South Pacific Ocean
- ❑ Fiji consists of an archipelago of more than 330 islands & 500 islets
- ❑ Gained independence from Britain in 1975
- ❑ **Capital:** Suva
- ❑ **Population:** 926,200
- ❑ **Languages:** Fijian, English, Fiji Hindi, Rotuman



SCOPE



```
graph LR; 1[1] --- B[Background]; 2[2] --- AR[Area of Responsibility]; 3[3] --- C[Capability]; 4[4] --- WF[Way forward]; 5[5] --- Con[Conclusion];
```

1

Background

2

Area of Responsibility

3

Capability

4

Way forward

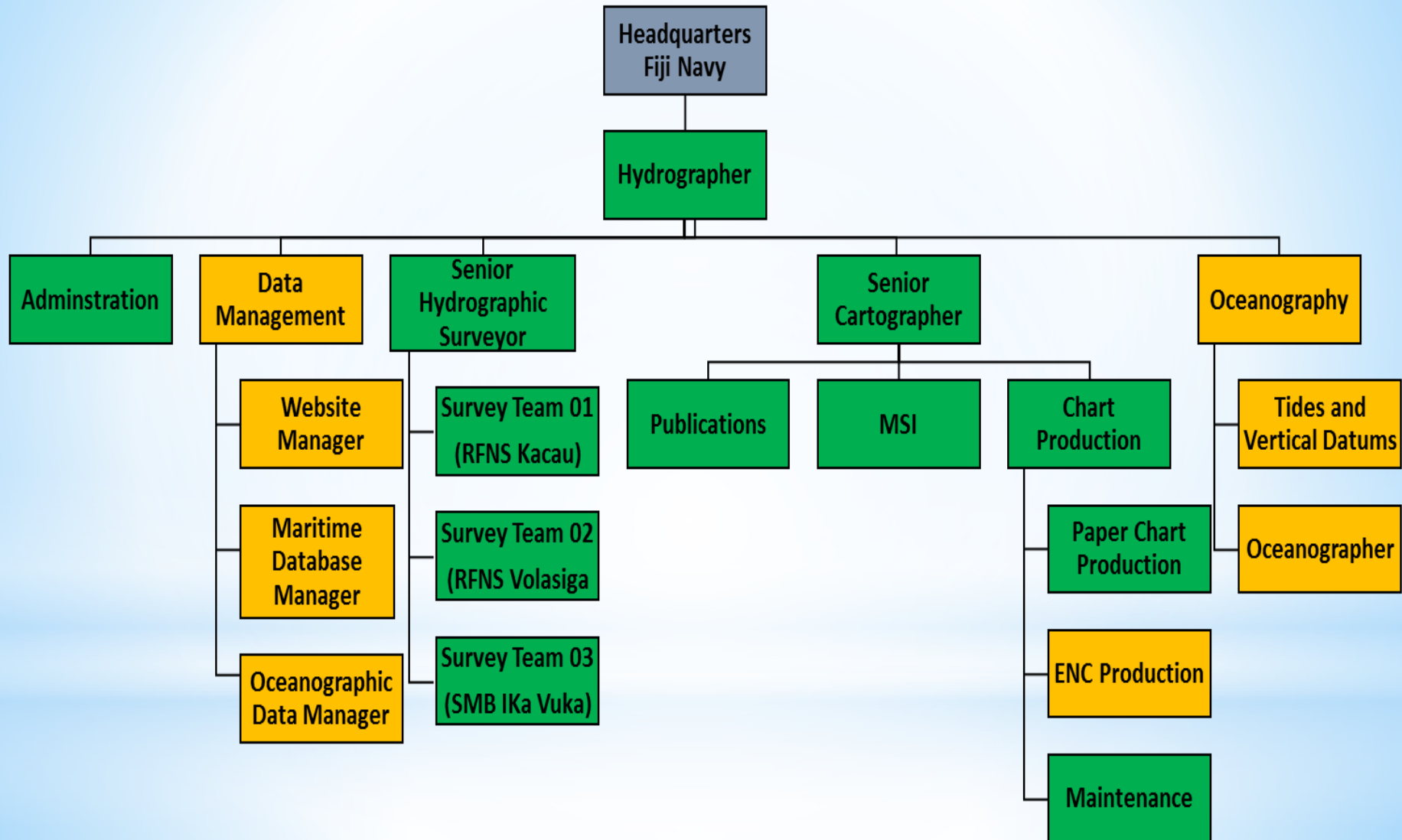
5

Conclusion

BACKGROUND

- Established in 1970 after the United Nations study on Fiji's maritime transport system towards the end of the late 1960s.
- Published its first chart in 1981 (F Chart Folio)
- Became a member of the IHO in 1982
- Member of the Southwest Pacific Hydrographic Commission
- First local Chief Hydrographer 1990
- UKHO is the Primary Charting Authority

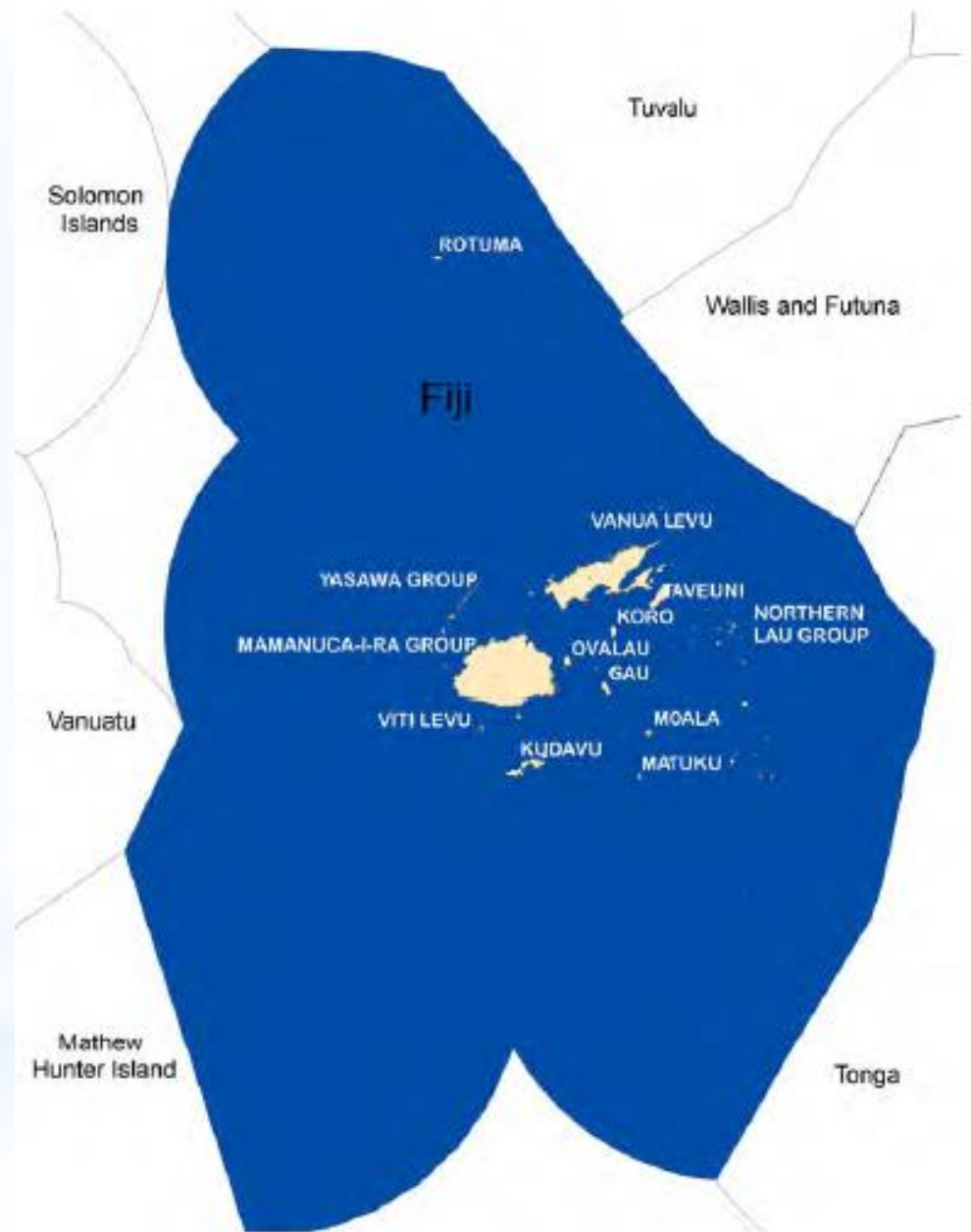
ORGANISATIONAL STRUCTURE



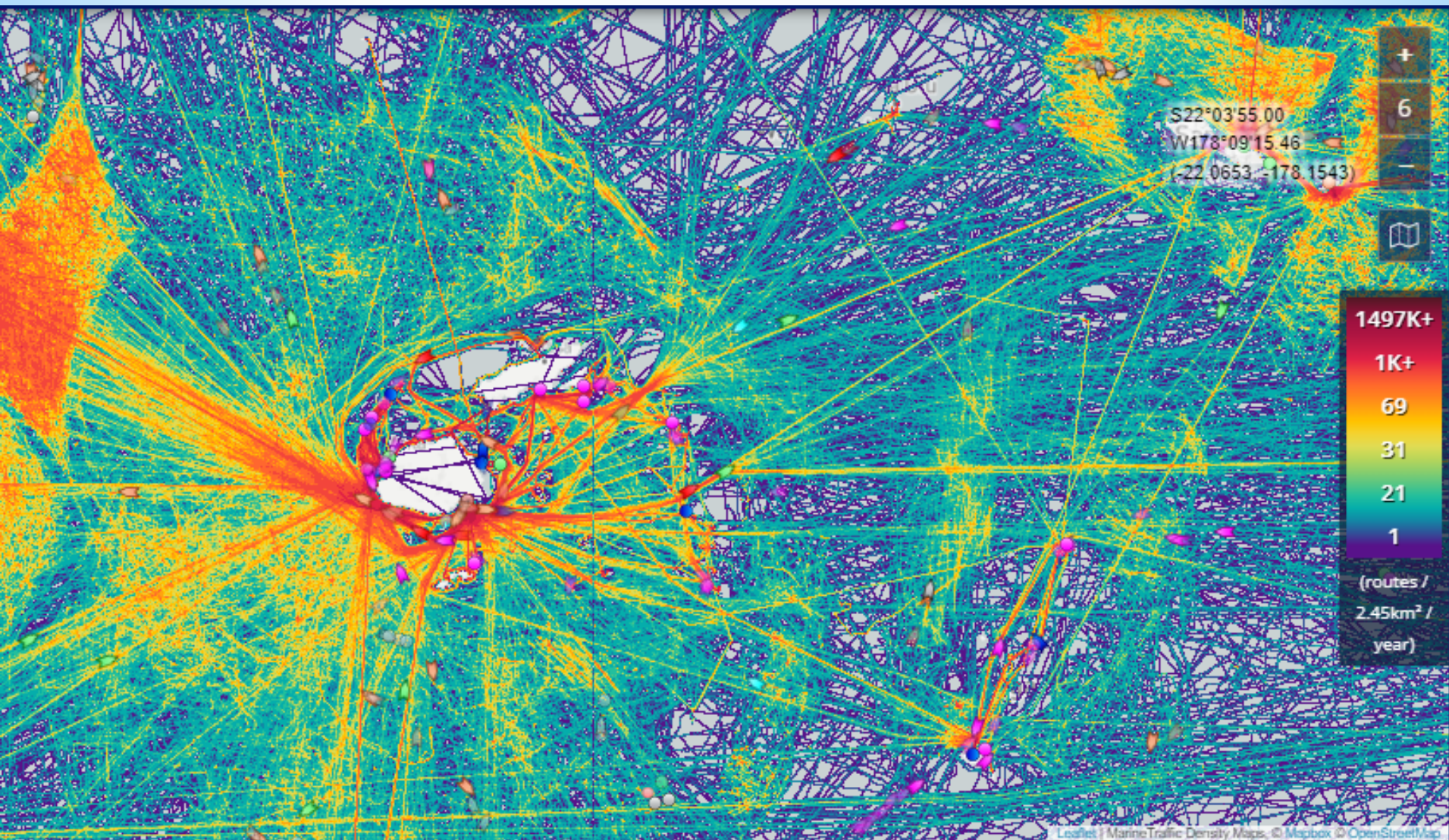
Area of Responsibility

EEZ covering almost 1.3 million square meters of the Pacific Ocean

Fiji's total land area is 18,333 square kilometres



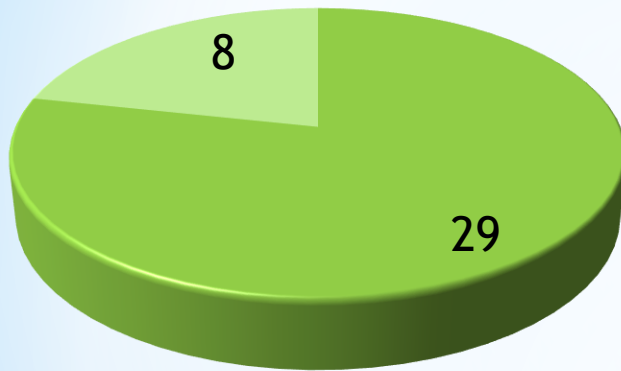
SHIPPING NETWORK



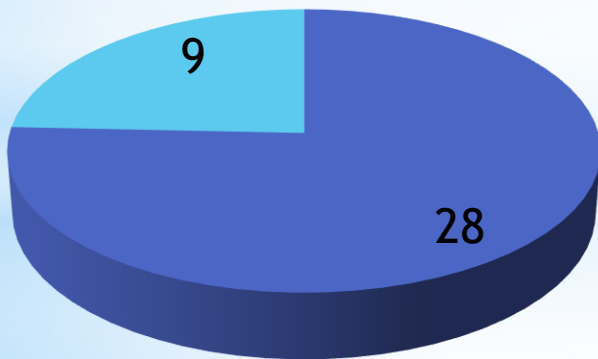
Extracted from Marine Traffic Density Map (2021,2022)



The Team:



- Surveyors
- Cartographers

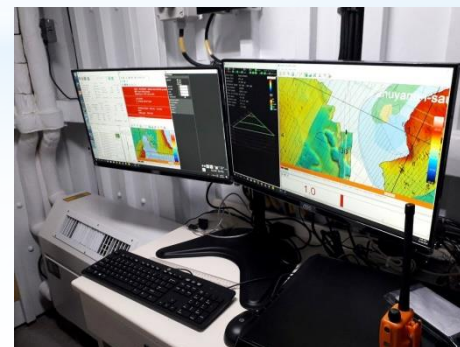


- Male
- Female



RFNS Kacau

1. **Displacement:** 300 tonne
2. **Date Launched:** 2018
3. **Surveyors:** 06
4. **Hydrographic Survey Equipments:**
Hull mounted Norbit Multibeam System,
Positioning / IMU, Towed Side Scan
Sonar, Sub Bottom Profiler, A Winch
Frame , Sound Velocity Profiler
5. **Types of Surveys Conducted:**
 - National charting project



RFNS Volasiga

1. **Displacement:** 72 tonnes
2. **Date Launched:** 2019
3. **Surveyors:** 08
4. **Hydrographic Survey Equipment:**
Kongsberg EM 2040c Multibeam Echo sounder,
Positioning System / IMU, Sound Velocity Profiler,
ADCP, Side Scan Sonar, Side Scan Sonar Winch,
Multi-purpose Winch, J-Frame



1. **Types of Surveys Conducted:**
 - National charting project



SMB Ikavua

1. Displacement: 3 tonne

2. Date Launched: 2018

3. Surveyors: 7

4. Hydrographic Survey Equipment:

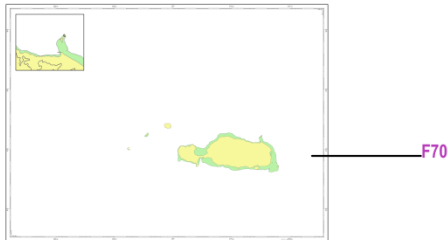
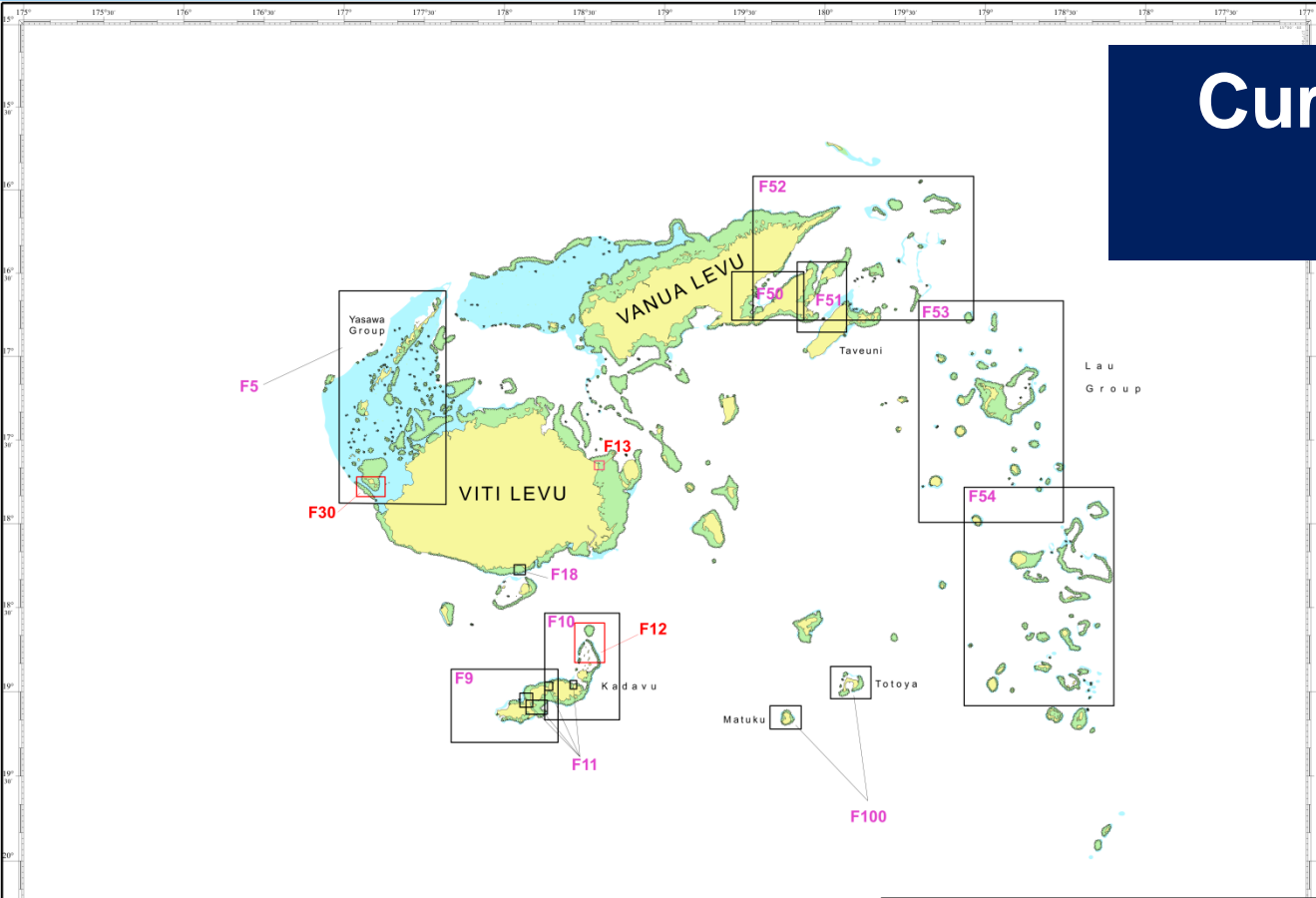
Multibeam Echo sounder (R2 Sonic 2020),
Multibeam Echo sounder (R2 Sonic 2024) ,
Single beam Echo sounder (Odom MKIII),

5. Types of Surveys Conducted:

National charting project



Current Status of Charting



Fiji (L)

Nautical charting / Cartographie marine / Cartografía náutica

Coverage of charts published Couverture des cartes publiées Cobertura de cartas publicadas			Offshore passage Navigation au large Pasaje offshore			Landfall and Coastal passage Atterrissage et navigation côtière Recalada y Pasaje costero			Approaches and Ports Approches et ports Aproches y puertos		
<div> <div></div> Covered by INT or other paper charts meeting S-4 Couvert par des cartes papier INT ou autres conformes S-4 Cubiertas por cartas de papel INT o otras cumpliendo S-4 </div>			100	100	100	100	100	100	100	100	100
<div> <div></div> Covered by RNC meeting S-61 Couvert par des RNC conformes S-61 Cubiertas por RNC cumpliendo S-61 </div>											
<div> <div></div> Covered by ENC meeting S-57 Couvert par des ENC conformes S-57 Cubiertas por ENC cumpliendo S-57 </div>											
<div> <div></div> Paper charts showing depth in meters Cartes papier avec les profondeurs en mètres Cartas de papel con profundidades en metros </div>			100 %			100 %			100 %		
<div> <div></div> Paper charts referenced to a satellite datum Cartes papier rapportées à un système géodésique satellitaire Cartas de papel referidas a un datum satelital </div>			100 %			100 %			100 %		
<div> <div></div> Data source Source des données Origen de los datos </div>											

- Notes
Notes
Notas
1. Data provided by UK.
 2. All UK coverage now metric and WGS84



DATA HOLDINGS



☐ Survey Sheets



☐ Digital Formats

Document No.	Scale	Title and Particulars of Document	Authority	Original Copy	Film Positive	Dye Copy	Date
A 1133	1:24,000 m = 3.0 d = 6.1	- REEF BETWEEN OVALAU AND MOTURIKI - FORST REEF - FIXING OF	BRISK		√		1867
A 3183	1:81,000 m = 0.9	UEA, UVEA OR WALLIS ISLAND	LT. MOURILYAN		√		1872
A 3264	d = 6.1	YASAWA GROUP - ETHEL REEFS	ETHEL		√		1872
A 3462	1:23,000 m = 3.1	UEA - ALLIER BAY	"		√		1871
A 3642	1:24,000 m = 2.94	KADAVU - GALOA HARBOUR - ADDITIONS	HMS PEARL		√		1873



WAY FORWARD

- ❑ Hydrographic Strategic Plan
- ❑ Formation of the National Hydrographic Coordinating Committee
- ❑ Restructure of FHO
 - Hydrography
 - Cartography
 - Oceanography
 - Data Management
- ❑ FHO move to Maritime Essential Services Centre
- ❑ Completion of Chart modernization Project
- ❑ Digitisation of Survey Sheets
- ❑ Member of IC-ENC
- ❑ Collaborative efforts with regional partners





Gracias
Thank you
Vinaka