

SEABED 2030 MAPPING INITIATIVE

THE CHALLENGE

To inspire ocean mapping for the benefit of people and the planet.

The Nippon Foundation-GEBCO Seabed 2030 Project (Seabed 2030) is a pioneering global initiative accelerating ocean mapping efforts. We are an open community where industry, governments, researchers, philanthropists, NGOs, and civil society work together to achieve a complete map of the entire seabed by 2030, advancing understanding and sustainable management of our ocean.

Market research shows: 88% of the Seabed 2030 Community state “It is very important that global ocean seabed mapping coverage is acquired and available in this decade (by 2030).”

WHAT IS SEABED MAPPING?

Seabed mapping is the study and visual representation of the ocean floor’s shape, features, and habitats. It uses technologies like sonar, multibeam echosounders, and underwater vehicles to measure depth, identify objects, and investigate underwater terrain. These maps support various applications, such as ship navigation, resource management, scientific research, and environmental conservation.

WHAT DOES SEABED MAPPING OFFER?

Seabed mapping enables global environmental, social, and economic benefit. Examples include:

- **Improved navigation:** Seabed maps enable governments to establish safer and more efficient shipping routes, reducing the risk of accidents and delays.
- **Resource management:** Detailed maps help identify and sustainably manage valuable resources like oil, gas, minerals, and fisheries.
- **Environmental protection:** Seabed mapping supports the monitoring and conservation of vulnerable marine habitats and ecosystems.
- **Disaster preparedness:** Accurate maps of the ocean floor contribute to better understanding of natural hazards, like tsunamis and coastal flooding, allowing for better preparedness and response.
- **Scientific research:** Governments can use seabed mapping to support research in oceanography, geology, and marine biology, driving innovation and discovery in these fields.

Market research shows: 70% of the Seabed 2030 Community state: “Seabed mapping data has an important role to play in informing decisions, and enabling economic value from ocean/marine resources.”

Market research shows: “80% of the Seabed 2030 Community state: “Seabed mapping data has an important role to play as a key input for marine science”



Photo: Schmidt Ocean Institute

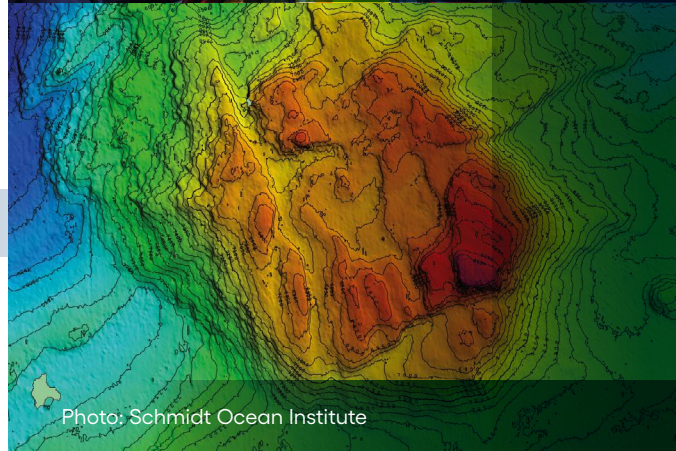


Photo: Schmidt Ocean Institute

ECONOMIC IMPACT SECTORS

Established Sectors

- Government Policy
- Marine and Coastal Fisheries and Aquaculture
- Marine and Coastal Tourism
- Shipping and Ports
- Cable and Pipelines
- Energy Resources Management
- Defence and Maritime Affairs (Safety and Security)

Science/Emerging Sectors

- Ocean Discovery
- Marine Science and Research
- Marine and Coastal Ecosystem Services, including Marine Biodiversity
- Climate Change
- Disaster Management and Disaster Risk Resilience
- Renewable Energy (Off-shore wind, solar, tidal and wave)

Other Sectors

- Hydrographic / Oceanographic Survey
- Marine and Coastal Development
- Biotechnology, inc. Pharma Industries
- Human Capital

TAILORED USE CASES EVIDENCING SEABED 2030 MAPPING INITIATIVE BENEFIT

Seabed 2030 is developing a set of use cases evidencing seabed mapping benefits, including:

Policy use cases include International Marine, Sovereign Rights and National Policy development and obligations.

Industry use cases include Resources and Energy, Cables and Pipelines, Fisheries and Aquaculture, and wider socio-economic Blue Economy sectors.

Scientific research use cases include Ocean Discovery and Exploration, Marine Science and Research, Environment and Climate Change.

Market Research shows: 82% of Seabed Mapping Community stated: The Use Cases proposed by Seabed 2030 strongly evidence seabed mapping benefits and socio-economic value.



GLOBAL SUPPORT TO SEABED 2030 MISSION

Everyone with a link to the ocean can play a powerful role in helping to map the entire seafloor by the end of the decade:

Governments: Help to unleash the power of the Blue Economy by contributing hidden data and raising awareness of the mission.

Research: Support a key UN Ocean Decade action by contributing your data and sharing your insights on the intrinsic value of seabed mapping.

NGOS: Advocate for ocean floor mapping to promote conservation and safeguard the future of the planet.

Industry: Supercharge your ESG commitments and support healthy marine ecosystems by contributing essential data.

Individuals: Become an ocean champion by collecting data for the global map and helping to recruit more people to the mission.

Philanthropists: Support ocean mapping efforts by funding expeditions and technological innovation.

EXECUTIVE STATEMENT OF STRATEGIC FIT/ALIGNMENT 'VALUE STATEMENT'

Seabed 2030 is a collaborative project between the Nippon Foundation of Japan and the General Bathymetric Chart of the Oceans (GEBCO). It aims to bring together all available bathymetric data to produce the definitive map of the world ocean floor by 2030 and make it available to all.

Seabed 2030-collated data is fundamental to our understanding and sustainable use of our ocean. This data:

- Enhances our understanding of the World's Ocean and our subsea world;
- Underpins a wide range of Ocean and Marine Scientific Research;
- Supports our preparation for and mitigation of global and regional scale crisis, including climate change, sea level rise, and volcano, tsunami, and tide surge flood disaster events; and
- Enables socio-economic development and growth of the Blue Economy.

In 2015, the WWF assessed the value of key Ocean assets at over US\$24 trillion, with two-thirds of that based on assets that require healthy productive oceans. The total global value of the Blue Economy is currently around US\$2.5 Trillion and is predicted to rise to US\$3 Trillion by 2030 and employ 40 million people. [Source OECD, 2016. The Ocean Economy in 2030].

