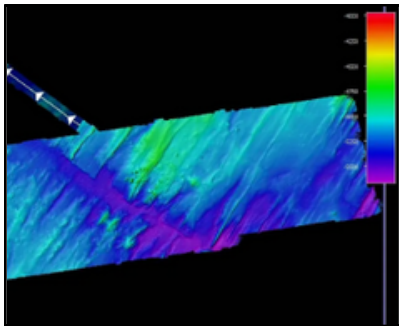


What to Contribute?

The Seabed 2030 Team can work with multiple formats and types of data files that contain bathymetric measurements.

Types of Data

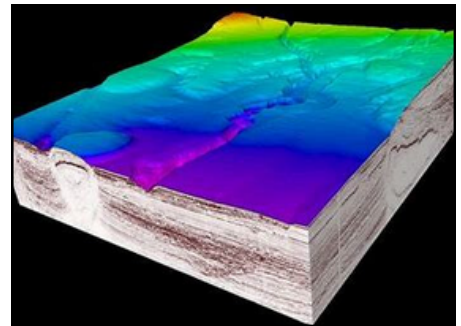
Multibeam



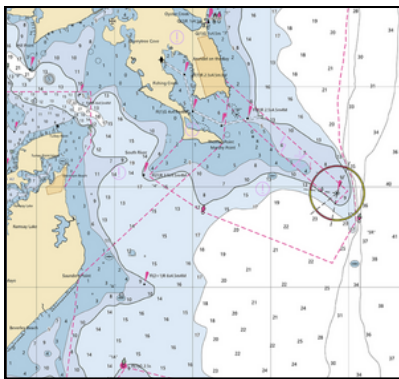
Singlebeam



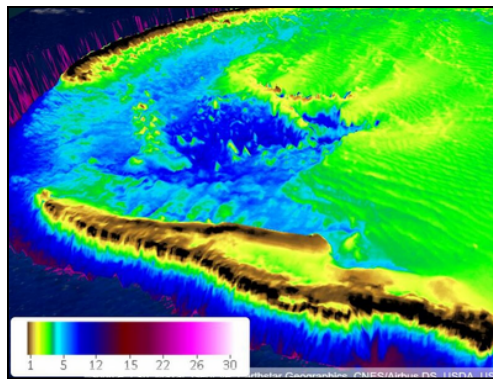
Seismic



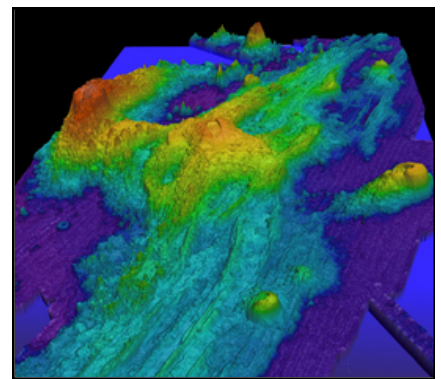
Electronical Nautical Charts (ENCs)



Satellite Derived Bathymetry (SDB)



LiDAR



Learn more in the “Types of Data” section of our TID StoryMap: <https://bit.ly/478batK>

Common Formats

- Raster data (e.g. NetCDF, GeoTIFF, BAG)
- Swath-formats (e.g. *.all, *.s7k, *.gsf)
- ASCII/XYZ Files
- Shapefiles (SHP)
- And more...!

Visit us at seabed2030.org