

THE NIPPON FOUNDATION-GEBCO

SEABED
2030

PACIFIC OCEAN REGIONAL MEETING, NADI, FIJI, 12-14 SEPTEMBER
2024

Report from Seabed 2030 Pacific Ocean Regional Center 2023-24

Kevin Mackay

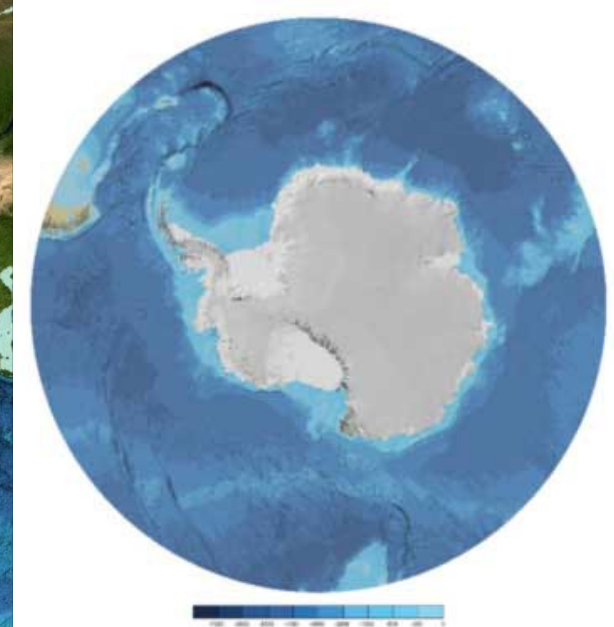
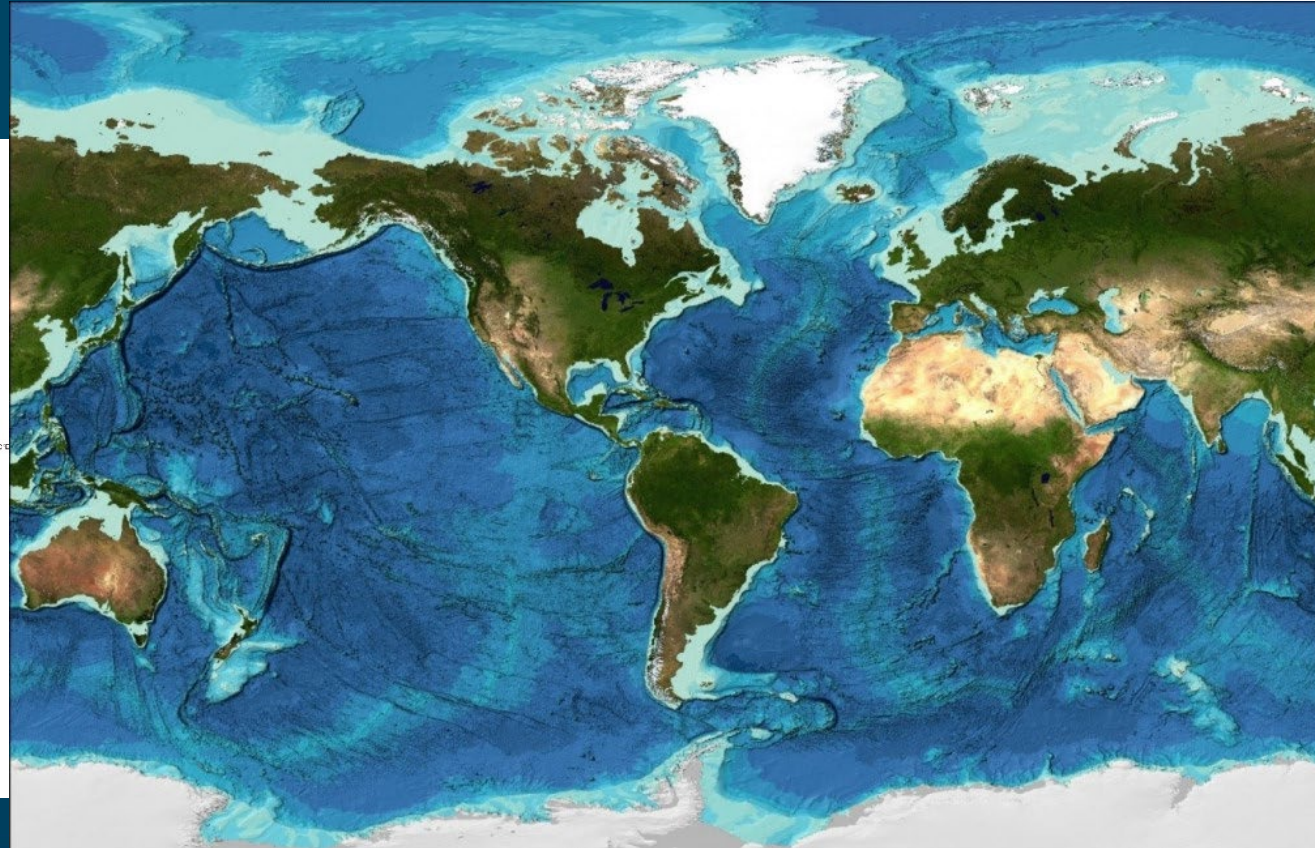
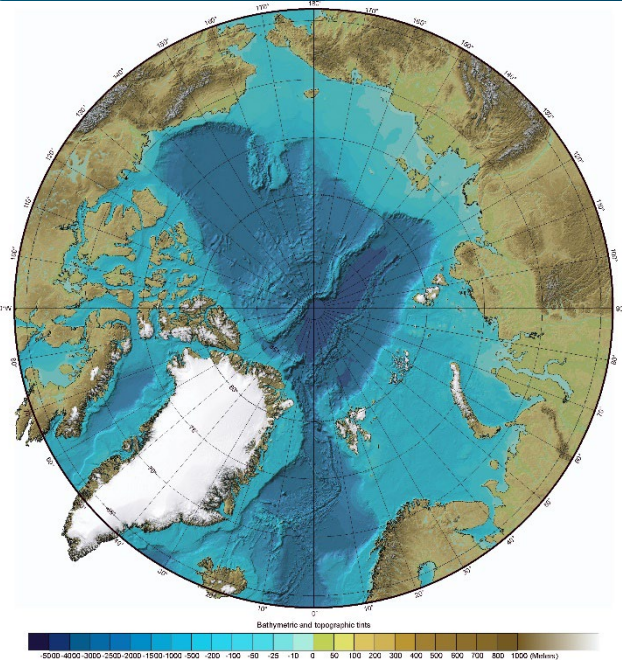
Head: Pacific Ocean Regional Center



GEBCO

THE NIPPON FOUNDATION-GEBCO

SEABED
2030



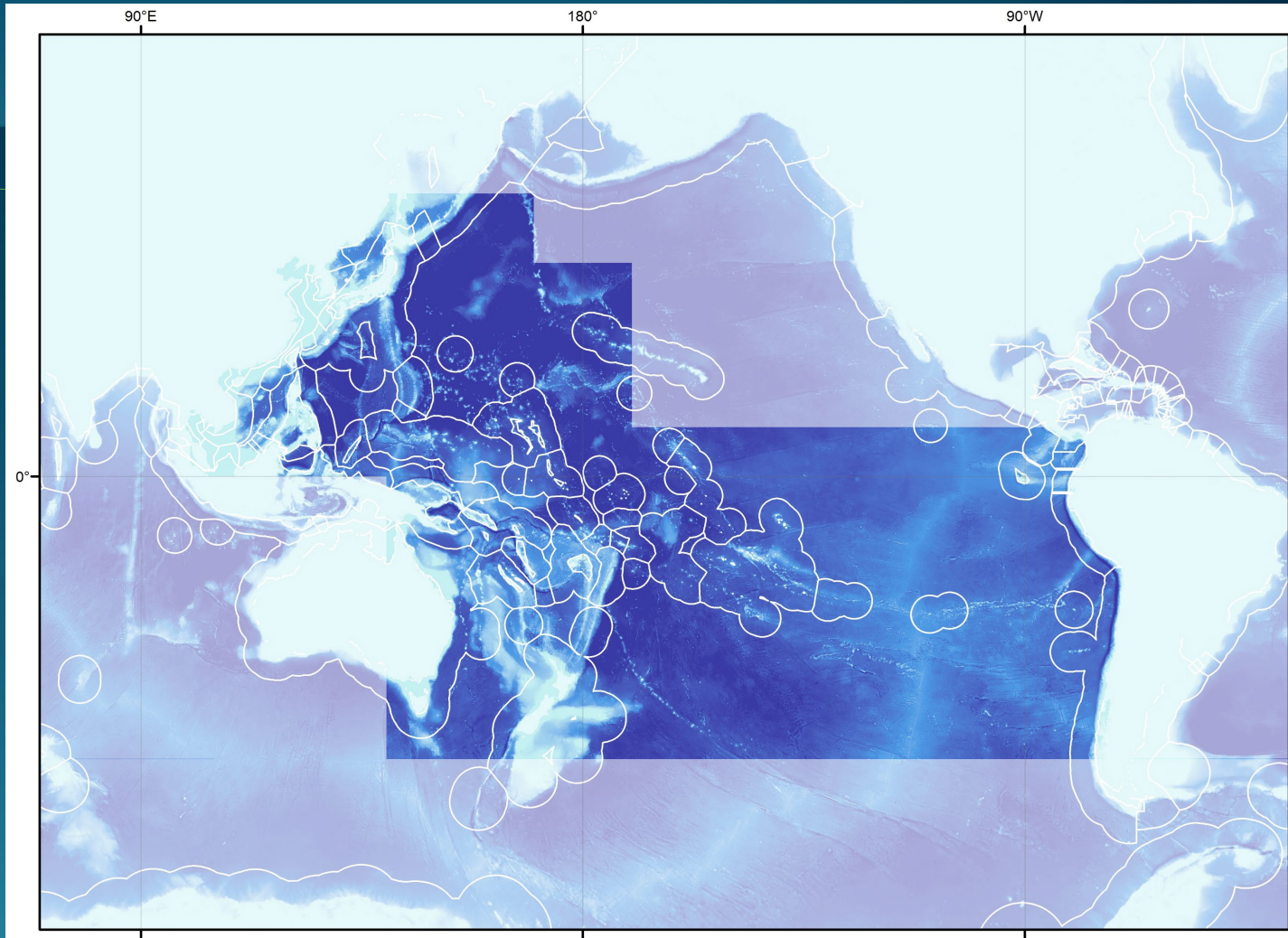
Joining forces with the Pacific Ocean mapping community



Seabed 2030: Regional Data Center

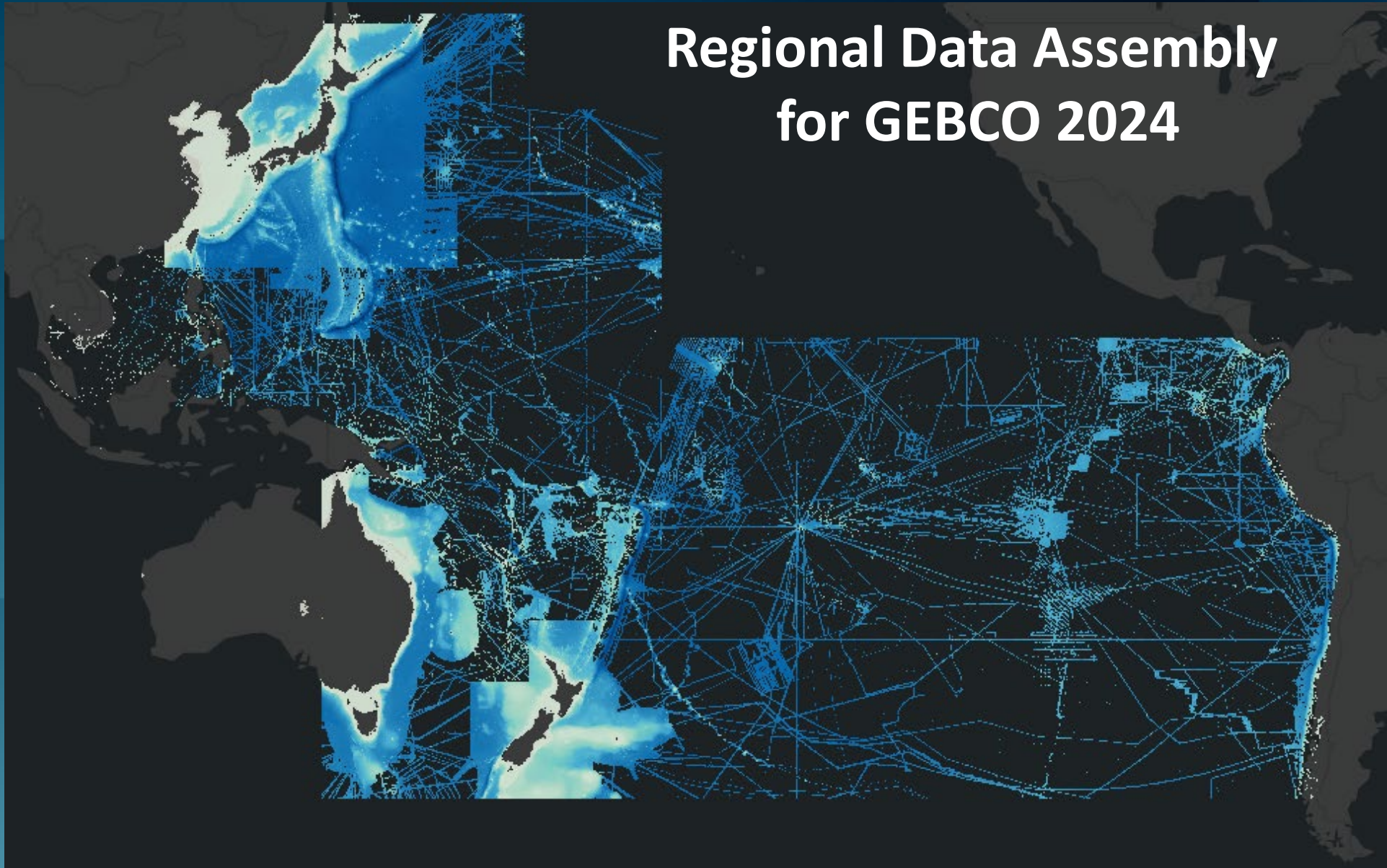


Seabed 2030 Pacific Ocean Regional Center

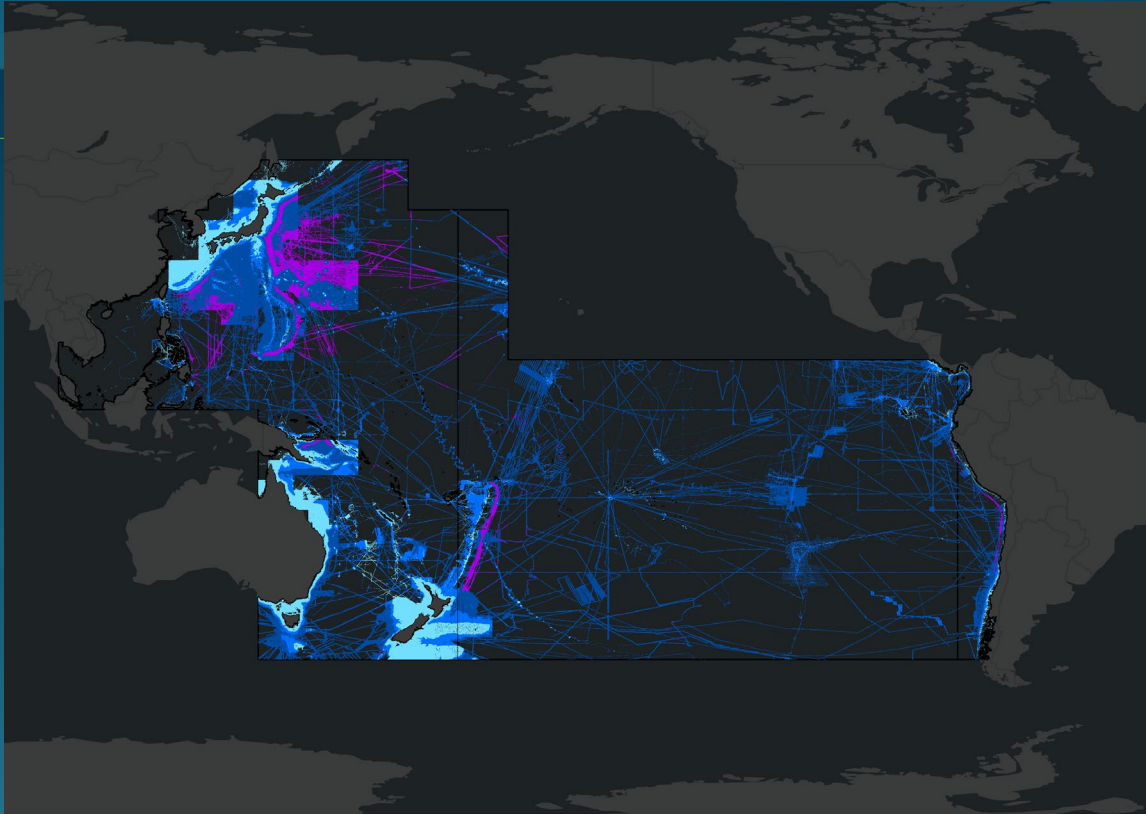


- 123,515,000 km² of ocean
- 67,000,000 km² outside national jurisdiction
- 39 countries and territories
- ~80% deeper than 3000 m
- Includes the four deepest ocean trenches:
 - Mariana Trench (~10,926 m)
 - Tonga Trench (~10,820 m)
 - Philippine Trench (~10,048 m)
 - Kermadec Trench (~10,047 m)

Regional Data Assembly for GEBCO 2024



Seabed 2030 progress 2024



- 26.2 % of the world's seafloor mapped
- 26.8 % of Pacific Center region seafloor mapped
- Equivalent of the land area of North America and Europe combined

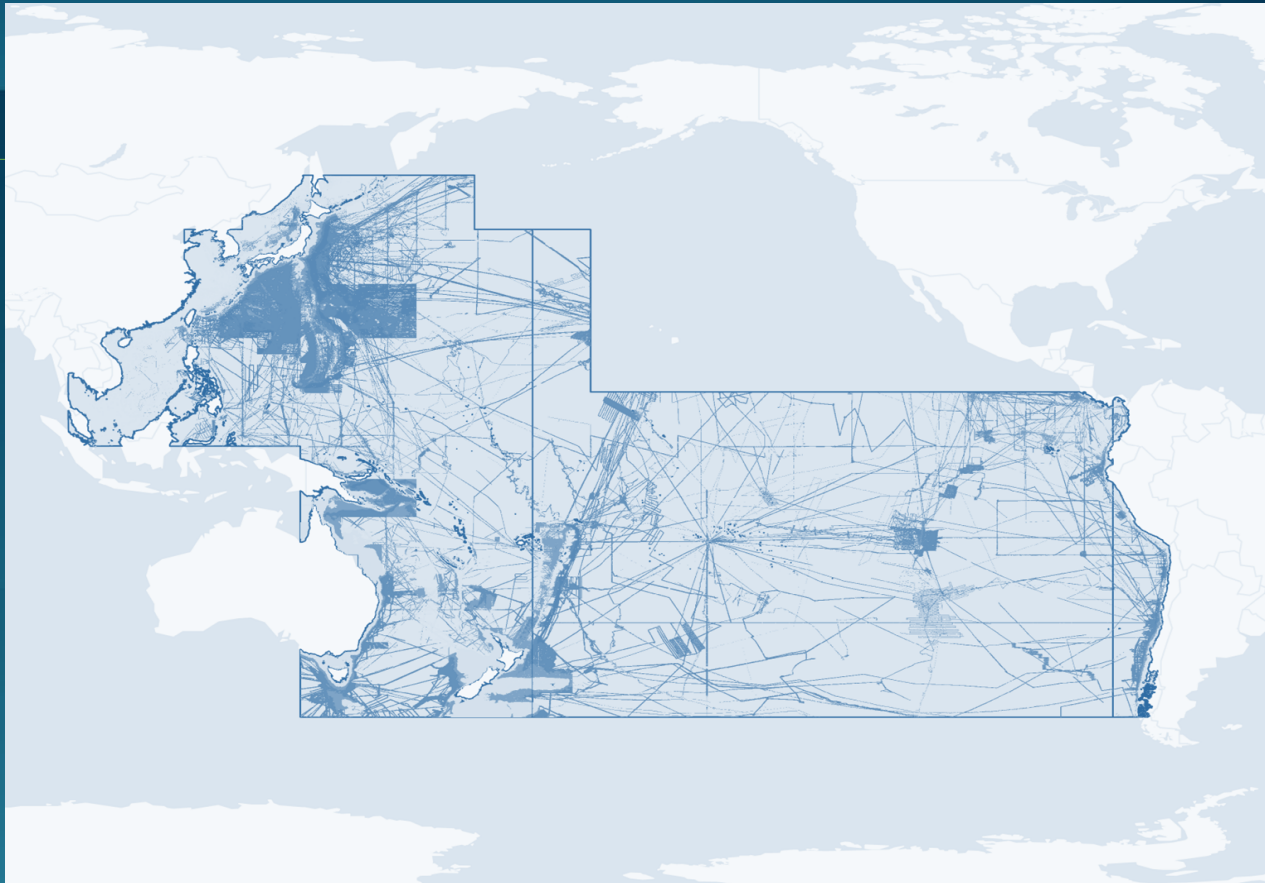
Seabed 2030 Pacific Ocean Regional Center

➤ Highlights of regional engagement activities in 2023-2024

- *First ever Seabed 2030 event in South America with the 5th Seabed 2030 Pacific Ocean Regional meeting held in Lima, Peru*
- *First ever Seabed 2030 training workshop on open bathymetry data and open tools held in Lima, Peru*
- *Participation in over 30 regional conferences and meetings*
- *Engagement with ~20 partners and stakeholders, ranging from Government entities to commercial to private individuals*

Seabed 2030 Pacific Ocean Regional Center

GEBCO 2024 grid



Major regional contributors 2022/23

- JAMSTEC
- Inkfish
- AusSeabed
- IHO DCDB
- IFREMER
- LINZ
- OGS
- KOPRI
- Geoscience Australia
- Seakeepers
- Hawke's Bay Regional Council
- AHO
- CSIRO
- LDEO
- R2R
- NIWA
- BSH
- RNZN
- SAMS

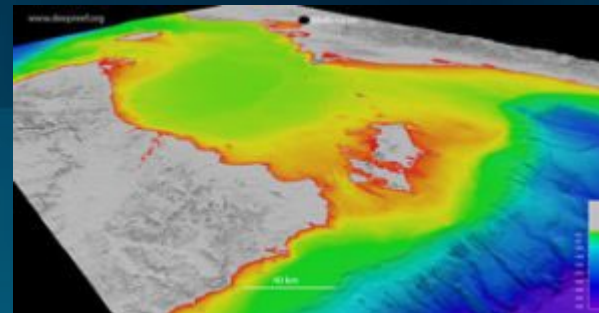
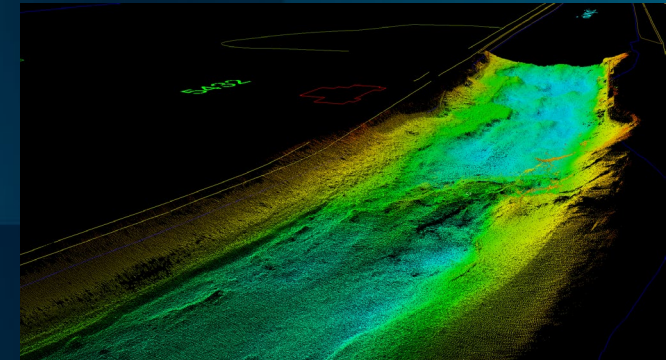
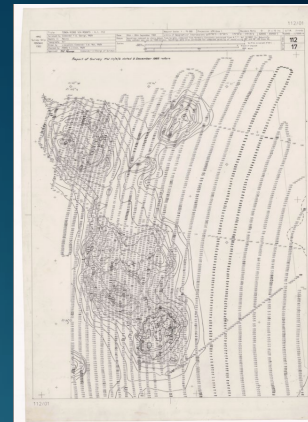
Thank you! Vinaka! Gracias! Arigatou gozaimasu! Danke! Merci!

What is meant by data?

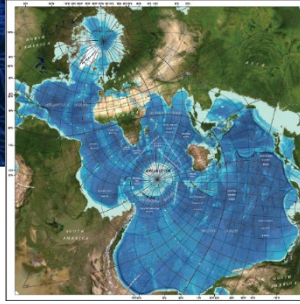
Any form of data that contains a bathymetric measurement is gratefully accepted by Seabed 2030 and GEBCO!

Examples of data are:

- Sounding sheets
- Raw data from sounders
- NMEA data (e.g. from CSB data loggers)
- Processed data (e.g. GSF or XYZ)
- S-57 ENC
- Processed grids or bathymetric surfaces
- Regional bathymetric products



NEW GEBCO STRATEGY



Vision:

To bring knowledge about our planet's seabed to everyone

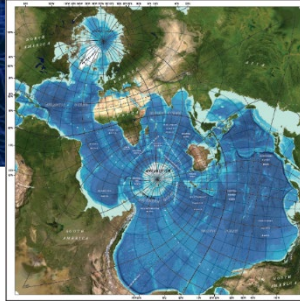
Mission:

To produce free, open and complete seabed data and information for the world's oceans.

This is achieved by enabling and inspiring seabed mapping efforts through international collaboration, technological innovation, capacity development, and education.



NEW GEBCO STRATEGY, 5 pillars



1. Delivering open and fit for purpose seabed data;
2. Supporting, promoting and using innovative solutions to continuously improve the GEBCO data value chain;
3. Establishing global infrastructure to develop capacity;
4. Engaging communities and partners to best deliver GEBCO's mission
5. Gaining support for our mission through robust processes that influence decision-making

Connect with Seabed 2030:

seabed2030.org

seabed2030.org/get_involved

E-mail us at pacific@seabed2030.org

THE NIPPON FOUNDATION-GEBCO

SEABED
2030

Seabed 2030 Pacific Ocean Regional Center

