

Seabed 2030 6th Pacific Ocean Mapping Meeting

4 – 6 Nov 2024, Nadi, Fiji

Pacific Community(SPC)



Pacific
Community

Communauté
du Pacifique

Hydrographic related activities

Salesh Kumar, Team Leader Technical Assessment Unit. GEM
Division, SPC. saleshk@spc.int

SPC's 27 Member Countries and Territories

[SPC Member Map](#)

<https://youtu.be/berQErg1h3A>



SPC's Divisions



Climate Change and
Environmental
Sustainability



Educational Quality and
Assessment



Fisheries, Aquaculture &
Marine Ecosystems



Geoscience, Energy and
Maritime



Human Rights and Social
Development



Land Resources



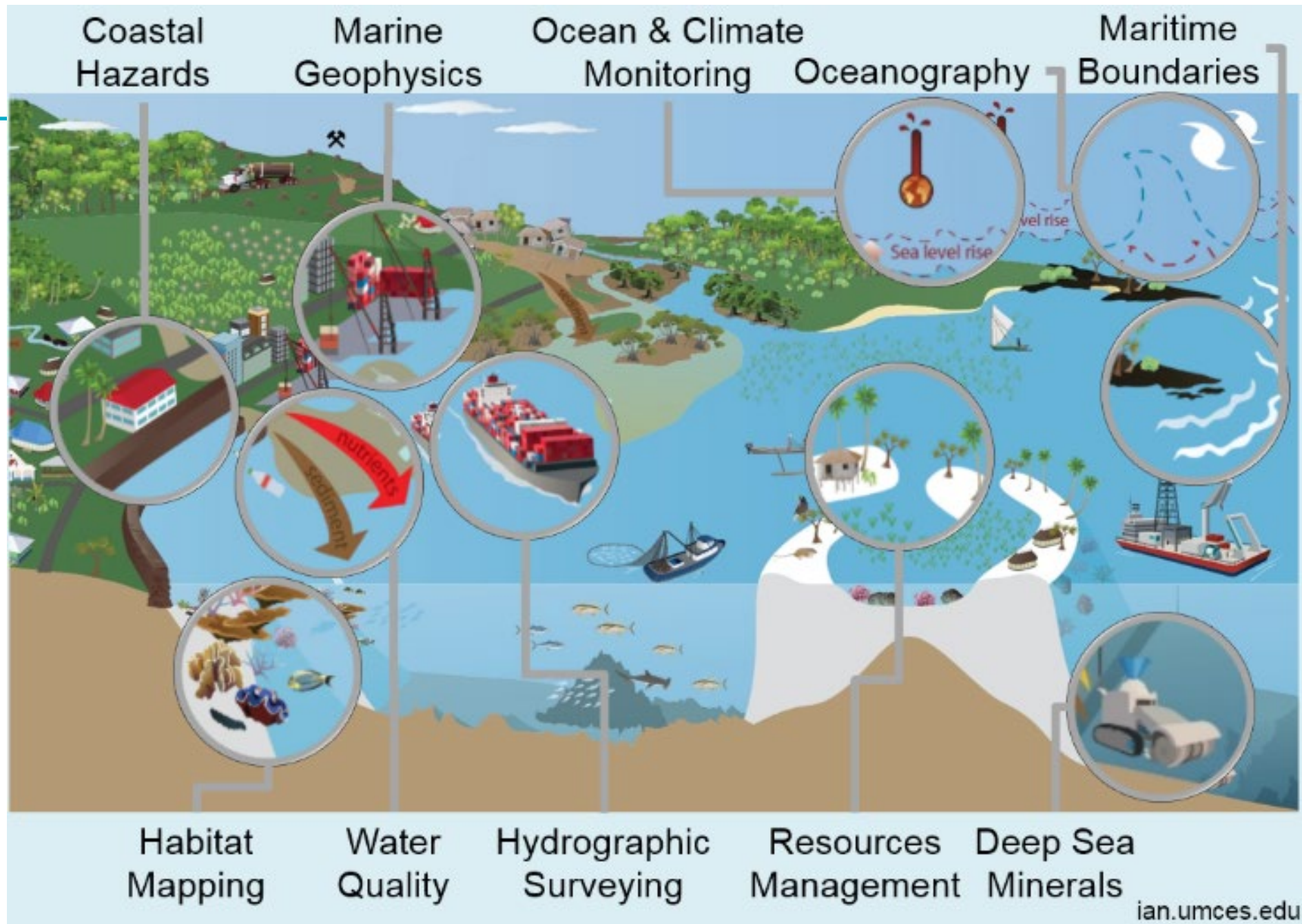
Public Health



Statistics for Development



Integrated Programmes

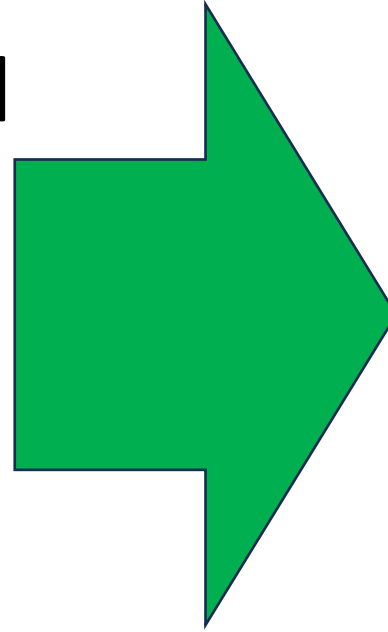


Mapping our Oceans

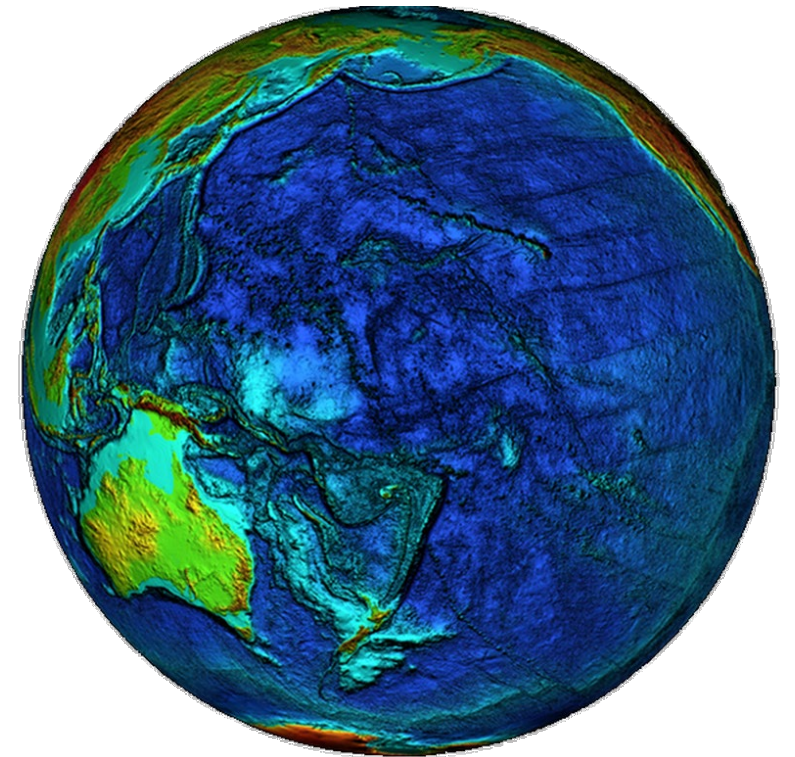
~~95%~~ percent
remains unexplored

200+ years
ship time to map

\$Billions+ cost

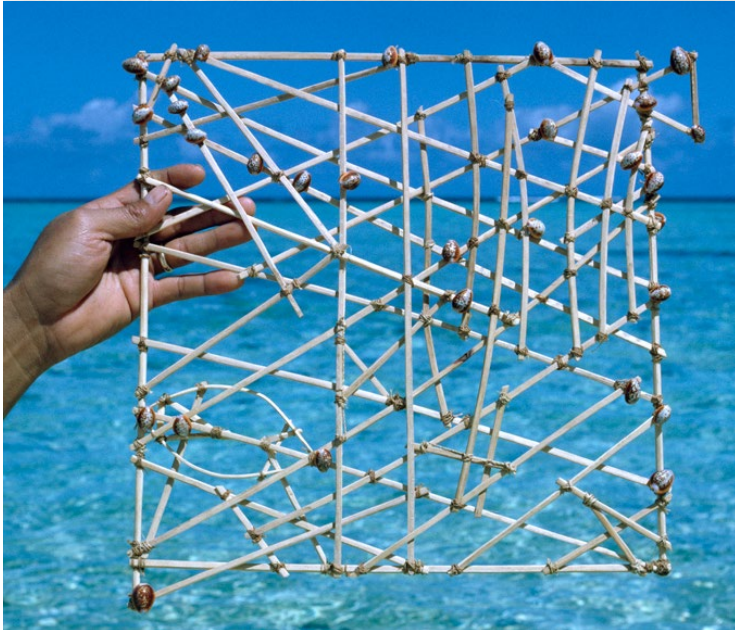
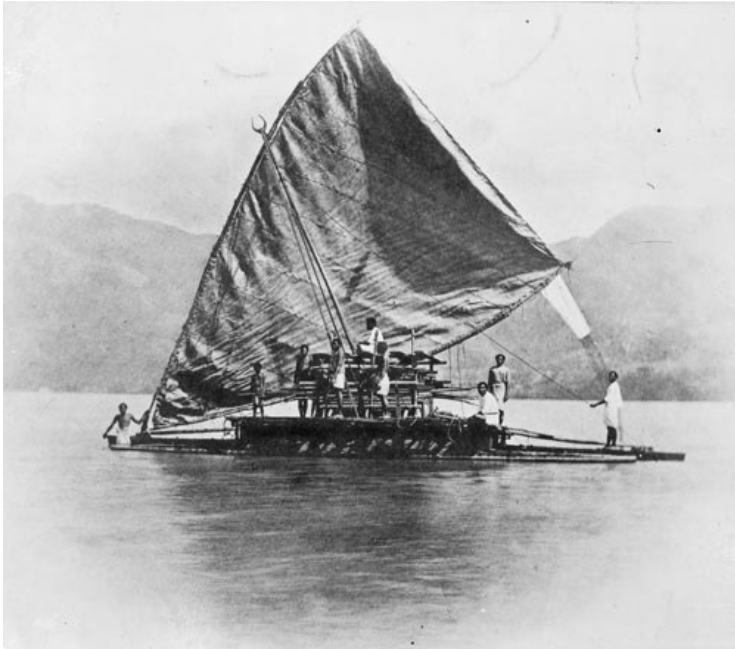


**Seabed 2030...26%
now mapped**



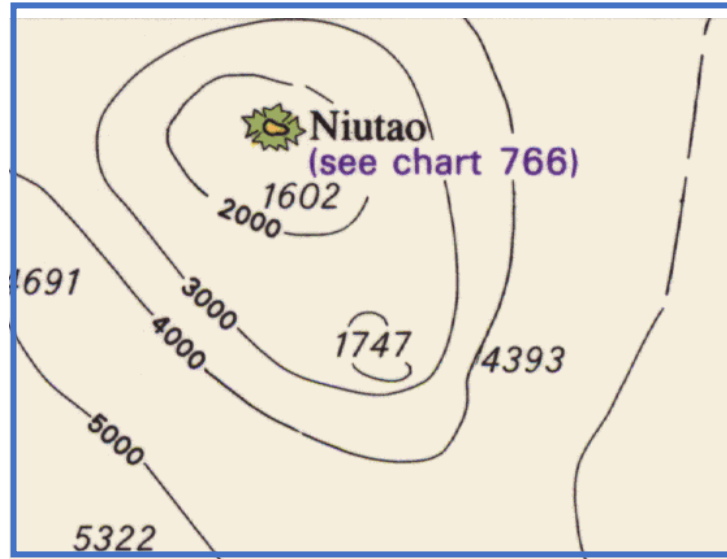
The changing face of shipping and charting

Modern maritime transport

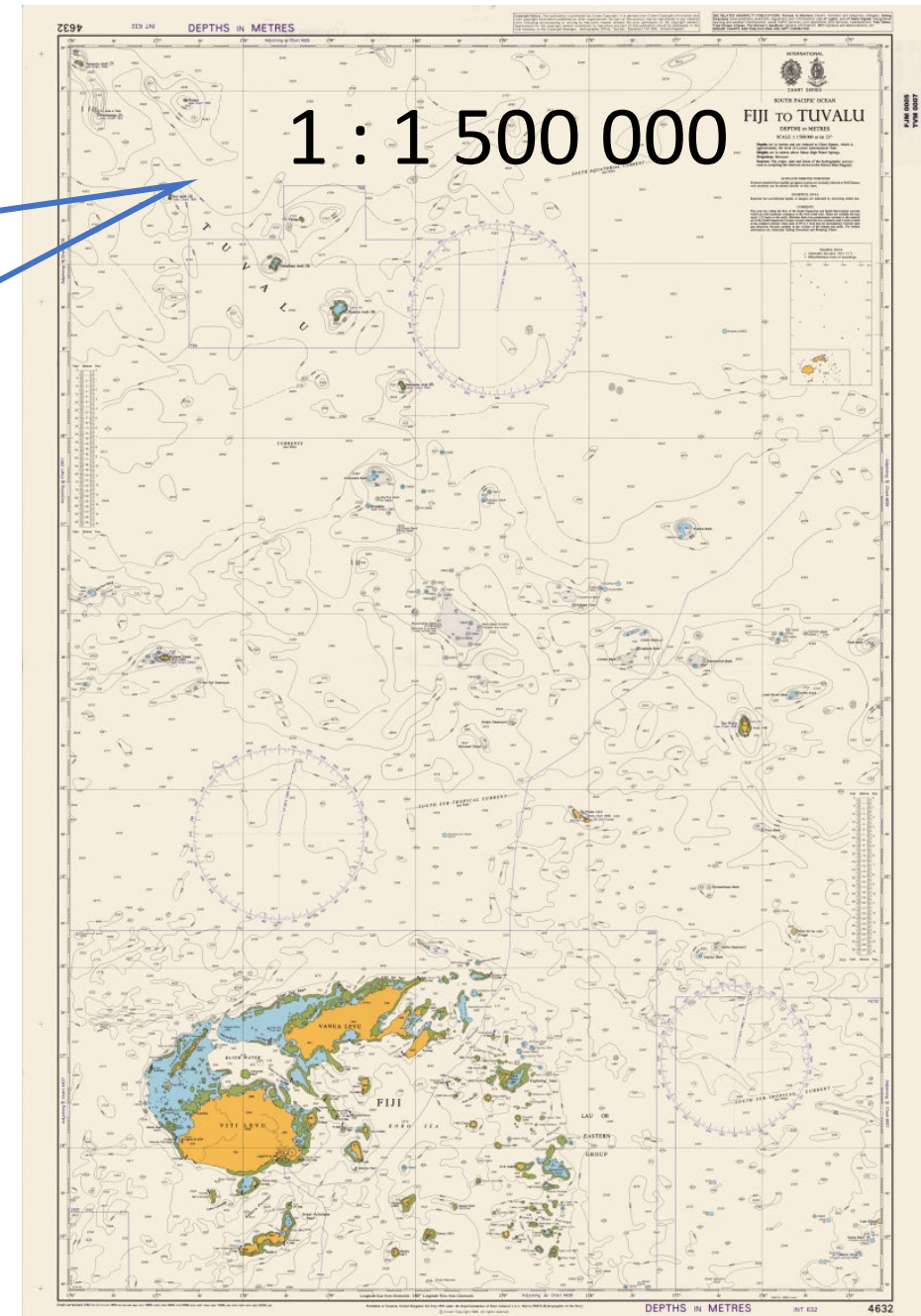
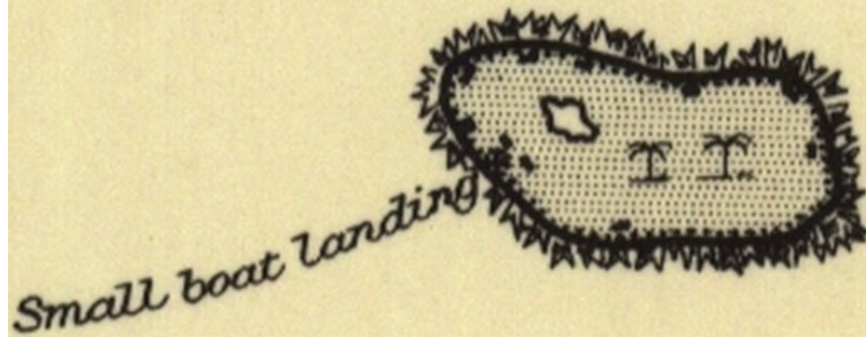


Digital navigation is now mandatory

Poor state of nautical charts

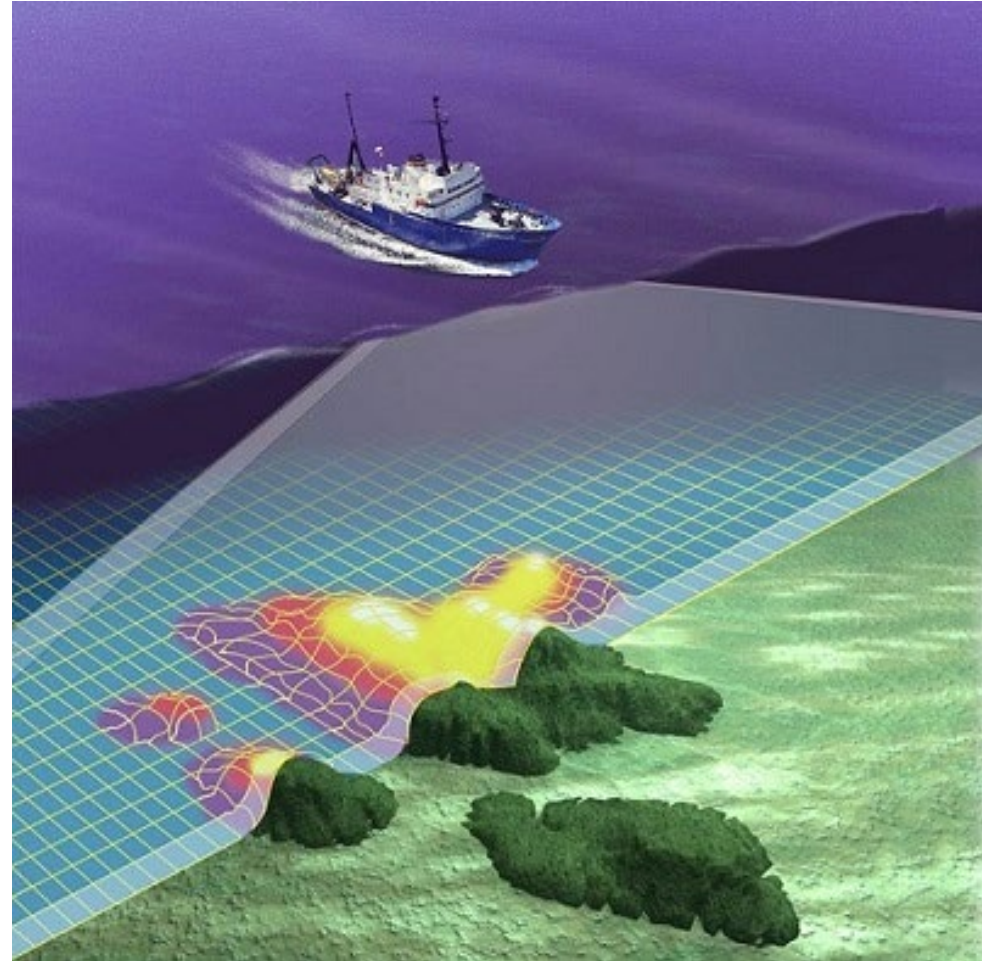


Niutao (Chart 766)



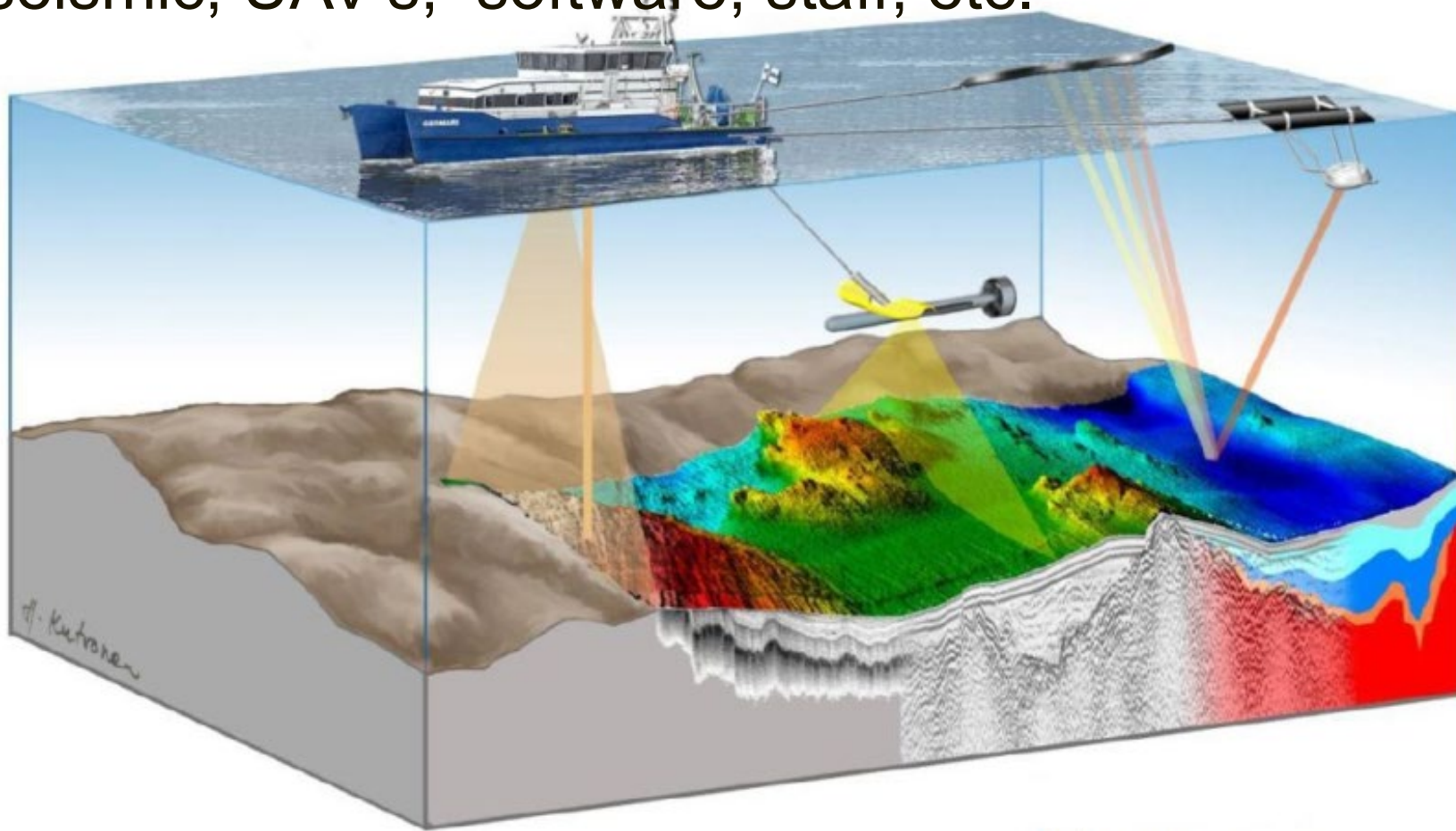
How can we map the seabed?

- Multibeam Echosounder
- Singlebeam Echosouders
- Sidescan sonars
- LiDAR Survey
- Vessel
- Expertise
- Operational resources, etc.



SPC has all the required toys (~USD 1M)

- Singlebeam and Multibeam echosounders, precision GNSS, sidescan sonar, magnetometer, boomer seismic, UAV's, software, staff, etc.



Pacific Regional Navigation Initiative

The Pacific Regional Navigation Initiative (PRNI) is a project funded by the New Zealand Ministry of Foreign Affairs and Trade (MFAT) that focuses on navigation related aspects of maritime safety, in particular those necessary to support Pacific Island Countries fulfil their obligations relating to hydrography and nautical charting under UN Safety of Life at Sea (SOLAS). The Pacific Community (SPC) has been engaged by NZ MFAT to work with targeted countries to, amongst other objectives, support hydrographic capability building initiatives in conjunction with work being doing by international bodies and development partners.

[Browse All Metadata](#)

[Browse Datasets](#)

[Browse Reports](#)

[Browse Charts](#)



Cook Islands (47)



Fiji Islands (99)



Guam (13)



Kiribati (50)



Marshall Islands (84)



Micronesia Fed. St. (98)



Nauru (29)



New Caledonia (5)



Niue (13)



Other (43)



Palau (5)



Papua New Guinea (40)



Samoa (40)



Solomon Islands (124)



Tonga (19)



Tuvalu (88)



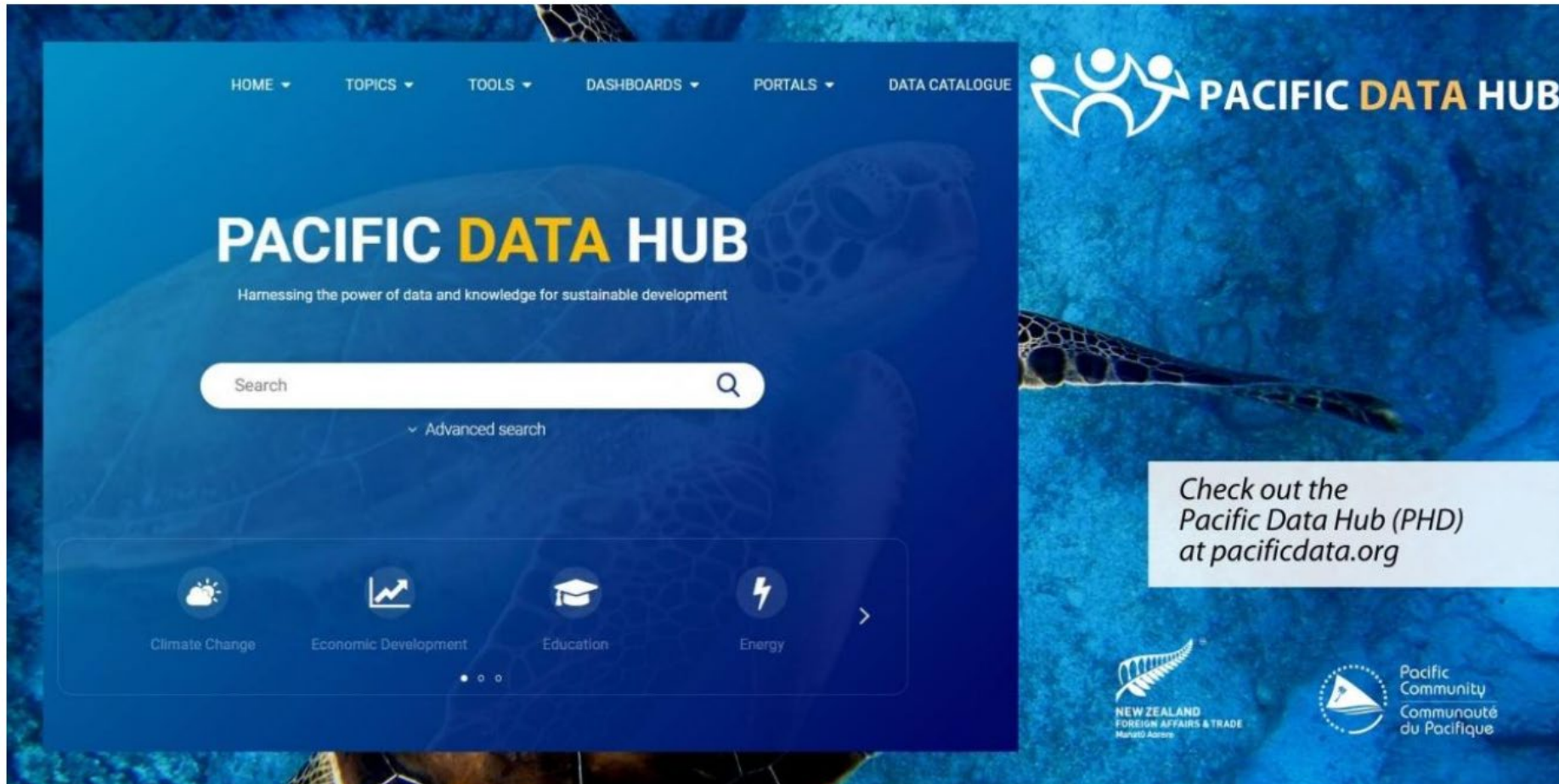
Vanuatu (48)

<http://www.pacgeo.org/prni/>

Pacific Data Hub

[Pacific Data Hub \(PDH\) | The Pacific Community \(spc.int\)](https://spc.int)

Pacific Data Hub (PDH)



The screenshot shows the Pacific Data Hub website interface. At the top, there is a navigation menu with links for HOME, TOPICS, TOOLS, DASHBOARDS, PORTALS, and DATA CATALOGUE. The main header features the Pacific Data Hub logo and the text "PACIFIC DATA HUB" in large, bold letters, with the tagline "Harnessing the power of data and knowledge for sustainable development" below it. A search bar is prominently displayed in the center, with a search icon and a dropdown arrow for "Advanced search". Below the search bar, there are four icons representing different categories: Climate Change (sun and cloud), Economic Development (line graph), Education (graduation cap), and Energy (lightning bolt). A right sidebar contains a call to action: "Check out the Pacific Data Hub (PHD) at pacificdata.org". At the bottom right, there are logos for the New Zealand Foreign Affairs & Trade Ministry and the Pacific Community.

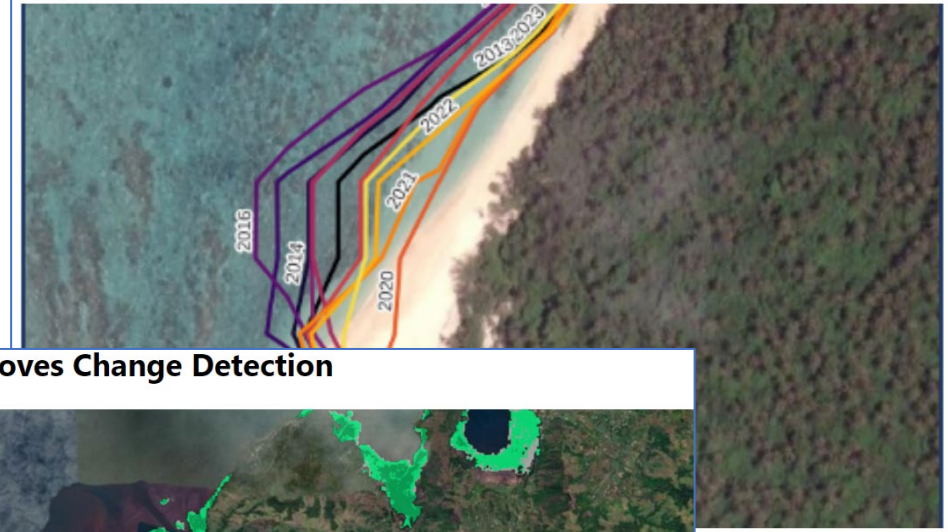


[Home | Digital Earth Pacific](#)

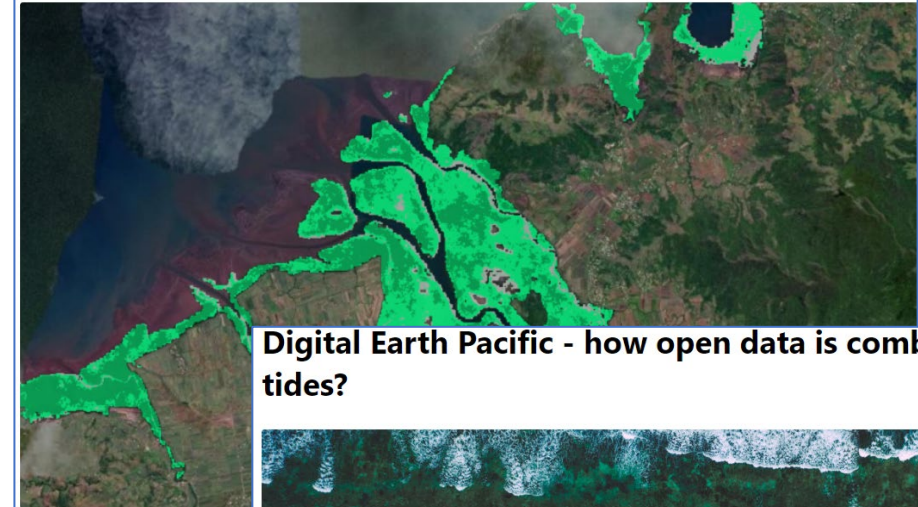
Digital Earth PACIFIC

- Members request **improved access to satellite data** for reaching development goals
- **Digital Earth Pacific provides streamlined Earth and Ocean information**, aiding Pacific decision-makers.
- Ensures Pacific nations have the digital means to frequently assess climate, food, and disaster risks with **updated decision-ready products**.

Pacific Coastlines Change



Pacific Mangroves Change Detection



Digital Earth Pacific - how open data is combatting rising tides?



Upcoming surveys..

- MBES surveys for ground truthing of the SDB as part of the Digital Earth Pacific project
- UK Government funded project ...Nauru Ports & Harbors MBES , Q1 2025



Opportunities ahead..

FAME division of SPC(Regional fisheries RV project)

- New custom-built vessel – 45m in length and 10m in breadth
- Drop keel design for EM 712 MBES (3500m)
- 6m tender for shallow water surveys (R2Sonic 2024)
- Crane for AtoN and FAD activities
- SCUBA diving capacity
- ROV capability





Thank you