



“Hydrographic Surveys in Kiribati” Country Report for Kiribati

Seabed 2030 6th Pacific Ocean Mapping Meeting

4-6 November 2024

Tanoa International Hotel, Nadi

Presented by Miss Tebetiraoi Inatoa



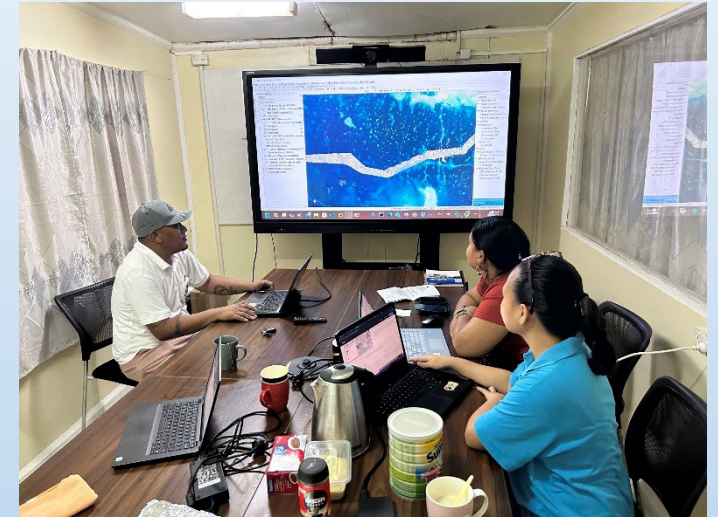
Introduction



Marine Division of the Ministry of Information, Communication and Transport is the entity responsible for ensuring maritime safety in Kiribati.

Hydrographic unit is one of the units under the Marine Division for ocean mapping. Hydrographic unit team will conduct surveys to obtain data that can help to ensure safe navigation of ships and boats.

Hydrographic unit has recruited 3 new staff (1 Spatial Data analyst & 2 Surveyor Technicians).



Current Status of Hydrographic in Kiribati



Islands	MBES data collection	MBES data cleaning and processing	Lidar data collection	Lidar data cleaning and processing
Nonouti	Completed	Completed	Completed	85%
Abaiang	Completed	Completed	Completed	*100%
Beru	Completed	Completed	Completed	100%
Tabiteuea	Completed	Completed	Completed	Completed by Jan 31 st .



Cat- B Hydrographic Survey Training

- 8 weeks of Theory
- 9 weeks of hands on training:
 - Planning
 - Acquisition
 - Cleaning and Processing Data
 - Final Report

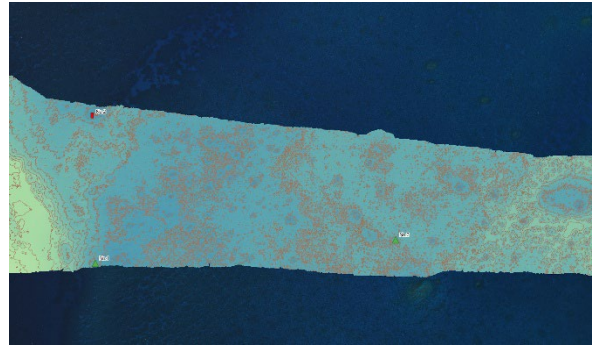
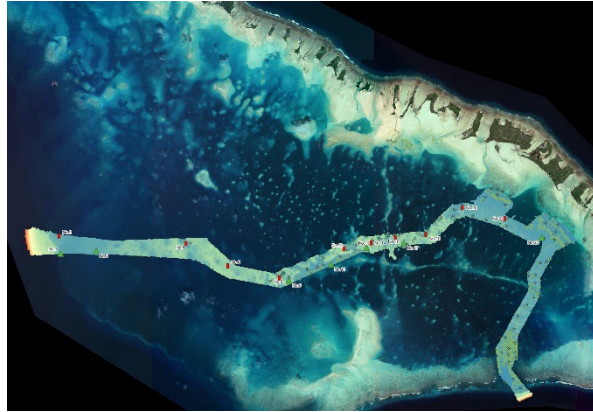


Hydrographic Survey Training



- S-5B course (Hydrographic Survey) - funded by IIC through contract agreement.
- S-8B course (Cartography) - funded by Australian Hydrographic Office

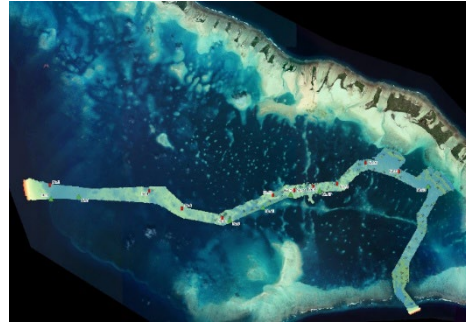
Value of Hydrographic Survey in Kiribati



- Nonouti MBES Survey data and results
- Site selection for AtoNs(Aids to Navigation)
- A survey conducted on the 4 islands (Nonouti, Beru, Tab South, Abaiang)
- The Hydrographic Unit Team from Marine Division have planned activities to map other islands in Kiribati.

shapeid	Name	descriptio	Lon	Lat	Type	Colour	TopMark	Depth
0	No.1	Starboard Lateral Mark	174.8391	-1.4874	Buoy	Green	Triangle	-8.606
1	No.2	Port Lateral Mark	174.8390	-1.4804	Buoy	Red	Rectangle	-5.551
2	No.3	Starboard Lateral Mark	174.8532	-1.4863	Beacon	Green	Triangle	-7.416
3	No.6	Port Lateral Mark	174.9059	-1.4923	Beacon	Red	Rectangle	-1.835
4	No.8	Port Lateral Mark	174.9263	-1.4971	Beacon	Red	Rectangle	-0.586
5	No.9	Starboard Lateral Mark	174.9297	-1.4981	Beacon	Green	Triangle	-0.961

Activities & Highlights of the Year



- Hydrographic survey in outer islands.
- Hydrographic Governance and Introduction to Hydrographic (UKHO)
- Hydrographic survey within and outside Kiribati EEZ (INKFISH)
- GIS Training with UNDP
- GIS Training with SPREP
- In the progress of developing the Marine Spatial Data Infrastructure (MSDI)
- Implementing Crowdsourced Bathymetry (CSB)
- **Kiribati is now the 100th member state of the IHO.**



Challenges

- No survey equipment & software
- Experience and skills are still developing

Ways Forward

- Procurement of survey equipment & software
- More hands- on training

Acknowledgements!
Kam Bati n rabwa