

**OCEAN**  
**EXPLORATION**

## Illuminating the Pacific:

*Beyond the Blue Campaign*

Rachel Medley, NOAA Ocean Exploration

# NOAA-Seabed 2030 MOU

- Codified in 2022 - signatories from NOAA Ocean Exploration, NOAA's Office of Coast Survey, and NOAA National Centers for Environmental Information
- Momentum behind Seabed 2030 campaign helped to establish the National Ocean Mapping Exploration and Characterization (**NOMECC**) bringing together 15 U.S. federal agencies
  - Transcends mapping but builds upon the foundations of modern bathymetric coverage through coordination of multidisciplinary interests, technologies, and sectors
  - Support regional campaigns and data sharing FAIR principles

THE NIPPON FOUNDATION-GEBCO

SEABED  
2030

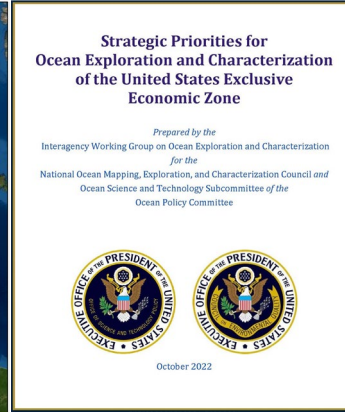
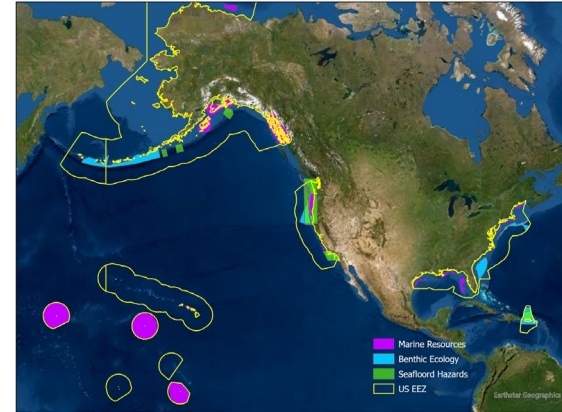


UNITED WE  
DISCOVER

# National Ocean Mapping, Exploration & Characterization (NOMECS)

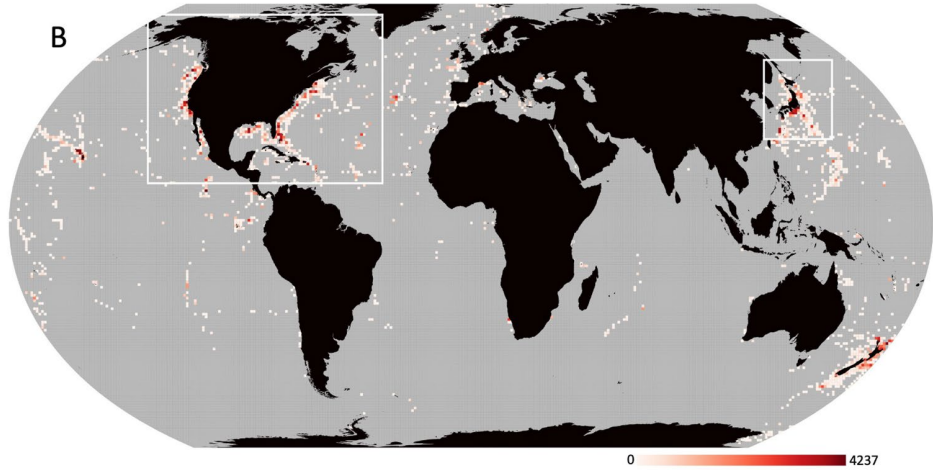
## Strategic Priorities Report

- 2022: Strategic Priorities for Ocean Exploration and Characterization of the U.S. EEZ
- 92 federal subject matter experts, 15 agencies, 5 subgroups:
  - Benthic ecology
  - Cultural heritage
  - Marine resources
  - Seafloor hazards
  - Water column
- External feedback from Federal Register Notice
- Guides budget formulations, environmental studies



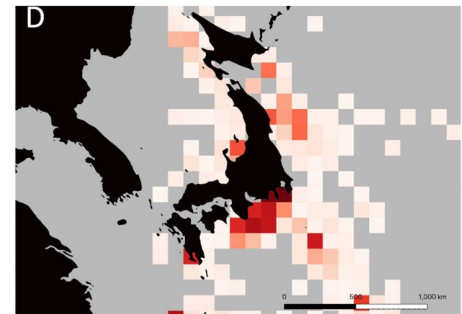
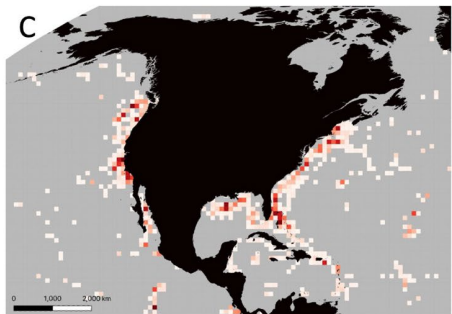
	Benthic Ecology	Cultural Heritage	Marine Resources	Seafloor Hazards	Water Column
Aleutian Arc	X	X	X	X	X
Cascadia Subduction Zone	X	X		X	
Hawaiian Islands		X	X		X
Other Pacific Islands		X	X		X
Caribbean	X	X		X	X
California Coastal Region		X	X	X	X
Gulf of Mexico		X	X		X
Blake Plateau	X	X			
Northeastern U.S. & Seamounts	X	X	X		

# Global Exploration and Characterization Gaps



**We still have a long way to go ....**

Global records of HOV, ROV, AUV, and towed imaging vehicle deployments from SOI, MBARI, NOAA, HURL, OET, SOI, GEOMAR, JAMSTEC, HBOI, IFREMER, and cruise locations from the Russian Academy of Sciences MIR 1 and 2 expeditions, scaled to number of dives per 100 x 100 km grid. *Grey cells denote areas with no dive records.*



**(B and C)** Zoomed in subset highlighting the high number of dives around North America and Japan respectively. These are the areas with the highest amount of data collection, and yet there are still gaps.

# *Beyond the Blue Campaign Objectives*



Close bathymetry  
gaps



Locate and characterize  
diverse ecosystems



Support effective  
management of  
marine resources



Support capacity  
development and  
science diplomacy



Engage broad  
audiences



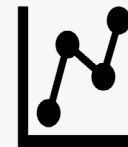
Increase understanding of  
maritime cultural  
heritage



Support innovative  
technology development



Collect and archive high-  
quality data and samples



Enhance modeling and  
prediction capabilities

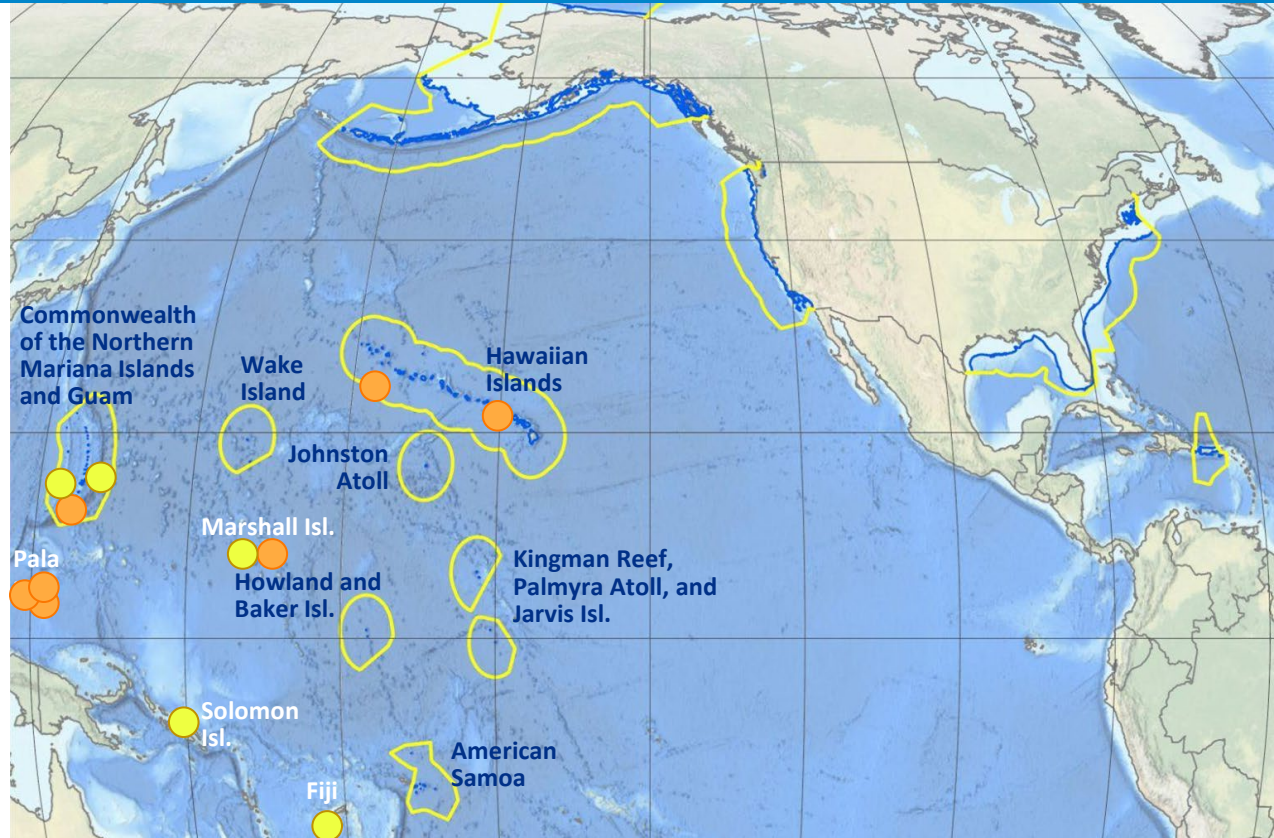
# Planned 2025 Assets supporting Beyond the Blue

## ● NOAA Ship *Okeanos Explorer*

- Hawaiian Islands
- Marshall Islands
- Palau
- Guam

## ● Exploration Vessel *Nautilus*

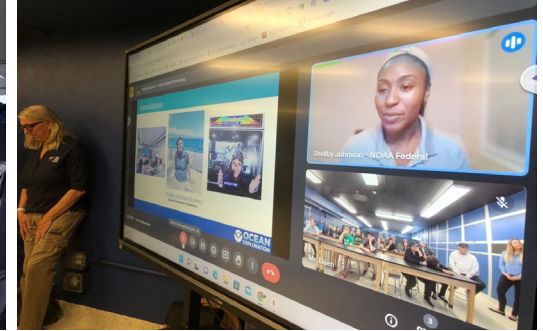
- Guam
- Commonwealth of the Northern Mariana Islands
- Marshall Islands
- Solomon Islands
- Fiji



# Beyond the Blue - Outreach and Engagement

## Common Activities:

- Ship tours
- Tabling and exhibits
- Targeted talks/presentations
- Port events
- Targeted community events
- Partner meetings/workshops
- Live interactions
- Webinars for the public





**OCEAN**  
EXPLORATION




**NAUTILUS LIVE**  
OCEAN EXPLORATION TRUST







**OCEAN**  
EXPLORATION

## Explore with us:

 [oceanexplorer.noaa.gov](https://oceanexplorer.noaa.gov)

 [@oceanexplorationresearch](https://www.facebook.com/oceanexplorationresearch)

 [@noaa\\_oceanexploration](https://www.instagram.com/noaa_oceanexploration)

 [@oceanexplorer](https://twitter.com/oceanexplorer)

 [@oceanexplorergov](https://www.youtube.com/oceanexplorergov)

 [@noaa-ocean-exploration](https://www.linkedin.com/company/noaa-ocean-exploration)

## Beyond the Blue

